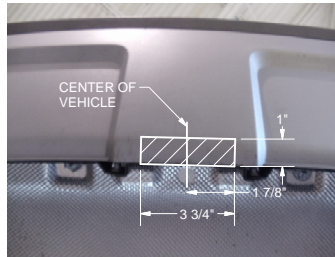
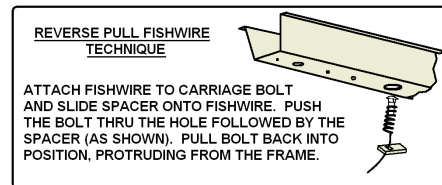
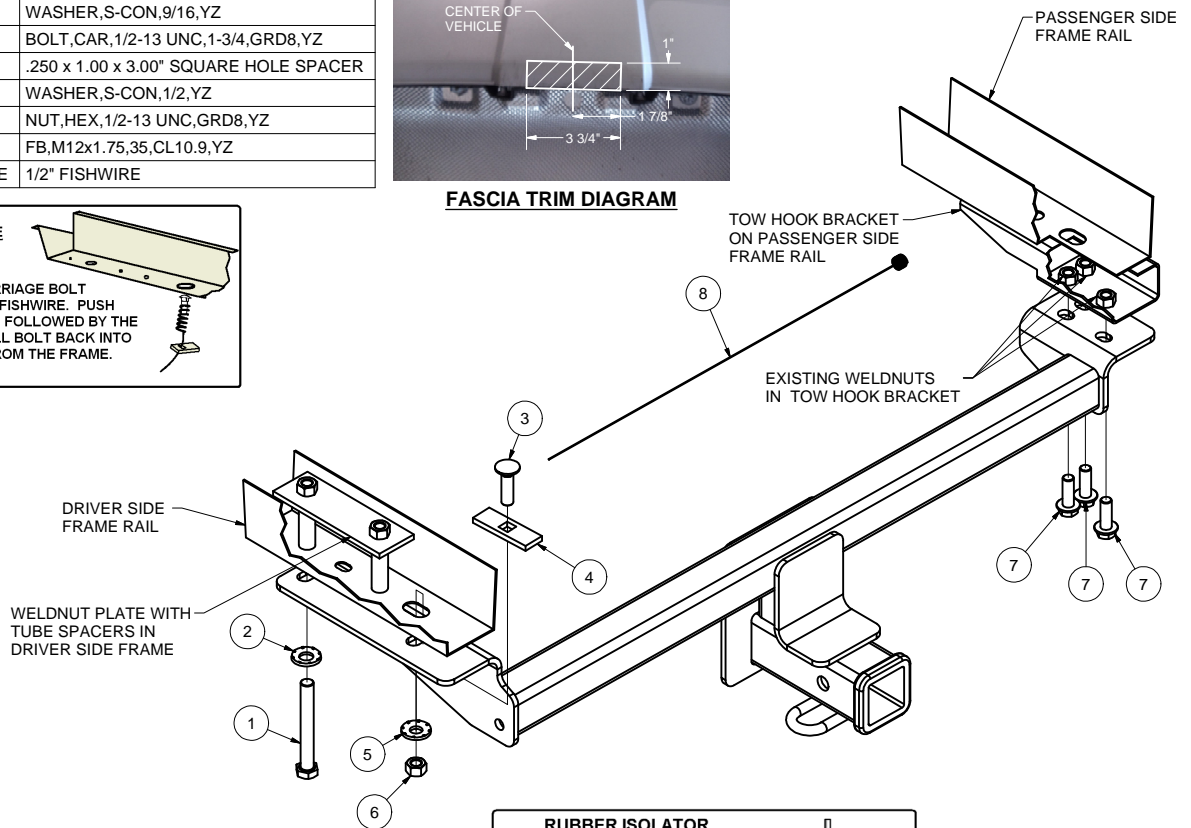


**13128****LAND ROVER RANGE ROVER EVOQUE****8/13/2020****GROSS LOAD CAPACITY WHEN USED AS A WEIGHT CARRYING HITCH: 4,000 LBS. TRAILER WEIGHT & 600 LBS. TONGUE WEIGHT.****\*\*\*DO NOT EXCEED VEHICLE MANUFACTURER'S RECOMMENDED TOWING CAPACITY.\*\*\*****WARNING: ALL NON-TRAILER LOADS APPLIED TO THIS PRODUCT MUST BE SUPPORTED BY 18050 STABILIZING STRAPS.****\*\* FAILURE TO PROPERLY SUPPORT NON-TRAILER LOADS WILL VOID PRODUCT WARRANTY\*\*****HAVING INSTALLATION QUESTIONS? CALL TECHNICAL SUPPORT AT 1-877-287-8634**

Parts List			
ITEM	QTY	PART NUMBER	DESCRIPTION
1	1	10-10515	HHCS,M14x2,110,CL10.9,YZ
2	1	30-00164	WASHER,S-CON,9/16,YZ
3	1	10-10272	BOLT,CAR,1/2-13 UNC,1-3/4,GRD8,YZ
4	1	CM-SP6	.250 x 1.00 x 3.00" SQUARE HOLE SPACER
5	1	30-00149	WASHER,S-CON,1/2,YZ
6	1	20-00171	NUT,HEX,1/2-13 UNC,GRD8,YZ
7	3	10-10516	FB,M12x1.75,35,CL10.9,YZ
8	1	1_2 FISHWIRE	1/2" FISHWIRE

**FASCIA TRIM DIAGRAM****REVERSE PULL FISHWIRE TECHNIQUE**

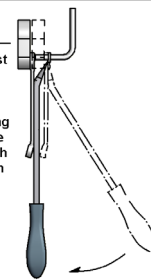
ATTACH FISHWIRE TO CARRIAGE BOLT AND SLIDE SPACER ONTO FISHWIRE. PUSH THE BOLT THRU THE HOLE FOLLOWED BY THE SPACER (AS SHOWN). PULL BOLT BACK INTO POSITION, PROTRUDING FROM THE FRAME.

**RUBBER ISOLATOR REMOVAL DIAGRAM**

This technique can be used if an Exhaust Hanger Removal Pliers is not available.

Using a 5/8" open end wrench, slide the wrench up to the rubber isolator, cradling the hanger rod as shown. Next place the flat edge of a pry bar between the wrench and the hanger stop or hanger rod. Then simply rotate the pry bar toward the wrench to remove the rubber isolator.

Note: Using a spray lubricant or soapy water on the hanger rod and the rubber isolator helps removal.



**FRONT**  
**REAR**

HITCH WEIGHT: 30 LBS.

**INSTALL TIME**

PROFESSIONAL: 30 MINUTES

NOVICE (DIY): 65 MINUTES

**INSTALL NOTES:**

- NO DRILLING REQUIRED
- REVERSE FISHWIRE HARDWARE
- LOWER EXHAUST
- REMOVE OR TRIM HEAT SHIELD
- FASCIA TRIMMING REQUIRED

**TOOLS REQUIRED**

TORQUE WRENCH

RATCHET

PRY BAR

TAPE MEASURE

CUT OFF WHEEL

TIN SNIPS

10mm, 15mm, 22mm SOCKETS

3/4" SOCKET

T-30 TORX BIT

**INSTALLATION STEPS**

1. Lower exhaust by removing bolt which attaches exhaust hanger bracket on passenger side frame rail, then disconnecting 2 rubber isolators. Support exhaust to prevent it from being damaged.
2. Remove rear heat shield at vehicle fascia by removing 4 hex bolts and 8 Torx bolts. Heat shield may either be trimmed and reinstalled or permanently removed.
3. Reverse fishwire 1/2" carriage bolt and spacer up through slot in driver side frame rail and back down through slot.
4. Trim fascia as shown, approximately 3 3/4" long X 1" wide (See Fascia Trim Diagram).
5. Raise hitch into position, being careful not to push 1/2" carriage bolt back into frame.
6. Install remaining fasteners as shown. Torque all 1/2" fasteners to 110 ft-lbs, torque all M12 fasteners to 79 ft-lbs, torque all M14 fasteners to 126 ft-lbs.
7. Raise exhaust back into position.

**PERIODICALLY CHECK THIS RECEIVER HITCH TO ENSURE THAT ALL FASTENERS ARE TIGHT AND THAT ALL STRUCTURAL COMPONENTS ARE SOUND.**

Curt Manufacturing LLC., warrants this product to be free of defects in material and/or workmanship at the time of retail purchase by the original purchaser. If the product is found to be defective, Curt Manufacturing LLC., may repair or replace the product, at their option, when the product is returned, prepaid, with proof of purchase. Alteration to, misuse of, or improper installation of this product voids the warranty. Curt Manufacturing LLC.'s liability is limited to repair or replacement of products found to be defective, and specifically excludes liability for incidental or consequential loss or damage.





