



INSTALL INSTRUCTIONS

STEALTH FRONT BUMPER

Product Range : 215RXX

Application : 2015 + GMC 2500,3500

(THIS APPLIES TO ALL STEALTH SERIES FRONT BUMPERS)

⚠ WARNING

Read the instructions completely before beginning installation. Before tightening bolts, drilling or cutting where required, check to make sure there are no obstructions such as brake, fuel or electrical lines which may be damaged. Also keep in mind this is an after-market product and MAY require minor shimming and/or trimming, reaming, etc. for proper fit. Road Armor is not responsible for any damages to vehicle.

ⓘ IMPORTANT NOTICE

- Be sure to inspect and test fit your product to ensure proper fitment before having it coated, painted, bed lined, etc.
- Road Armor will not be responsible for the cost of coating your unit if any problems with fit or finish are not noted and addressed beforehand.

SAFETY FIRST!

- FOLLOW ALL INSTRUCTIONS, YOUR SAFETY AND THE SAFETY OF OTHERS IS MOST IMPORTANT.
- WEAR APPROPRIATE EYE PROTECTION AND EXERCISE CAUTION WHEN DRILLING / CUTTING

REQUIRED TOOLS

SAE & Metric Sockets and Wrenches

Black Spray Paint

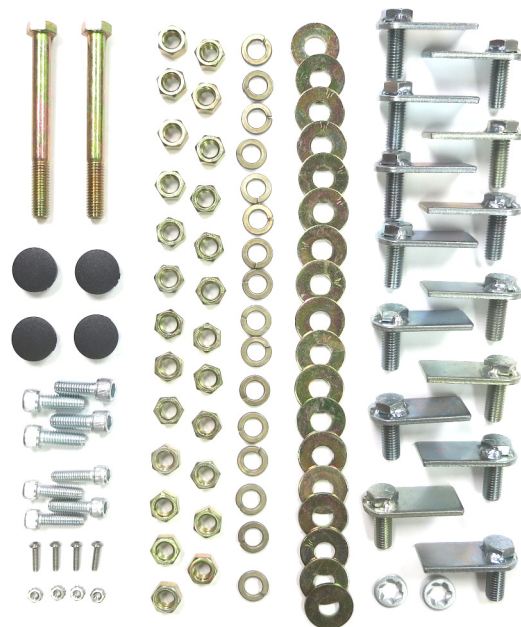
Drill and 1/2 – 9/16 or Step bit

Tape Measure

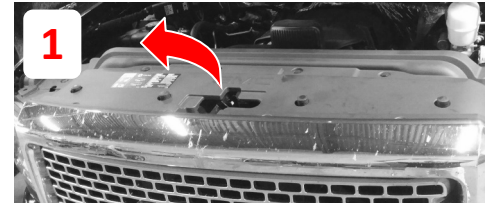
Allen wrenches

INCLUDED HARDWARE

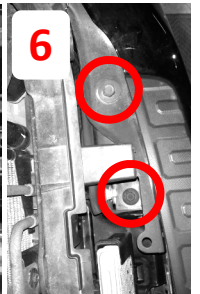
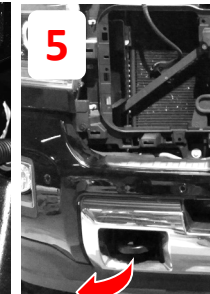
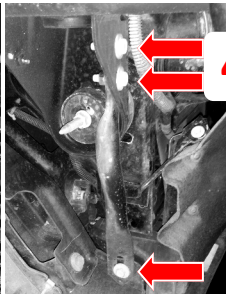
- 4 7/16"-14 x 1-1/4" Steel Socket Cap Screw
- 4 3/8"-16 x 1-1/4 Steel Socket Cap Screw
- 4 #10-24 x 3/4" Stainless Steel Button Socket Cap Screw
- 4 #10-24 External Tooth Lockwasher K-Lock Nut
- 25 1/2"-13 Grade 8 Hex Nut
- 16 1/2" Split Lock Washer
- 18 1/2" Flat Washer
- 2 1/2"-13 x 5" Grade 8 Hex Cap Screw
- 14 1.5" SINGLE BOLT TAB (ZINC)
- 4 1.093 Dome Plug
- 2 1/2" Bolt 15/16" O.D. Zinc Pushnut Bolt Retainer



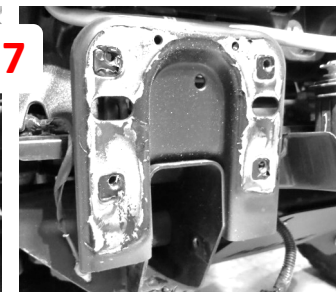
- 1 Open hood and remove dust cover above grill
- 2 Remove four bolts along top of grill
- 3 Pulling from the bottom, pop away the grill slowly
- 4 Remove bumper stiffeners both sides and unplug harness



- 5 Remove tow hooks both sides
- 6 Remove bumper bolts 4 total and pull off bumper
- 7 Remove OEM bumper brackets and paint the raw metal revealed



- 8 You can now reinstall the grill and dust cover
- 9 Bolt on the brackets using bolt tabs starting with the inside bottom bolt. Do not tighten yet.
- 10 Add bolt tabs to bumper and apply keeper washers using a deep socket as shown
- 11 Using a lift table or a friend, line up the bumper with the brackets.
- 12 Once the bolts are through the bracket slots install a washer / lock washer and nut
- 13 Check in/out adjustments and begin to tighten down the brackets
- 14 Make side to side and up/down adjustments to your liking and finish tightening all bracket bolts



- 15 Remove the bumper now that the brackets are tight to secure the bracket on its slots.

- 16 Measure 2 ¼ inches up from the lower bracket hole as shown and drill a 1/2" to 9/16" hole through bracket and frame, then use factory tow hook bolt and nut to lock the bracket in place. This step is required or the warranty is void.

- 17 Now is the time to install lights, winch, sensors (if equipped) and other accessories

- 18 Fit up the now accessorized Road Armor bumper and tighten down fully.

