



Installation Manual
2021 Ford Bronco
2" Suspension Lift Kit
Part # 22500

zs04262022

Part # 22500
2021 Ford Bronco
2" Suspension Lift kit

<i>Part #</i>	<i>Description</i>	<i>Qty.</i>
22500-01	BRONCO STRUT SPACER	4
38FLN	3/8" FLANGE NUT	12

Congratulations on your selection to purchase a Tuff Country EZ-Ride Suspension System. We at Tuff Country EZ-Ride Suspension are proud to offer a high quality product at the industries most competitive pricing. Thank you for your confidence in us and our product.

If you desire to return your vehicle to stock, it is the customers responsibility to save all stock hardware and components.

The Tuff Country EZ-Ride Suspension product safety label that is included in your kit box must be installed inside the cab in plain view of all occupants.

Special note: BEFORE installation begins, it is the customers/installers responsibility to make sure that all parts are on hand. If any parts are missing, please feel free to call one of our customer service representatives @ (801) 280-2777.

Important customer information:

Tuff Country EZ-Ride Suspension highly recommends that a qualified or a certified mechanic performs this installation.

It is the responsibility of the customer/installer to wear safety glasses at all times when performing this installation.

It is the customers/installers responsibility to read and understand all steps before installation begins. If you have any questions or concerns, please contact our technical department @ (801) 280-2777. Also, the OEM manual should be used as a reference guide.

This vehicles reaction and handling characteristics may differ from standard cars and/or trucks. Modifications to improve and/or enhance off road performance may raise the intended center of gravity. Extreme caution

must be utilized when encountering driving conditions which may cause vehicle imbalance or loss of control. **DRIVE SAFELY!** Avoid abrupt maneuvers: such as sudden sharp turns which could cause a roll over, resulting in serious injury or death.

It is the customers responsibility to make sure that a re-torque is performed on all hardware associated with this suspension system after the first 100 miles of installation. It is also the customers responsibility to do a complete re-torque after every 3000 miles or after every off road use.

After the original installation, Tuff Country EZ-Ride Suspension also recommends having the alignment checked every 6 months to ensure proper tracking, proper wear on tires and front end components. Tuff Country EZ-Ride Suspension takes no responsibility for abuse, improper installation or improper suspension maintenance. Usually OE alignment specs are ideal but on these particular kits we like to see the Castor a little bit lower than specs. It will help with tire wear and drivability.

Limited lifetime warranty

Notice to all Tuff Country EZ-Ride Suspension customers: It is your responsibility to keep your original sales receipt! If failure should occur on any Tuff Country EZ-Ride Suspension component, your original sales receipt must accompany the warranted unit to receive warranty. Warranty will be void if the customer can not provide the original sales receipt. Do not install a body lift in conjunction with a suspension system. If a body lift is used in conjunction with any Tuff Country EZ-Ride Suspension product, your Tuff Country EZ-Ride Suspension WARRANTY WILL BE VOID. Tuff Country Inc. ("Tuff Country") suspension products are warranted to be free from defects in material and workmanship for life if purchased, installed and maintained on a non-commercial vehicle; otherwise, for a period of twelve (12) months, from the date of purchase and installation on a commercial vehicle, or twelve thousand (12,000) miles (which ever occurs first). Tuff Country does not warrant or make any representations concerning Tuff Country Products when not installed and used strictly in accordance with the manufacturer's instructions for such installation and operation and accordance with good installation and maintenance practices of the automotive industry.

This warranty does not apply to the cosmetic finish of Tuff Country products nor to Tuff Country products which have been altered, improperly installed, maintained, used or repaired, or damaged by accident, negligence, misuse or racing. ("Racing is used in its broadest sense, and, for example, without regards to formalities in relation to prizes, competition, etc.) This warranty is void if the product is removed from the original vehicle and re-installed on that or any other vehicle. This warranty is exclusive and is in lieu of any implied warranty of merchantability, fitness for a particular purpose or other warranty of quality, whether express or implied, except the warranty of title. All implied warranties are limited to the duration of this warranty. The remedies set forth in this warranty are exclusive. This warranty excludes all labor charges or other incidental or consequential damages. Any part or product returned for warranty claim must be returned through the dealer of the distributor from whom it was purchased. Tuff Country reserves the right to examine all parts returned to it for warranty claim to determine whether or not any such part has failed because of defect in material or workmanship. The obligation of Tuff Country under this warranty shall be limited to repairing, replacing or crediting, at its option, any part or product found to be so defective. Regardless of whether any part is repaired, replaced or credited under this warranty, shipping and/or transportation charges on the return of such product must be prepaid by the customer under this warranty. Important information that needs to be read before installation begins:

This Suspension kit comes with (1) installation manual and some post installation procedure literature and it is the installers responsibility to make sure that the customer receives the post installation procedure literature. If a customer would like a copy of the installation manual, please have them visit our website at www.tuffcountry.com. Have them go to the customer care section to download these instructions. If you have any questions, please feel free to call us at (801) 280-2777.

Before installation begins, Tuff Country EZ-Ride Suspension highly recommends that the installer performs a test drive on the vehicle. During the test drive, check to see if there are any uncommon sounds or vibrations. If uncommon sounds or vibrations occur on the test drive, uncommon sounds or vibrations will be enhanced once the suspension system has been installed. Tuff Country EZ-Ride Suspension highly recommends notifying the customer prior to installation to inform the customer of these issues if they exist.

Tuff Country recommends using loctite on all new and stock hardware associated with the installation of this suspension system.

Part # 22500 does not work with the following Models. Bronco Sport, Badlands, Wildtrack, First Edition Model. Any Models with Sasquatch Package.

Tuff Country recommends a 34 x 11.50 sized tire once part # 22500 has been installed. 35 x 12.50 tires can be used with minor trimming. Due to different types of tread patterns, some aggressive tires in this size recommendation may require slight trimming of inner fender plastic. **Our tire and wheel fitments are only a guideline. Different production times or tolerances will vary and this size should only be used as a starting point. Each vehicle is different and will need to be treated as such.**

Recommended tools selection:

- Torque wrench
- Standard socket set
- Standard wrench set
- Metric socket set
- Metric wrench set
- Tape measure
- Hydraulic floor jacks
- Measuring Caliper
- Drill & Assorted drill bits

Please follow these instructions carefully:

Before installation begins, measure from the center of the wheel hub, to the bottom of the fender well, and record measurements below.

Pre-installation measurements:

Driver side front: _____

Passenger side front: _____

Driver side rear: _____

Passenger side rear: _____

At the end of the installation take the same measurements and compare to the pre-installation measurements.

Post-installation measurements:

Driver side front: _____

Passenger side front: _____

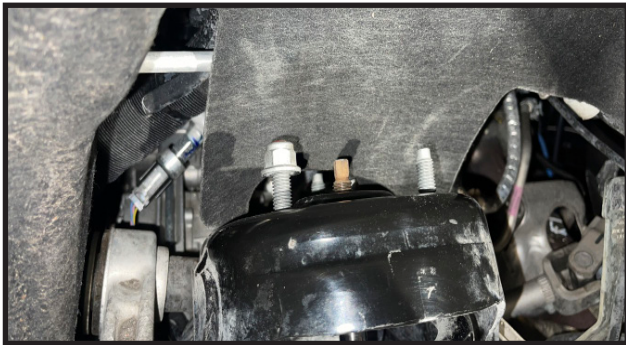
Driver side rear: _____

Passenger side rear: _____

Front end installation:

1. To begin installation, block the rear tires of the vehicle so that the vehicle is stable and can't roll. Safely lift the front of the vehicle and support the vehicle with a pair of jack stands. Place a jack stand on both the driver and the passenger side frame rail. Next, remove the front wheels and tires from both sides.

2. Working on the Driver side, Remove the 3 nuts on the Top strut mount, leave one of the nuts finger tight. Repeat on passenger side.



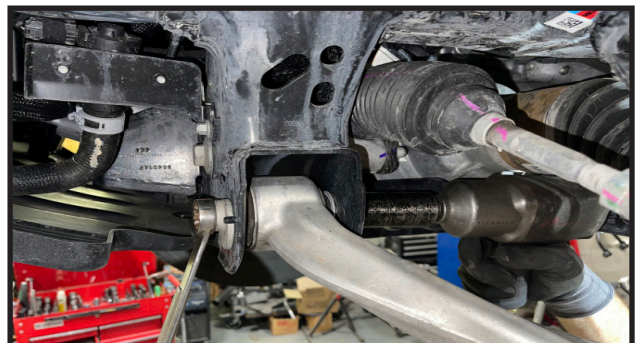
3. Remove the lower sway bar endlink hardware on the driver and passenger lower control arms. Remove the hardware securing the sway bar to the frame and remove the sway bar.



4. Remove the lower strut mounting hardware on the driver and passenger side.

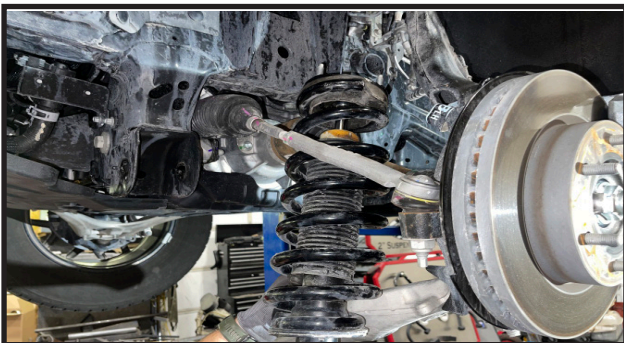
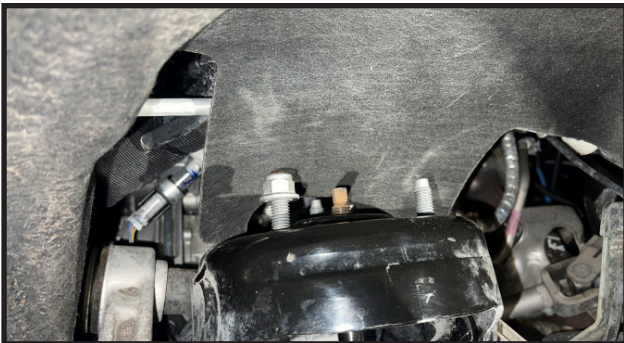


5. Remove lower control arm cam bolt hardware on the driver and passenger side.





6. Remove lower control arms from mounting pockets and lower strut mounts. Remove the remaining nut on the top strut mount and remove struts.



7. Remove the guide pin from the strut top hat. Looking at where the coil spring ends mark a line on the spring, Isolater and top hat, on the center of the 2 studs.

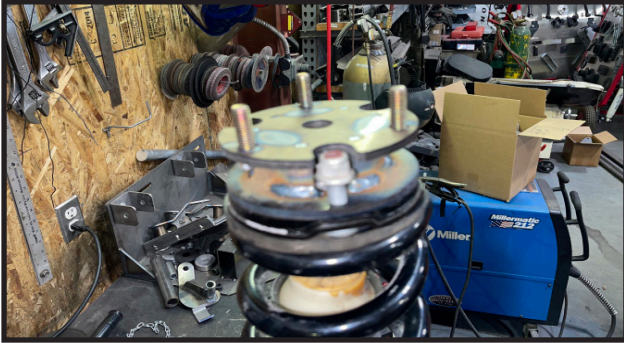


8. Using a strut spring compressor, Remove the nut on the top hat. Remove the top hat only and rotate 180 degrees, so there is now lined up to the mark on the coil spring and isolater. Re compress spring and re-install nut, **Torque to 80 ft lbs.**





9. Locate part # 22500-01, Install on top of the front struts using OE hardware. **Torque nuts to 85 ft lbs**



10. locate the 3/8" flange nuts. Re-install strut into the upper mount. use one of the 3/8" flange nuts to hang the strut loosely . Repeat on passenger side



11.Using OE hardware. Reinstall lower control arms into lower strut mount and and control arm mounts. Leave the cam bolt hardware loose. **Torque the lower strut mounting studs to 95 ft lbs.** Repeat on passenger side.



12. Re-install sway bar on to the lower control arms and to the the frame mounts. **Torque bolts to 75 ft lbs.**



13. Re-install the tires and wheels and torque the lug nuts to the wheel manufacturer's specifications. Carefully lower the vehicle back down to the ground and remove the jacks.

14. Install remaining 3/8" flange nuts on the upper strut mounts. **Torque to 55 ft lbs.**



15. Tighten all 4 lower control arm Cam bolt hardware. Torque to 130 ft lbs.

Front end Installation Complete!

Rear end Installation:

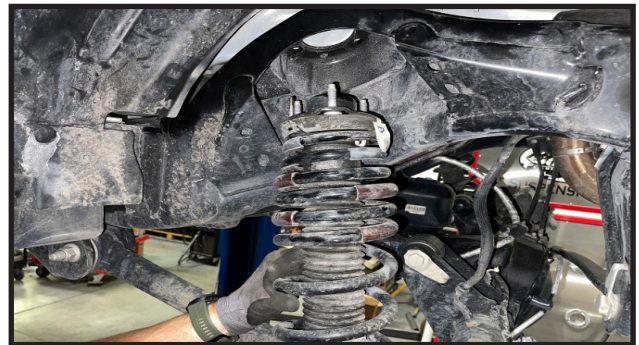
16. Begin with removing the two inner fender well clips, To help gain access. You can also fully remove the inner fender well if you would like. Repeat on passenger side.



17. Remove the track bar mounting bolt on the axle side.



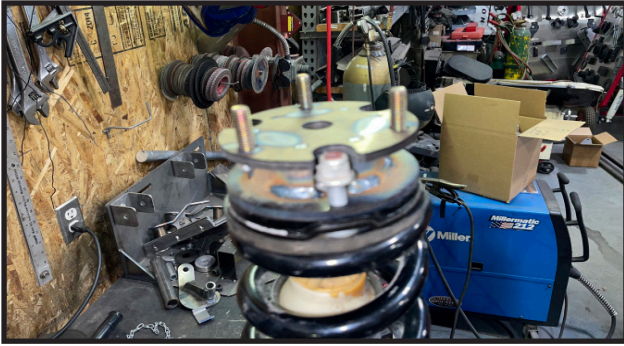
18. Remove the 3 upper strut mounting nuts, Remove the lower strut mounting hardware and remove the strut. Repeat on passenger side.



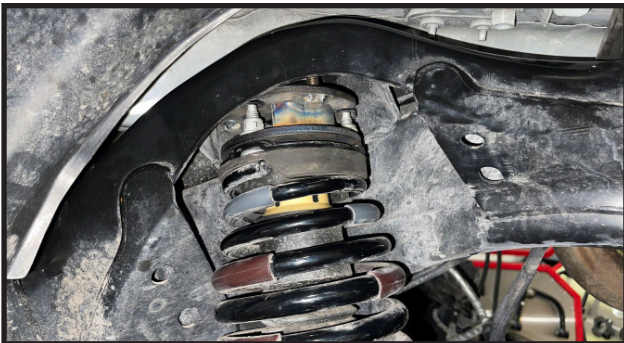
19. Remove the guide pin from the strut top hat.



20. Locate part # 22500-01, Install on top of the rear struts using OE hardware. Torque nuts to 85 ft lbs



21. locate the 3/8" flange nuts. Re-install strut into the upper mount. use one of the 3/8" flange nuts to hang the strut loosely. Repeat on passenger side



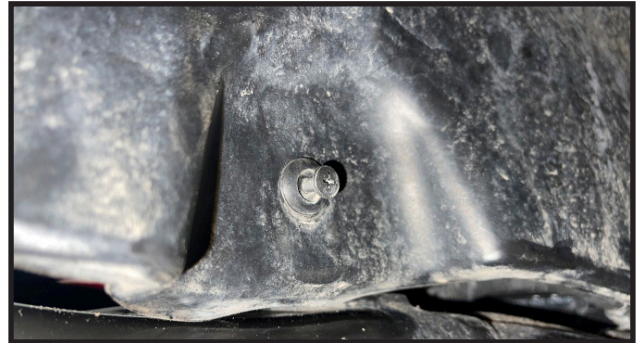
22. Re-install OE hardware on the lower strut mount. Repeat on passenger side. **Torque to 140 ft lbs.**



23. Install remaining 3/8" flange nuts on the upper strut mount. Repeat on passenger side. **Torque to 55 ft lbs.**



24. Re-install inner fender well clips. repeat on passenger side.



25. Re-install the tires and wheels and torque the lug nuts according to the wheel manufacturer's specs. Carefully lower the vehicle back down to the ground.

26. Re-install the axle side of the rear track bar using the OE hardware. **Torque to 140ft lbs**



Installation Complete!

Check and double check to make sure that all steps were performed properly. After the completion of this install, Tuff Country Recommends taking the vehicle in for a complete front end alignment.

Tuff Country EZ-Ride Suspension recommends that a complete re-torque is done on all bolts associated with this suspension system. It is the customers responsibility to make sure that a re-torque is performed on all hardware associated with the system after the first 100 miles of installion. It is also the Customers responsibility to do a complete re-torque after every 3,000 miles or after every off road use. Neglect of following these steps could cause brackets to come loose and cause serious damage to the suspension system and to the vehicle. erious damage to the suspension system and to the vehicle.