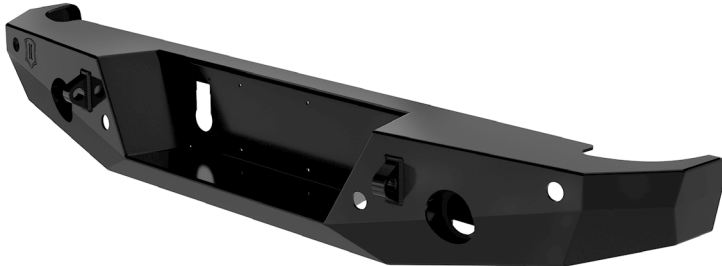




JT PRO SERIES REAR BUMPER

DOCUMENT: INST_25166_REVA • UPDATED: JUN 2021

Thank you for purchasing this ICON Vehicle Dynamics product. Please read through this entire document before proceeding with installation. If you are not confident in your mechanical skills, please seek the help of a professional to perform the installation. Check your packages immediately upon arrival to ensure that everything listed is included, and to check for damage during shipping. If anything is missing or damaged, or if you need technical assistance with any aspect of this installation, call (951) 689-ICON as soon as possible.



APPLICATION

These installation instructions apply to the following products:

25166 2020-UP JT PRO SERIES REAR BUMPER

COMPONENTS INCLUDED

- (1) JT PRO Series Rear Bumper
- (1) JT Tow Receptacle Spacer

HARDWARE INCLUDED

- (4) 7/16-14 X 1 Gr8 Hex Head Cap Screw
- (8) 7/16-14 Gr8 Nylon Insert Lock Nut
- (12) 7/16 Gr8 SAE Flat Washer
- (4) 1/4-20 X 3/4 SS Button Head Cap Screw
- (4) 1/4-20 Gr8 Nylon Insert Lock Nut
- (4) 1/4 Gr8 SAE Flat Washer
- (4) 10-32 X 1/2 SS Button Head Cap Screw
- (4) 10-32 Nylon Insert Lock Nut
- (4) #10 Gr2 Flat Washer
- (4) Backup Sensor Bezel Assembly

TECH NOTES

NOTE: These installation instructions are based on a clean installation on to a stock vehicle. Previously modified vehicles may require additional steps.

TOOLS REQUIRED

- 5/8", 15mm, 16mm & 21mm sockets and ratchet
- 3/8", 7/16" & 5/8" combination wrench
- 1/8" & 5/32" hex key (Allen® wrench) or driver bit
- T50 Torx® driver bit
- Flat screwdriver
- Torque wrench

IMPORTANT NOTICES - PLEASE READ FIRST

- ✓ **READ ALL INSTRUCTIONS THOROUGHLY FROM START TO FINISH BEFORE BEGINNING INSTALLATION! IF THESE INSTRUCTIONS ARE NOT PROPERLY FOLLOWED SEVERE FRAME, SUSPENSION AND TIRE DAMAGE MAY RESULT TO THE VEHICLE!**
- ✓ **ICON VEHICLE DYNAMICS RECOMMENDS ALL INSTALLATION TO BE PERFORMED BY A PROFESSIONAL SHOP/SERVICE TECHNICIAN. PRODUCT FAILURE CAUSED BY IMPROPER INSTALLATION WILL NOT BE COVERED UNDER ICON'S WARRANTY POLICY.**

INSTALLATION INSTRUCTIONS

1. Ensure the vehicle is placed on a flat, level surface with the transmission in PARK, the tires chocked, and the emergency brake ON. Wear safety glasses from this point forward.
2. If the OE bumper is still installed, begin by using a flat screwdriver to remove the license plate from the bumper.
3. Use a 16mm socket with ratchet to remove the two bolts that are now exposed, which were behind the license plate.
4. Reach behind the bumper and disconnect the vehicle wiring harness from the back side of the trailer tow receptacle. Depress a tang on the side of the plug then carefully wiggle it to disconnect. Use a flat screwdriver or trim removal tool to disconnect the harness from the bumper where it is attached with a plastic clip.
5. Disconnect the bumper wiring harness (separate from the tow harness) from the vehicle wiring harness by separating the connector located on the inside driver's side frame rail, just forward of the bumper. Use the screwdriver or trim tool to dislodge any plastic harness clips that attached the bumper harness to the vehicle frame.
6. Remove the trailer tow receptacle from the OE bumper by depressing the tangs on the two metal clips on the back side of the receptacle, with a



- flat screwdriver, and pushing the receptacle out through the face of the bumper (toward the rear of the vehicle).
7. If the vehicle is equipped with backup sensors, find the connection where the sensor harness plugs in to the vehicle wiring harness and disconnect it, along with any plastic clips attaching the sensor harness to the vehicle.
 8. Use a T50 Torx® driver bit and ratchet to remove the two bolts on the underside of the bumper on either side of the tow hitch.
 9. If the vehicle is equipped with OE lower corner guards, remove them by using a 16mm socket (3 bolts each side) to detach them from the frame brackets, a 15mm socket (2 bolts each side) to detach them from the back of the bumper, and remove them from the vehicle. Also remove the rocker guard brackets from the vehicle's frame rails by using 15mm & 18mm sockets on the three bracket bolts (per side).
 10. Use a 16mm socket and ratchet to remove the two nuts that attach the bumper to the frame horn, on the outside of the frame rail. There are two on each side of the vehicle.
 11. With the help of a friend, remove the bumper by pulling it straight back and away from the vehicle, and set it on the floor or a bench.
 12. Use a 21mm socket and ratchet to remove the two tow hook bolts and tow hook from the end of the frame rail on both sides of the vehicle.
 13. Use a flat screwdriver or trim removal tool to dislodge all of the plastic harness clips on the back of the OE bumper and remove the various wiring harnesses from the bumper.
 14. If equipped, remove the backup sensors from the OE bumper by spreading the tabs on the back of the retaining ring and pushing the sensor out through the back of the bumper. Use the included Backup Sensor Bezels to re-install them into the sensor holes in the Pro Series bumper. First insert the sensor into the plastic bezel and then insert the bezel through the hole in the bumper. Secure it in place by snapping the supplied Bezel Lock Clip onto the bezel housing on the back-side of the bumper. Be careful to reinstall each sensor into the same position in the new bumper that it occupied in the OE bumper. Reinstall the backup sensor wiring harness on to the back side of the Pro Series bumper and connect it to each backup sensor.
 15. Locate the aluminum Tow Receptacle Spacer that was included with your Pro Series bumper, and use the included 10-32 X 1/2 SS Button Head Cap Screws, washers and lock nuts to attach it to the back side (inside) of the bumper, oriented so that the hole in the spacer matches the hole cut into the bumper. With the spacer in place, install the OE trailer tow receptacle into the Pro Series bumper, making sure the tangs on the two metal clips snap into place when the plug is firmly seated. Plug the OE tow receptacle wiring harness into the tow receptacle and secure the harness in place on the back side of the bumper.
 16. Use the supplied 10-32 X 1/2 SS Button Head Cap Screws, washers and lock nuts to attach the license plate to the Pro Series bumper.
 17. With the help of a friend, lift the bumper into place on to the vehicle's frame rails. The four (2 on each side) pre-installed 7/16-14 threaded studs on the back of the bumper should slide into the mounting holes in the bumper mount brackets on the ends of the frame rails. With the bumper in place and seated against the mount brackets, install a supplied 7/16-14 Gr8 Nylon Insert Lock Nut with 7/16 SAE Flat Washer at each of the four mounting studs.
 18. Install the four (4) supplied 7/16-14 X 1 Gr8 Hex Head Cap Screws with the remaining 7/16-14 Gr8 Nylon Insert Lock Nuts and 7/16 SAE Flat Washers at the former OE tow hook locations, two (2) bolts on each side, securing the bumper to the bottom of the frame rail on each side.
 19. Once all fasteners have been installed on both sides of the bumper, fully tighten all fasteners with a ratchet and socket. Torque the eight (8) 7/16-14 fasteners (5/8" socket) to 76 ft-lbs.
 20. Re-connect the backup sensor and tow wiring harnesses to the vehicle wiring harness. Re-use any plastic harness clips to secure wiring in place.
 21. This bumper is designed with recessed backup lamp mounting flanges to fit 2-1/2" round LED backup lamps with rubber grommets (sold separately). If you have purchased backup lamps, install them into the mounts at this time by first inserting the rubber grommet, and then pushing the lamp housing into place within the grommet. (You will use the electrical pigtailed that came with the lamps to wire them into your Jeep's backup lamp circuit before pushing the lamps into place, a procedure which is not covered in these instructions).



22. It is up to the installer to install a license plate illumination lamp if required by local regulations. Supplies and procedures to do so are not included with the bumper.

Congratulations! Your installation is complete.

RETORQUE ALL NUTS, BOLTS AND LUGS AFTER 100 MILES AND PERIODICALLY THEREAFTER.



LIMITED LIFETIME WARRANTY

ICON Vehicle Dynamics warrants to the original retail purchaser who owns the vehicle on which the product was originally installed. ICON Vehicle Dynamics does not warrant the product for finish, alterations, modifications and/or installation contrary to ICON Vehicle Dynamics instructions. ICON Vehicle Dynamics products are not designed, nor are they intended to be installed on vehicles used in race applications, for racing purposes or for similar activities. (A "race" is defined as any contest between two or more vehicles, or a contest of one or more vehicles against the clock, whether or not such contest is for a prize). This warranty does not include coverage for police or taxi vehicles, race vehicles, or vehicles used for government or commercial purposes. Also excluded from this warranty are sales outside of the United States of America and Canada.

ICON Vehicle Dynamics' obligation under this warranty is limited to the repair or replacement, at ICON Vehicle Dynamics' discretion, of the defective product. Any and all costs of removal, installation or re-installation, freight charges and incidental or consequential damages are expressly excluded from this warranty. Items that are subject to wear are not considered defective when worn and are not covered.

ICON Vehicle Dynamics components must be installed as a complete kit as shown in our current application guide. Any substitutions or exemptions of required components will immediately void the warranty. Some finish damage may happen to parts during shipping and is not covered under warranty.

This warranty is expressly in lieu of all other warranties expressed or implied. This warranty shall not apply to any product that has been improperly installed, modified or customized subject to accident, negligence, abuse or misuse.



ICON VEHICLE DYNAMICS®
PERFORMANCE SUSPENSION SYSTEMS AND SHOCK ABSORBERS

7929 Lincoln Ave. Riverside, CA 92504
Phone: 951.689.ICON Fax: 951.689.1016
www.iconvehicledynamics.com



FOLLOW US ON FACEBOOK!

