



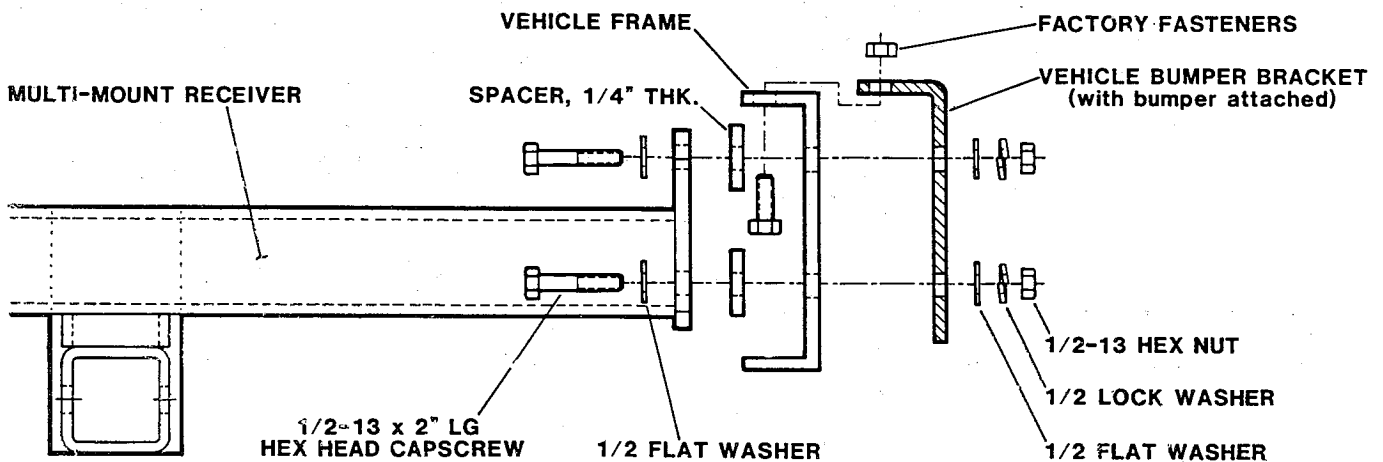
INSTALLATION INSTRUCTIONS

FOR MULTI-MOUNT
RECEIVER 25855

NOTE: Please read these instructions thoroughly before starting the installation of this kit. Minor modifications may be required due to variations between vehicles.

1. Remove the vehicle bumper (with bumper brackets attached) from the vehicle frame.
2. Tape a 1/4" thick spacer over each hole in the multi-mount receiver ends.
3. Position the multi-mount receiver into place inside the vehicle frame. Next, set the vehicle bumper and bumper brackets onto the vehicle frame. Install the fasteners as shown below. Torque fasteners to 75-ft/lbs.

NOTE: The upper factory fasteners may be installed from the bottom up, as shown.



FRONT VIEW