



# FITTING INSTRUCTIONS

## **ARB WINCH BULL BAR TO SUIT**

**SUZUKI VITARA WITH 5/6,000lb WINCH**

**No 3426010**

### **WARNING**

**THIS BULL BAR MUST NOT BE FITTED TO AIRBAG EQUIPPED VEHICLES. FITMENT TO AIRBAG EQUIPPED VEHICLES MAY INTERFERE WITH THE PROPER OPERATION OF THE AIRBAGS AND MAY RESULT IN SERIOUS INJURY.**

#### **TAKE NOTE OF THE FOLLOWING:**

- **THIS PRODUCT MUST BE INSTALLED EXACTLY AS PER THESE INSTRUCTIONS USING ONLY THE HARDWARE SUPPLIED.**
- **IN THE EVENT OF DAMAGE TO ANY BULL BAR COMPONENT, CONTACT YOUR NEAREST AUTHORISED ARB STOCKIST. REPAIRS OR MODIFICATIONS TO THE IMPACT ABSORPTION SYSTEM MUST NOT BE ATTEMPTED.**
- **DO NOT USE THIS PRODUCT FOR ANY VEHICLE MAKE OR MODEL, OTHER THAN THOSE SPECIFIED BY ARB.**
- **DO NOT REMOVE LABELS FROM THIS BULL BAR.**
- **THIS PRODUCT OR IT'S FIXING MUST NOT BE MODIFIED IN ANY WAY.**

#### **BULL BAR FITTING KIT No 6171073**

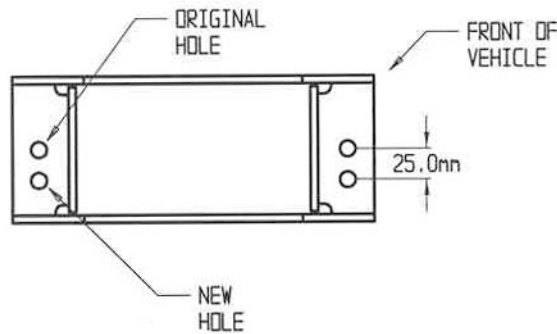
<b>PART No</b>	<b>norm</b>	<b>DESCRIPTION</b>
6151146	2	50mm U BOLT
6151122	4	5/16" NUT
4581044	8	M8 FLAT WASHER
4581046	8	M8 SPRING WASHER
6151022	4	M8 X 25mm BOLT
3193420	2	ANCHOR PLATE
6151071	4	3/8" X 1" BOLT
4581040	4	3/8" FLAT WASHER
4581048	4	3/8" SPRING WASHER
6151110	2	5/8 X 6" BOLT
4581051	4	5/8" FLAT WASHER
6151140	2	5/8" NYLOC NUT
6151074	2	3/8" X 1 3/4" BOLT
4581040	4	3/8" FLAT WASHER
3751214	1	CONTROL BOX BRACKET
6151017	2	M6 X 16mm BOLT
4581036	2	M6 SPRING WASHER
4581035	2	M6 FLAT WASHER
6151031	2	M6 NUT
180302	4	CABLE TIES
BAT002	2	BLACK CABLES
BAT003	1	RED CABLE

#### **TOOLS REQUIRED**

Basic tool kit and drill with 1/2" drill bit.

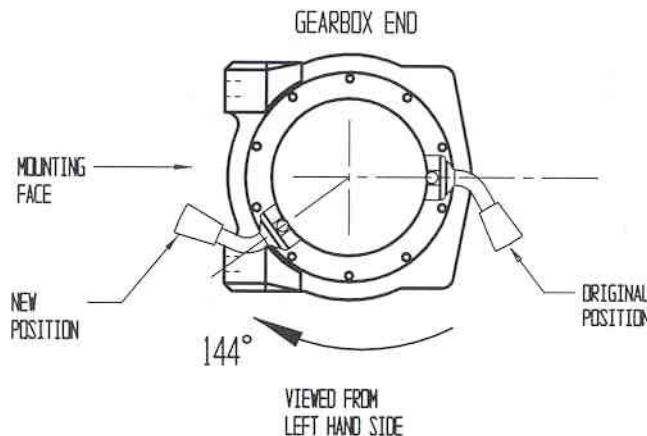
## FITTING THE 5 & 6,000lb WINCH

1. Place the bull bar on a suitable stand.
2. Remove the roller fairlead side rollers by removing the circlips from each pin. These pins will be replaced with items from the fitting kit supplied. Discard side pins and circlips.
3. New mounting holes must be drilled into the roller fairlead to line up with the winch mounting holes in the bull bar. Drill two 1/2" diameter holes at the position shown in the diagram. Mark out new holes 25mm down from original holes and drill out to 1/2" holes. (Refer to the diagram.)



4. To fit the winch into bull bar, the winch gearbox must first be rotated to ensure control handle is in the correct location. Loosen and remove all the cap head bolts. **CAUTION: Do not remove the gearbox.** Pull the gearbox just out enough to rotate the handle clockwise by 144° (4 holes spaces) to the new position. (Refer to the diagram.)

NOTE: The gearbox is situated on the left hand side of the bull bar, as viewed from inside the vehicle. The winch clutch handle should be positioned at the base of the bull bar and must face forward. The cable spools from the bottom.

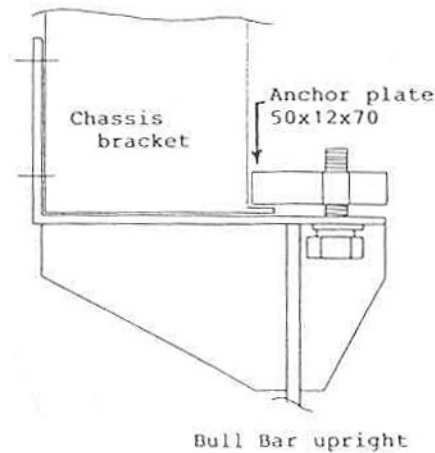


5. Position the winch on top of a 20 or 60 litre drum with mounting holes facing upwards.
6. Place the bull bar on top of the winch and align the mounting holes. Using bolts supplied from the winch kit, finger tighten the two upper bolts.
7. Place the roller fairlead over the lower holes on the bull bar and secure in place using two of the 3/8" x 1 3/4" bolts and flat washers. Ensure winch is correctly aligned and tighten all bolts.
8. Fit the two 5/8" x 6" bolts and flat washers through bull bar, roller fairlead and side rollers. Fit the two 5/8" nyloc nuts and tighten making sure the rollers turn freely. Tighten all the bolts.

## FITTING THE BULL BAR TO THE VEHICLE

9. Remove indicator assemblies from the existing bumper bar.
10. Remove the number plate and bumper from vehicle. Place aside the number plate and fasteners.
11. Lift the bull bar into position and bolt up using the existing bumper bar mounting position using the four M8 x 25mm and original bolts.

12. Slide the U bolts over the chassis cross member pipe and through the hole locations on the bottom of the uprights. Fasten with the four 5/16" nuts, flat and spring washers.
13. Bolt the anchor plates on the inside of the uprights and behind the vehicle boxed in the chassis brackets using the four 3/8" x 1" bolts, M8 flat and spring washers. Tighten all bolts. (Refer to diagram.)



14. Refit the indicator and number plate assemblies to the bull bar.
15. Connect the winch control box cables to the winch motor. Refer to the Warn handbook for additional information. Remove the short (+) & (-) winch cables and replace with the long cables supplied. **Refer to the Warn winch manual for vehicle wiring instructions.**
16. Fit the winch control box to the bracket supplied using the two 1/4" nuts, flat washers and spring washers (supplied in Warn kit). The winch control box must be mounted under the bonnet in a convenient location., using the two M6 x 16mm bolts, nuts, flat and spring washers supplied

**IMPORTANT: Ensure that these cables are installed well clear of sharp, hot or moving objects.** Secure the winch cables to the vehicle with the supplied cable ties.

**WARNING: UNDER NO CIRCUMSTANCES IS THE WINCH TO BE USED BEFORE THE OWNER'S MANUAL HAS BEEN READ AND UNDERSTOOD. FAILURE TO COMPREHEND THE MANUAL CONTENTS COULD RESULT IN OPERATOR DANGER AND WINCH FAILURE.**