

DELUXE /WINCH BULL BAR TO SUIT LAND ROVER DEFENDER & 110

PART No: 3432090, 3432160 (MODELS WITH FORWARD PROTRUDING GRILL)

WARNING

**THIS BULL BAR MUST NOT BE FITTED TO AIRBAG EQUIPPED VEHICLES.
FITMENT TO AIRBAG EQUIPPED VEHICLES MAY INTERFERE WITH THE
PROPER OPERATION OF THE AIRBAGS AND MAY RESULT IN SERIOUS INJURY.**

TAKE NOTE OF THE FOLLOWING:

- **THIS PRODUCT MUST BE INSTALLED EXACTLY AS PER THESE INSTRUCTIONS USING ONLY THE HARDWARE SUPPLIED.**
- **IN THE EVENT OF DAMAGE TO ANY BULL BAR COMPONENT, CONTACT YOUR NEAREST AUTHORISED ARB STOCKIST. REPAIRS OR MODIFICATIONS TO THE IMPACT ABSORPTION SYSTEM MUST NOT BE ATTEMPTED.**
- **DO NOT USE THIS PRODUCT FOR ANY VEHICLE MAKE OR MODEL, OTHER THAN THOSE SPECIFIED BY ARB.**
- **DO NOT REMOVE LABELS FROM THIS BULL BAR.**
- **THIS PRODUCT OR IT'S FIXING MUST NOT BE MODIFIED IN ANY WAY.**
- **THE INSTALLATION OF THIS PRODUCT MAY REQUIRE THE USE OF SPECIALISED TOOLS AND / OR TECHNIQUES.**
- **IT IS RECOMMENDED THAT THIS PRODUCT IS ONLY INSTALLED BY TRAINED PERSONNEL**
- **THESE INSTRUCTIONS ARE CORRECT AS AT THE PUBLICATION DATE. ARB CORPORATION LTD. CANNOT BE HELD RESPONSIBLE FOR THE IMPACT OF ANY CHANGES SUBSEQUENTLY MADE BY THE VEHICLE MANUFACTURER.**
- **DURING THE INSTALLATION, IT IS THE DUTY OF THE INSTALLER TO CHECK CORRECT OPERATION/ CLEARANCES OF ALL COMPONENTS.**

TOOLS REQUIRED -

Basic tool kit

PROCEDURE -

WINCH & ROLLER FAIRLEAD FITMENT

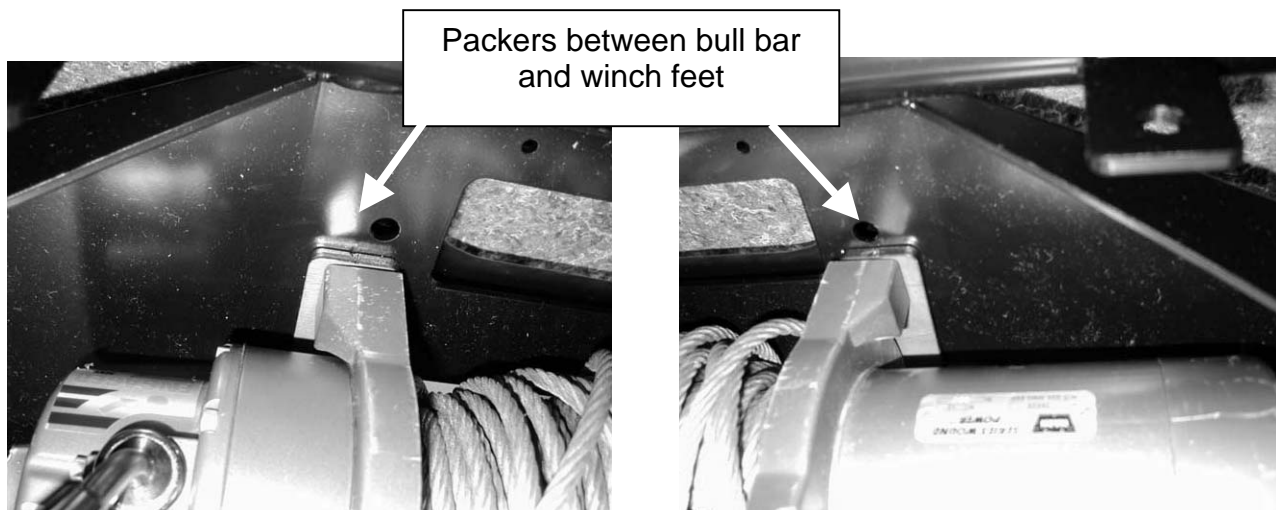
New mounting holes must be drilled in the roller fairlead to line up with the winch mounting holes in the bull bar.

1. Remove circlips from the pins retaining the side rollers.
2. Remove side pins and side rollers from roller fairlead.
3. Position roller fairlead hard up against roller fairlead bracket on the bull bar.

4. Using the lower winch mounting holes in the bull bar as a guide, mark two new holes in the roller fairlead. Use these marks to drill two 1/2" holes in the roller fairlead.
5. Position the winch on top of a 20 litre or 60 litre drum with mounting holes facing upwards.

If fitting a warn XD8000 or XD9000 winch, place one packer between the mating face of the bull bar and each of the winch feet as shown below. Use the 3/8" x 1 3/4" bolts supplied in the bull bar fitting kit for steps 6 and 7.

If fitting a warn XP 9500 winch, place two packers between the mating face of the bull bar and each of the winch feet as shown below. Use the 3/8" by 1 3/4" bolts for step 6 and the 3/8" x 2 1/4" bolts for step 7.



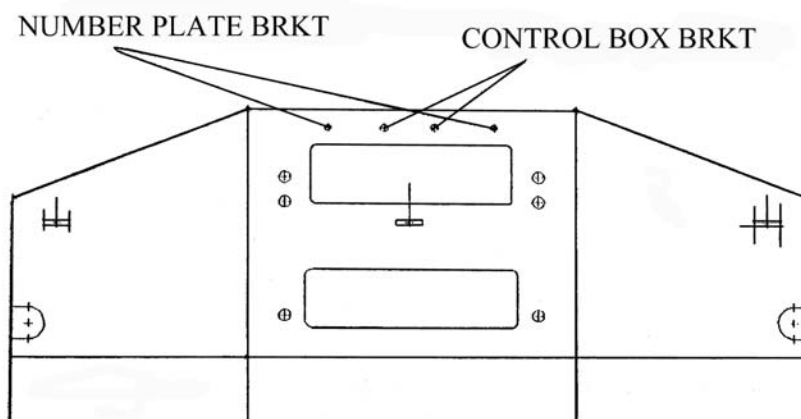
6. Place the bull bar on top of the winch and align mounting holes. Using bolts and 7/16" washers supplied in ARB kit, finger tighten the two upper bolts.
7. Place roller fairlead in position over two lower holes, insert bolts and finger tighten.
8. Ensure winch and roller fairlead are aligned and tighten all bolts.
9. Using 6" bolts supplied, place a flat washer under the head of both bolts through roller fairlead bracket and side rollers. Fit nyloc nuts and tighten so that rollers turn freely.
10. Fit the control box to the bull bar using the control box bracket provided. Use the two 8mm holes in the centre of the bar to mount the control box bracket (refer to diagram).

BULL BAR FITTMENT

1. For vehicles fitted with forward protruding grille, remove grille and grille support panel. This is the panel to which the grill is attached.
2. Remove bumper bar from vehicle.
3. Remove captive nut plates from original bumper and fix to bull bar internal chassis bracket plates.

4. Lift bull bar onto chassis rails and refit original bumper bolts through bull bar chassis brackets and chassis rails. Tread bolts into bumper captive nut plates. Make bolts finger tight.
5. Make sure the bull bar is in correct alignment with vehicle and tighten all nuts and bolts.
6. Drill one 1/2" hole through each chassis rail using the bull bar as a template. Bolt bar into position using the bolts supplied.
7. Refit registration plate to two outer holes (refer to diagram) using 6mm hardware.
8. For vehicle fitted with forward protruding grille, refit the grille and panel removed during step 2.
9. Wire up winch as per winch manual instructions.
10. Check operation of winch as per winch manual.

UNDER NO CIRCUMSTANCES IS THE WINCH TO BE USED BEFORE THE OWNER'S MANUAL HAS BEEN READ & UNDERSTOOD. FAILURE TO COMPREHEND THE MANUAL CONTENTS COULD RESULT IN OPERATOR DANGER & WINCH FAILURE.



L/ROVER DEFENDER
 PLACEMENT FOR 8000LB + 9000LB CONTROL BOX BRKT
 PLACEMENT FOR NUMBER PLATE BRKT