



Protecting Your Adventure Lifestyle

4DR DIY RENEGADE RAIL KIT

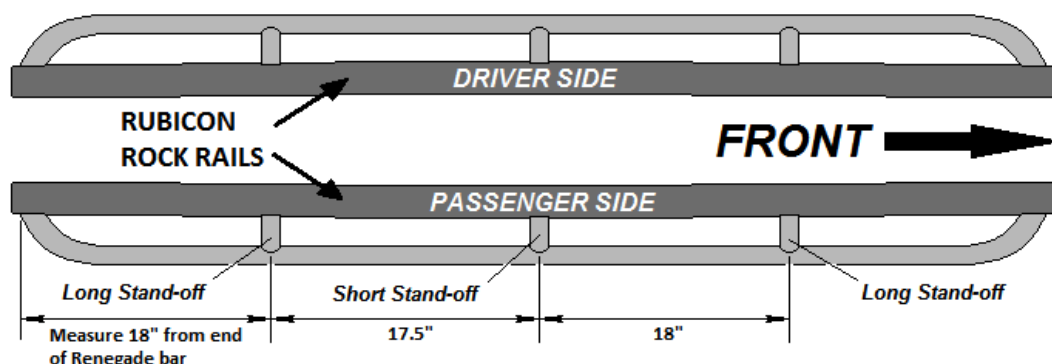
INSTALLATION INSTRUCTIONS

54005-54006

NOTE: Please read through the instructions carefully before beginning. This DIY Rubicon rock rail enhancement kit is intended as a 'weld-on' application. If you are not confident in your welding abilities, please seek out a qualified welder to install these for you. Be sure to retain all factory hardware for reinstallation.

Weld-On Installation:

1. Uninstall the OEM Rubicon rock rails and prep the outside mounting surface by removing any paint in the areas you will be welding to. Remove the plastic end caps at this time as well.
2. Unaltered OEM JK Rubicon rock rails are 76.5" in length. If your Jeep is equipped with 35" or larger tires, we recommend you trim approx. 1.5" off of the factory Rubicon rail where it extends into the rear wheel well. (See image to the right) If you decide to reuse the plastic end caps, make the cut vertical so the end cap fits properly on reinstallation and drill a new hole for the plastic rivet.
3. Clamp the Rubicon rock rail down onto your work surface so it is oriented as it would appear installed on your Jeep. Now begin the bar placement process by holding one of the Renegade bars against the Rubicon rail so the angled ends of the Renegade bar are flush. This should set the Renegade bar with a slight upwards angle. Next, center the Renegade bar horizontally against the Rubicon rail and visually align the top surfaces of both so they are level. i.e. The top of the Renegade bar should be the same height as the Rubicon rail. When you are satisfied with placement, tack-weld the Renegade bar to the Rubicon rail.
4. Now you will be locating the Renegade bar stand-offs. There are 1 short & 2 long stand-offs per side. If you have kit #54005 (no steps) and do not plan on adding the step plates in the future, you may space the stand-offs along the renegade rail evenly. If you have kit #54006 with the steps and gussets, refer to the image below for proper placement of the bar stand-offs. Once satisfied with their positioning, tack-weld them into place. For kit #54005, go ahead and fully weld around all components and proceed to step 6.



QUALITY

• INTEGRITY

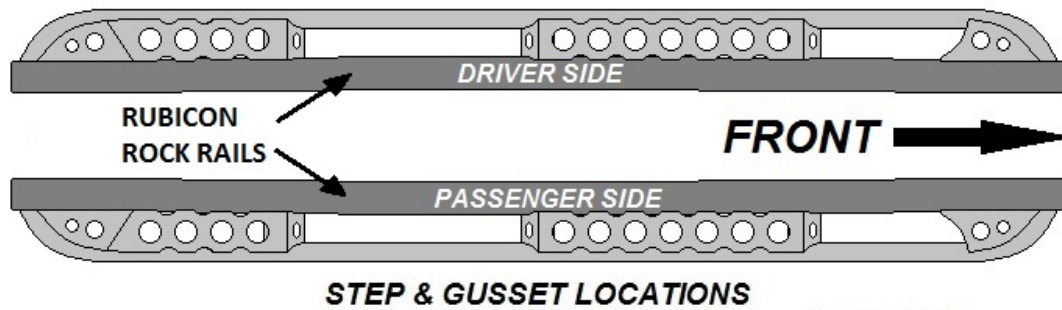
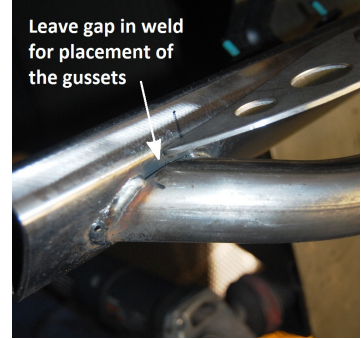
• INNOVATION

• SERVICE



Protecting Your Adventure Lifestyle

5. If you have purchased kit #54006, there will be dimpled step plates and gussets. Refer to image below for proper placement of these components. The angled sections that fit down between the Rubicon rail and the Renegade bar may require some slight fitment grinding for a precise fit. **NOTE:** Once satisfied with the steps positioning, set them aside and fully weld around the stand-offs and only of the way around the bar ends **before** finish welding the steps and gussets on. This weld is so the gussets will lay completely flat against the bar and rail. Once the gussets are tack-welded you can then fully weld the bar ends.



6. Thoroughly clean all surfaces of any grease, oil or weld splatter then spray all bare metal with a protective paint. For a much more durable finish, Warrior recommends you locate a local powdercoat or bedliner company to finish coat the Renegade Rails before installation onto your Jeep.

