

## 2019-20XX DODGE 2500-3500 CREW CAB 6'4" BED ACCESS

### RUNNING BOARD INSTALLATION INSTRUCTIONS



# SAFETY

**Know Safety, no injury. Know injury, no safety. ~Author Unknown**  
If there are any questions, call 1-855-HHTOUGH

- **READ ALL SAFETY INSTRUCTIONS BEFORE INSTALLATION**
  - FOLLOW ALL INSTRUCTIONS FOR PROPER ASSEMBLY
  - WEAR APPROPRIATE EYE PROTECTION
  - EXERCISE CARE WHEN LIFTING COMPONENTS
  - USE APPROPRIATE TORQUE FOR BOLTS
  - BLUE THREAD LOCKING COMPOUND IS RECOMMENDED ON ALL BOLTS





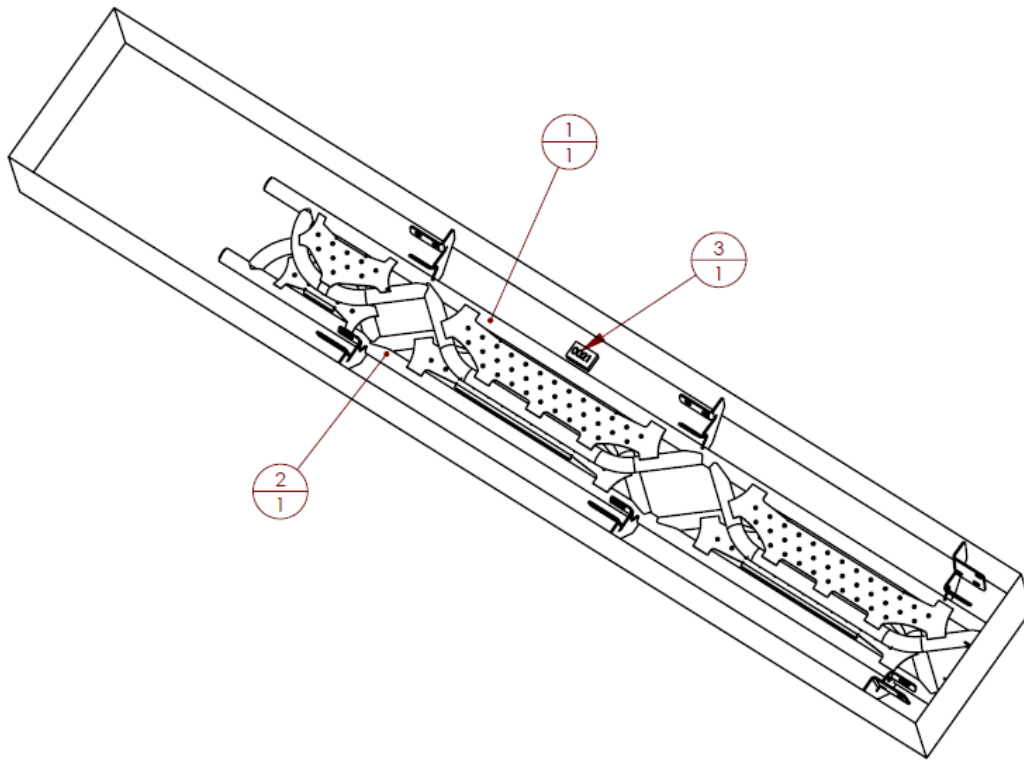
600-56-0991

| <b>Suggested Torque Values For Steel Grade 5 Standard Bolts</b> |                  |                       |
|---|------------------|-----------------------|
| BOLT DIAMETER (INCH)  | THREADS PER INCH | TORQUE (POUND - FEET) |
| 1/4   | 20               | 7                     |
| 5/16  | 18               | 14                    |
| 3/8   | 16               | 25                    |
| 7/16  | 14               | 40                    |
| 1/2   | 13               | 60                    |
| 9/16  | 12               | 88                    |
| 5/8   | 11               | 120                   |
| 3/4   | 10               | 200                   |
| 7/8   | 9                | 302                   |
| 1   | 8                | 466                   |

| <b>Suggested Torque Values For Steel Grade 8.8 Metric Bolts</b> |                   |                     |
|---|-------------------|---------------------|
| BOLT DIAMETER (mm)  | THREAD PITCH (mm) | TORQUE (POUND-FEET) |
| 6   | 1.0               | 7                   |
| 8   | 1.25              | 16                  |
| 10  | 1.5               | 32                  |
| 12  | 1.75              | 55                  |
| 14  | 2.0               | 88                  |
| 16  | 2.0               | 140                 |
| 18  | 2.5               | 195                 |
| 20  | 2.5               | 275                 |
| 22  | 2.5               | 375                 |
| 24  | 3.0               | 475                 |

**I. PARTS LIST**

| ITEM NO. | QTY. | PART NUMBER | DESCRIPTION      |
|----------|------|-------------|------------------|
| 1        | 1    | 60P-56-0992 | R RUNNING BOARD  |
| 2        | 1    | 60P-56-0993 | L RUNNING BOARD  |
| 3        | 1    | 60K-56-0021 | HARDWARE KIT #21 |



**REMOVE CONTENTS FROM BOX AND VERIFY ALL PARTS ARE PRESENT.**

**If there are any questions, call 1-855 HHTOUGH or email [HHORDERS@hammerheadarmor.com](mailto:HHORDERS@hammerheadarmor.com)**

## **II. TOOL LIST**

1. A Good Friend
2. Basic Tool Kit
3. T-40 Torx
4. 13mm wrench or socket
5. 9/16 wrench or socket
6. Rivet Nut installation Tool

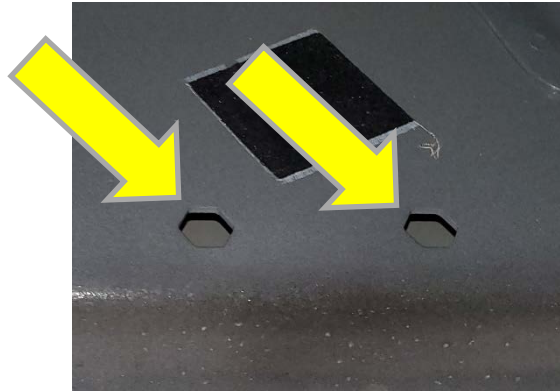
## **III. VEHICLE PREPARATION**

1. Park vehicle on level surface and engage parking brake.
2. Tape off bottom edge of vehicle to avoid contacting it with running boards.
3. Remove any existing running boards from your vehicle.

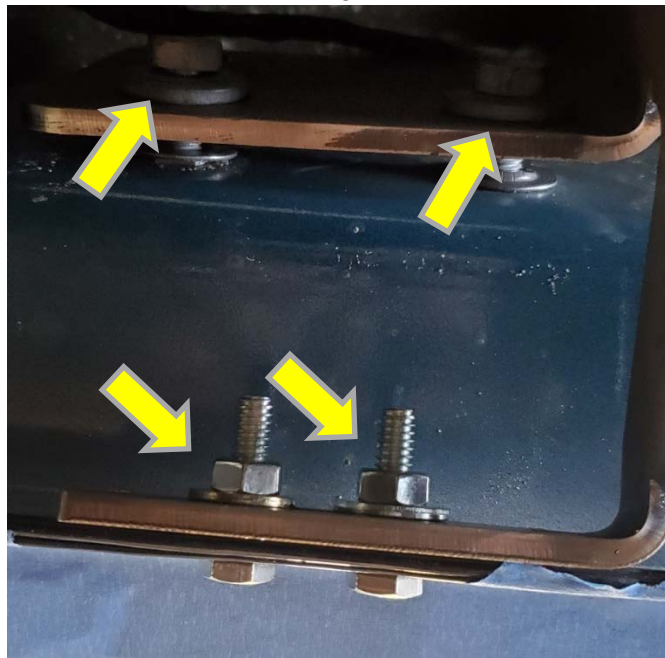
## **IV. RUNNING BOARD INSTALLATION**

600-56-0991

1. Install (7) rivet nuts from hardware kit #21 into the hexagonal holes in the truck body with a rivet nut installation tool: (3) for the front mount, (2) for the center mount, and (2) for the rear mount.



2. With the help of a friend, lift the running boards into place. Install (7) 3/8 bolts, (7) flat washers, and (7) lock washers from hardware kit #21. Do not tighten.
3. Align mounts on the inside of the pinch seam and install (5) torx head bolts, (5) flat washers, and (5) nylock nuts from hardware kit #21. Do not tighten



4. Align running board with front door seam of truck. Tighten all bolts at this time to the recommended torque values listed above with a T-40 torx, 13mm socket or wrench, and 9/16 socket or wrench.
5. Repeat steps for opposite side.

**Congratulations! Your Installation is now complete.  
Thank You for your purchase!**