

# 2019-XX GMC 1500

## BULL BAR INSTALLATION INSTRUCTIONS



# SAFETY

**Know Safety, no injury. Know injury, no safety. ~Author Unknown**

If there are any questions, call 1-855-HHTOUGH

- **READ ALL SAFETY INSTRUCTIONS BEFORE INSTALLATION**
  - FOLLOW ALL INSTRUCTIONS FOR PROPER ASSEMBLY
  - WEAR APPROPRIATE EYE PROTECTION
  - EXERCISE CARE WHEN LIFTING COMPONENTS
  - USE APPROPRIATE TORQUE FOR BOLTS
  - BLUE THREAD LOCKING COMPOUND IS RECOMMENDED ON ALL BOLTS

### **SUGGESTED TORQUE VALUES FOR STEEL GRADE SAE 5 BOLTS**

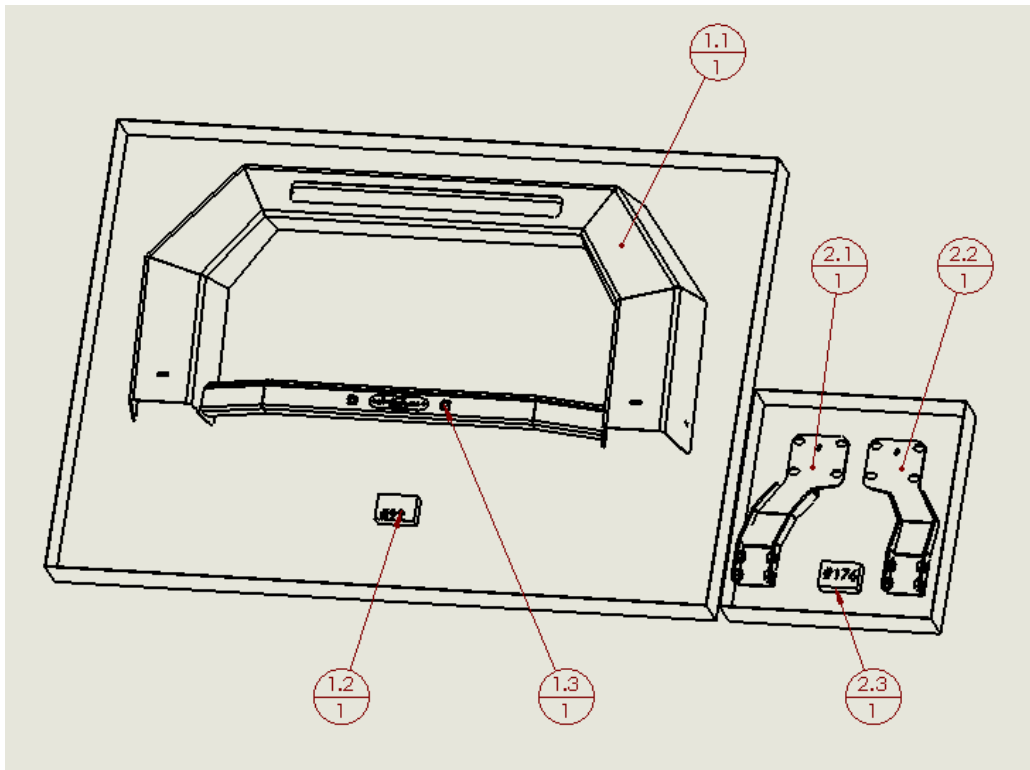
BOLT DIAMETER (INCH)	TREADS PER INCH	TORQUE (POUND-FEET)
1/4	20	7
5/16	18	14
3/8	16	25
7/16	14	40
1/2	13	60
9/16	12	88
5/8	11	120
3/4	10	200
7/8	9	302
1	8	466



600-56-0859

**I. PARTS LIST**

ITEM NO.	QTY	PART NUMBER	DESCRIPTION
1	1	600-56-0862	Standard Bullbar (Light Bar Only)
1.1	1	60P-56-0862	600-56-0862 POLISHED
1.2	1	60K-56-0092	HARDWARE KIT #92 (B BAR MOUNT)
1.3	1	443-01-0086	LICENSE PLATE MOUNTING KIT
2	1	600-56-0863	BULL BAR MOUNT KIT
2.1	1	601-56-5097	LEFT MOUNT WELDMENT
2.2	1	601-56-5096	RIGHT MOUNT WELDMENT
2.3	1	60K-56-0176	HARDWARE KIT #176



**REMOVE CONTENTS FROM BOX AND VERIFY ALL PARTS ARE PRESENT.**

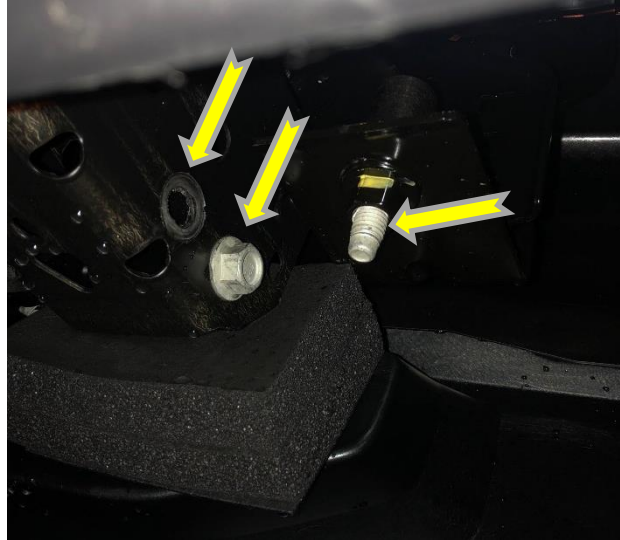
**If there are any questions, call 1-855 HHTOUGH or email HHORDERS@hammerheadarmor.com**

**II. TOOL LIST**

1. Basic Tool Kit
2. 9/16" socket
3. 3" extension
4. 18mm socket
5. 18mm wrench
6. 5/8" socket
7. 5/8" wrench

### III. VEHICLE PREPARATION

1. Park vehicle on level surface and engage parking brake.
2. Using an 18mm socket or wrench, remove the bolts attaching the tow hooks to the truck. Note: On the left side of the truck, you will have to remove the downward facing bolt to allow clearance to remove the tow hook bolt. (See Pic)



3. Once the tow hook bolts are removed, pull the tow hooks through the front of the bumper to remove them. There are foam blocks between the bumper and the frame that can make this step difficult, but the tow hook will pull through it. Once removed, set the tow hooks, OE hardware, and foam pieces to the side, they will not be used again.





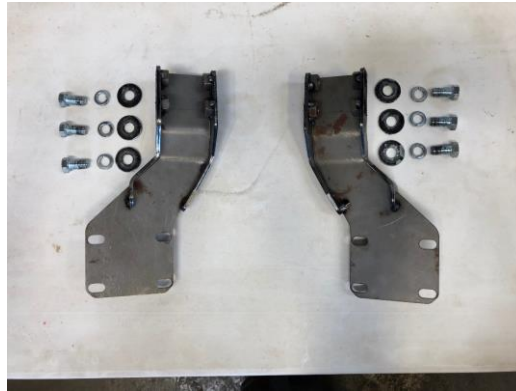
600-56-0859

#### IV. BULL BAR PREPARATION

1. Install lights with provided hardware at this time (if applicable)
2. Install license plate mounting kit if desired

#### V. BULL BAR INSTALLATION

1. Layout frame mounts and hardware kit #176 as shown:



2. Install the frame mounts through the tow hook cutouts in the bumper and into the frame. Thread a 7/16" bolt, washer, and lock washer from hardware kit #176 through each hole in the frame and into the mount. Do not fully tighten.
3. Lay down carpet or cardboard in front of the truck. Layout bull bar as shown. Use hardware kit #92 to attach the bull bar to the frame mounts. Use one 3/8"-16 bolt, one 3/8" lock washer, and one 3/8" flat washer per hole. Install all bolts. Using a 9/16" socket with 3" extension, tighten all bolts. Use torque values on page one.



4. Route light wires down the uprights and on top of the frame mount into the truck's bumper. Secure them with zip ties.
5. Have a friend help you align the bull bar. Push the top of the bull bar toward the truck and use a 5/8" wrench or socket to tighten the frame mount bolts. Use the torque values on page one.

**Congratulations! Your Installation is now complete.  
Thank You for your purchase!**