



INSTALL INSTRUCTIONS

Stealth Front Bumper

Product : 611XXX

Application : 2011-2016 Ford Super Duty

I WARNING

Read the instructions completely before beginning installation. Before tightening bolts, drilling or cutting where required, check to make sure there are no obstructions such as brake, fuel or electrical lines which may be damaged. Also keep in mind this is an after-market product and MAY require minor shimming and/or trimming, reaming, etc. for proper fit. Road Armor is not responsible for any damages to vehicle.

ⓘ IMPORTANT NOTICE

- Be sure to inspect and test fit your product to ensure proper fitment before having it coated, painted, bed lined, etc.
- Road Armor will not be responsible for the cost of coating your unit if any problems with fit or finish are not noted and addressed beforehand.

SAFETY FIRST!

- FOLLOW ALL INSTRUCTIONS, YOUR SAFETY AND THE SAFETY OF OTHERS IS MOST IMPORTANT.
- WEAR APPROPRIATE EYE PROTECTION AND EXERCISE CAUTION WHEN DRILLING / CUTTING

REQUIRED TOOLS

SAE & METRIC Socket set and wrenches

Screw drivers, pry tool, pick tool, pliers

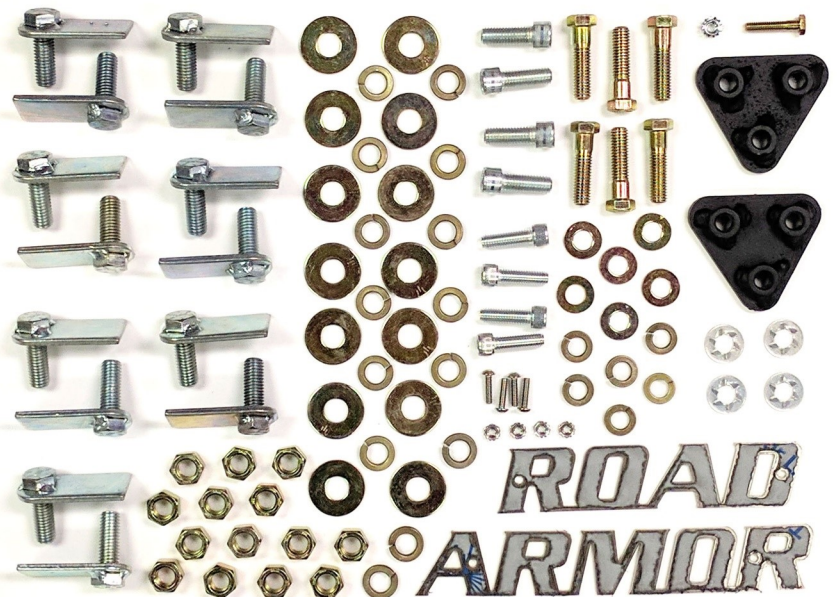
RECOMMENDED TOOLS

Adjustable Table Cart / Table/Pallet Lift or Hoist

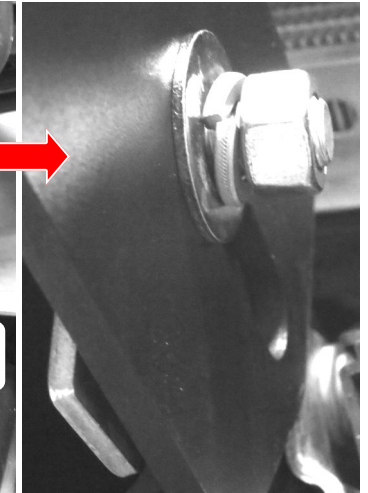
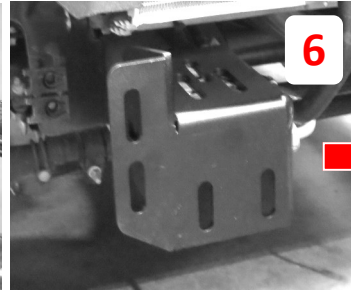
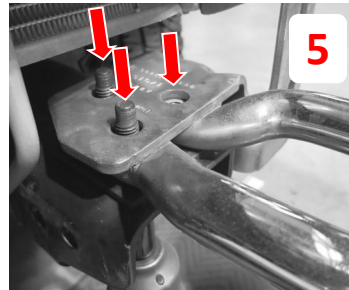
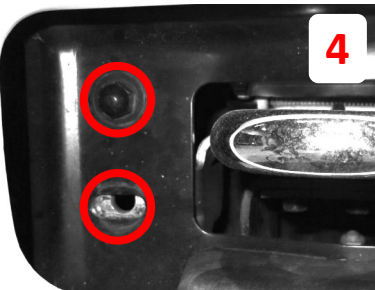
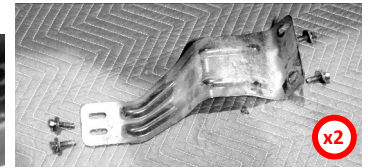
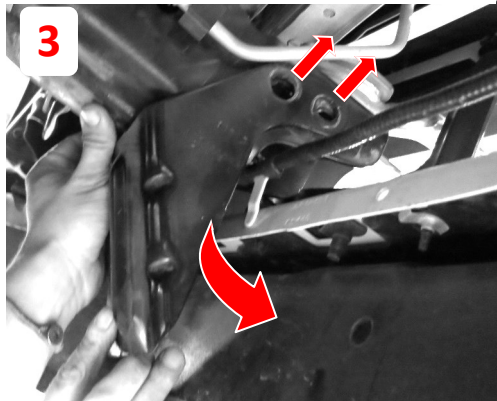
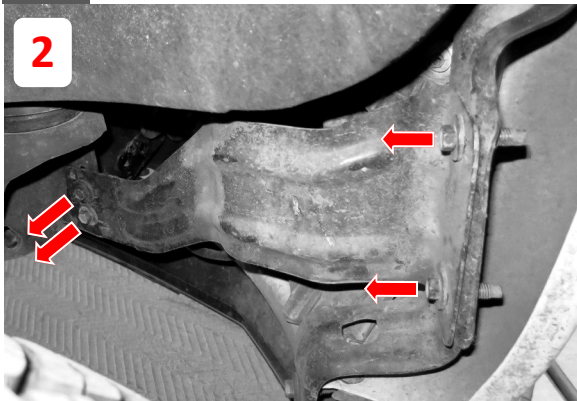
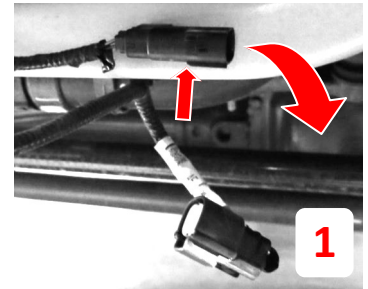
Impact driver

INCLUDED HARDWARE

- (14) 1/2" x 1.5" Grade 8 Bolt Plates
- (14) 1/2" Washers
- (14) 1/2" Lock Washers
- (14) 1/2" Hex Nuts
- (4) Keeper Washers
- (1) Winch and Logo Kit
- (6) 7/16" Bolts (6) 7/16" Washers
- (6) 7/16" Lock Washers
- (2) Triple Nut Plates
- (1) 1/4" Bolt and Lock Nut (608 Application Only)



- 1 Unplug bumper wiring harness from the body harness
- 2 Remove (4) 13mm bolts each side of outer bumper support gussets
- 3 Remove under-run guards from both frame rails (18mm bolts)
- 4 Remove bolts from front by each tow hook to remove bumper
- 5 Remove factory tow hooks both sides using 15mm socket

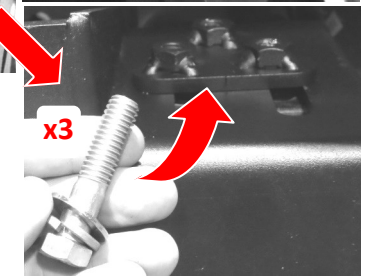


- 6 Fit up Road Armor bracket and bolt on using four single bolt tabs per bracket as shown

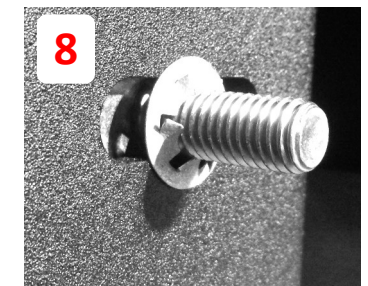
- 7 Place one of the triple nut plates on top of bracket and bolt down as shown. Do not fully tighten.



- 8 Insert one bolt tap through the bumper slot pointing outward and affix using the retainer clip. This is best achieved using a deep socket to press the retainer down over the threads.



- 9 Line up the bumper with the bracket inserting retained bolt through the bracket slot. Then install washer, lock washer, and nut but do not fully tighten.



- 10 Now install the remaining bolt tabs in the same fashion.

- 11 Once centered and satisfied with fitment tighten everything down. Bumper will have up, down, in, out and some rotational adjustment.

FINISHED