



# INSTALL INSTRUCTIONS

## VAQUERO FRONT BUMPER

Product : 615VF & 6181VF

Application : 2015-2019 Ford F-150

**( NON-WINCH )**

## I WARNING

Read the instructions completely before beginning installation. Before tightening bolts, drilling or cutting where required, check to make sure there are no obstructions such as brake, fuel or electrical lines which may be damaged. Also keep in mind this is an after-market product and MAY require minor shimming and/or trimming, reaming, etc. for proper fit. Road Armor is not responsible for any damages to vehicle.

## ⓘ IMPORTANT NOTICE

- Be sure to inspect and test fit your product to ensure proper fitment before having it coated, painted, bed lined, etc.
- Road Armor will not be responsible for the cost of coating your unit if any problems with fit or finish are not noted and addressed beforehand.
- This bumper does not accommodate front Sonar.

## SAFETY FIRST!

- FOLLOW ALL INSTRUCTIONS, YOUR SAFETY AND THE SAFETY OF OTHERS IS MOST IMPORTANT.
- WEAR APPROPRIATE EYE PROTECTION AND EXERCISE CAUTION WHEN DRILLING / CUTTING

## REQUIRED TOOLS

Metric and SAE Socket Sets and Wrenches

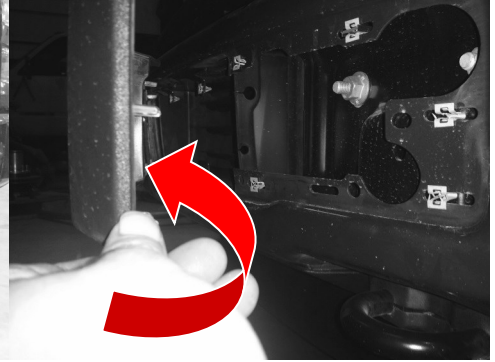
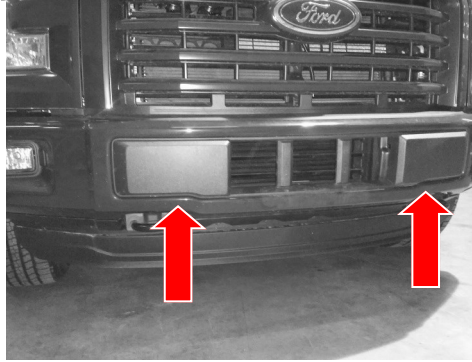
Small Pry Bar or Large Flathead Screwdriver

Needle Nose Pliers

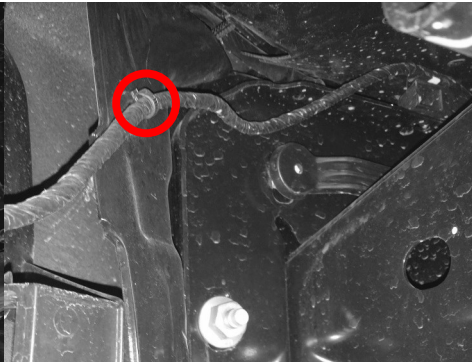
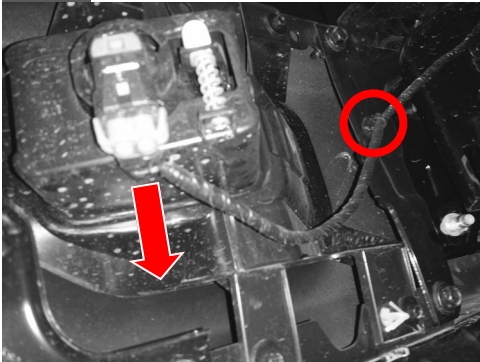
## INCLUDED HARDWARE

- 10 1.5" Bolt Tabs
- 10 1/2" Grade 8 Washers
- 10 1/2" Grade 8 Lock Washers
- 10 1/2" Grade 8 Nuts
- 12 #10-24 Stainless Steel Button Head Bolt
- 12 #10-24 Stainless Steel Keps Nut
- 8 3/8" x 1" HEX BOLTS
- 16 3/8" Washers
- 8 3/8" Lock Washers
- 8 3/8" Nuts
- 6 1/2" Retaining Washers

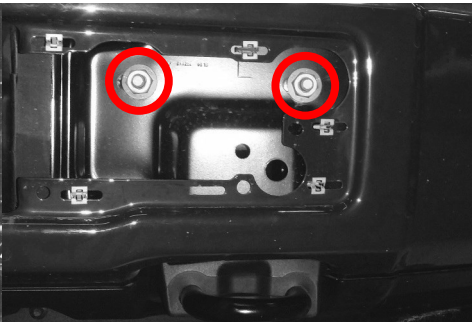
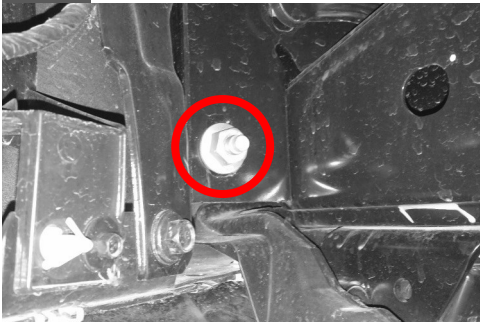
- 1** Remove the plastic cover from front of factory bumper to gain access to mounting bolts behind.



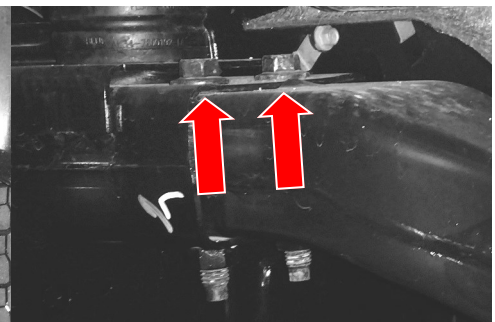
- 2** Disconnect Lights and Remove Wiring from Bumper.



- 3** Remove nut on backside of factory bumper on both sides.  
**4** Remove two (2) nuts per side where you removed the plastic cover.  
**5** Lower bumper and remove plastic push retainers from rubber piece.



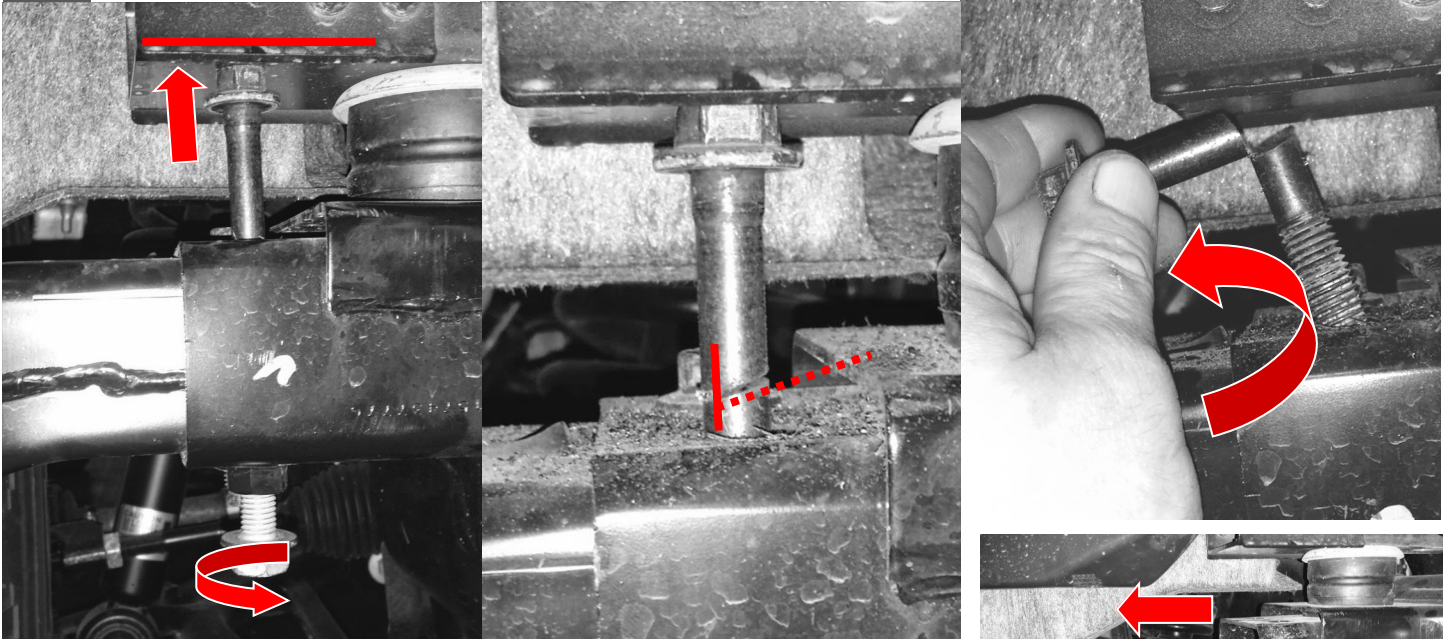
- 6** Remove factory tow hooks and \*Keep\* for reinstallation at later time.  
**7** Loosen frame extension bolts, two on each side.



**8** One at a time, thread the included silver flanged head bolt through the nut at the bottom to press the long frame extension bolt up against body to keep it from moving or spinning.

**9** Now, using a sawzall, hacksaw or cut off wheel, CAREFULLY cut the top bolt ALMOST all the way through.

**10** Bend and remove bolt.



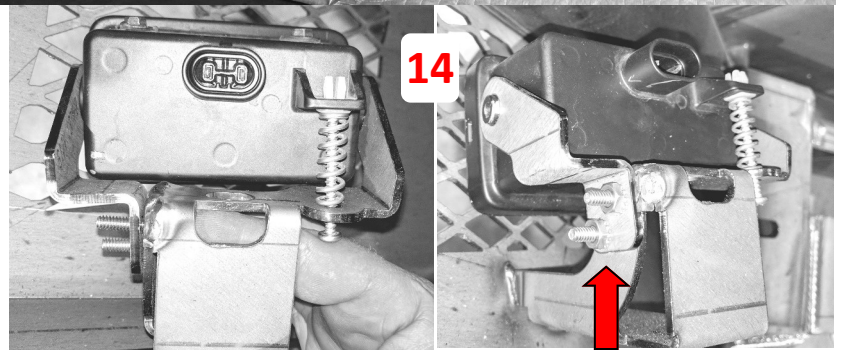
**11** Remove frame extension, it will be tight to get passed inner plastic part, don't get discourage, just use more force.

**12** Trim rubber from plastic are dam using razor blade or knife as shown and discard.

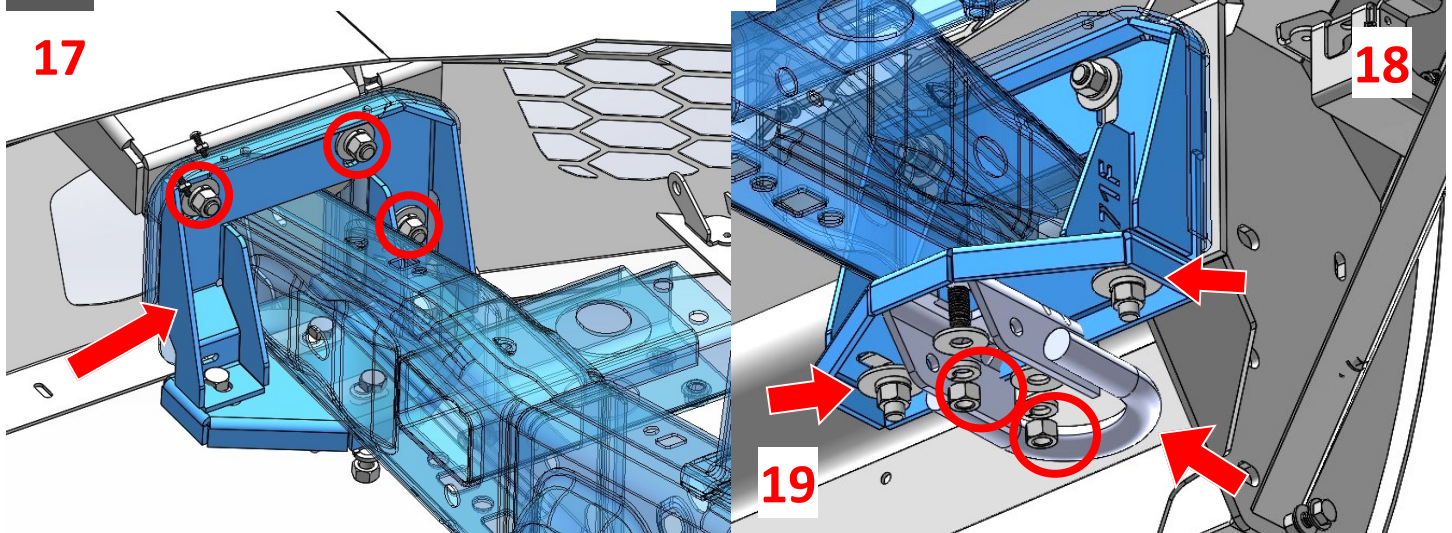
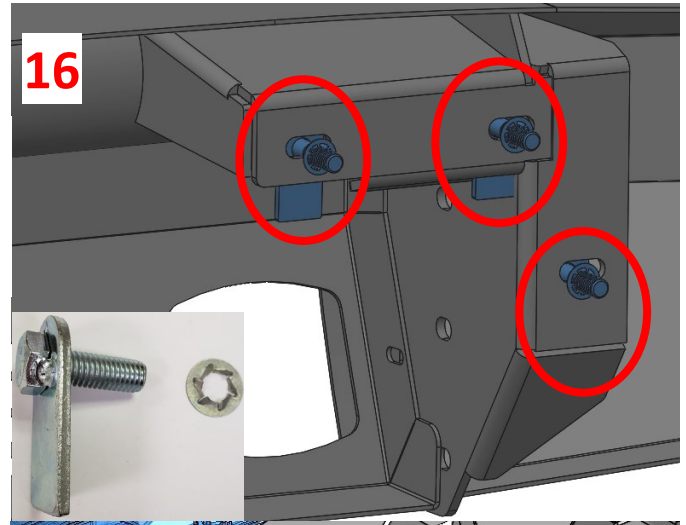


**13** Remove factory fog lights and reinstall them as shown. Use two 10-24 bolts and keps nuts to secure OE fog light and tab onto main

**14** Alternatively you can install an LED cube light instead of fog lights.



- 15** If your vehicle is not equipped with adaptive cruise control, install the cover plate in the bumper mesh using included 10-24 stainless steel hardware.
- 16** Install 6 - 1/2" bolt tabs and retainer washers into bumper.
- 17** Fit up the bumper to frame horns, followed by kit main stiffening bracket on backside of frame horns and affix with supplied 1/2" hardware.
- 18** Place 2 - 1/2" bolt tabs inside of each frame (factory tow hook location.) followed by lower stiffening bracket and tow hook on bottom of frame. Affix with supplied 1/2" hardware.



**\*\*NOTE\*\*** Tow hooks may require you to **MODIFIED / TRIMMED** to properly fit into kit lower stiffener brackets.

- 19** Install two kit 3/8" bolts, washers and nuts securing kit main stiffener bracket to kit lower stiffener bracket as shown above.
- 20** Once satisfied with fitment, headlight reveal and side to side, tighten all bumper hardware down.
- 21** Install 20" LED light bar (SOLD SEPARATELY), front license plate, etc... onto kit center plate.
- 22** Slide the center plate from the bottom up then bolt on using included 3/8" hardware and bolt to bumper uprights through the two vertically slotted holes on either side.

# Finished



**\*\*IF EQUIPED WITH ACM MODULE—KIT **618-ACM** IS AVAILBLE FOR PURCHASE TO RELOCATE UNIT\*\***