



Protecting Your Adventure Lifestyle

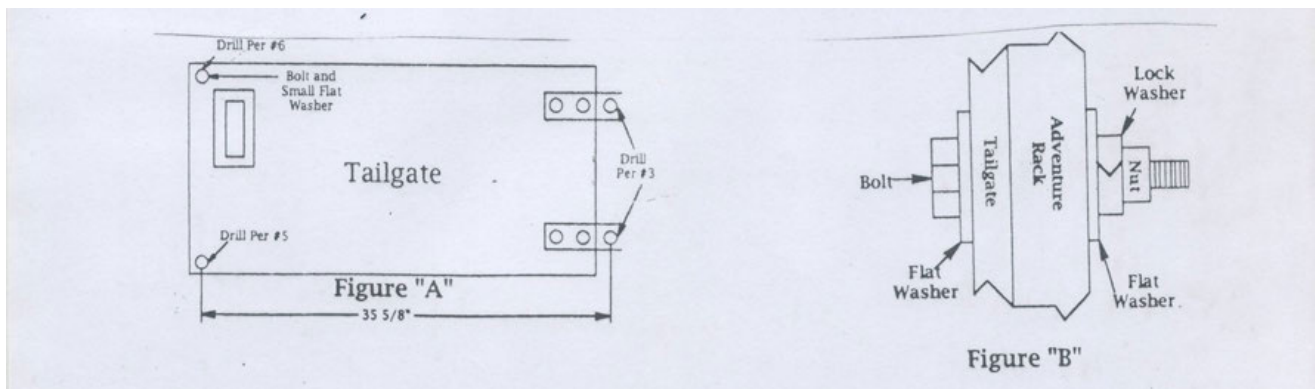
ADVENTURE RACK

INSTALLATION INSTRUCTIONS

WAR 834

(Note: Modification to the plastic hinge covers is required on 2004 & UP models)

1. Remove spare tire from the rear of the tailgate.
2. On the latch side of the tailgate (see figure "A") drill 3/8" hole 1/2" from the side & 1/2" from the bottom of the tailgate.
3. Drill second 3/8" hole 1/2" from the side and 14 3/8" from the bottom of the tailgate. (see figure "A")
4. Install driver's side leg. Bolts are installed from inside the tailgate pointing out. (see figure "B") Top bolt has a small flat washer next to bolt head (provided). Bottom bolt has large flat washer. Do not tighten bolts at this time.
5. On the passenger side, if the hinges have a plastic cover it either needs to be notched or removed entirely. In order for the bolt to be tightened, the leg needs to be flush against the metal. Open the tailgate and drill a 5/16" hole into both the upper and lower tailgate hinges, on the body side to the right of the tailgate. The holes should measure 35 7/16" from the center of the holes drilled in the tailgate for the driver's side leg. (see Figure A) Countersink inside of Hinge for tapered cap screw. Screw will point out. Only countersink deep enough so that tailgate will close. **Do not go too deep!** Some grinding of the hinge may be necessary so the bolt will sit flat and the tailgate will close.
6. Install passenger side leg onto the tailgate hinge (tailgate door must be open) using the tapered cap screws provided. Do not tighten the bolts at this time.
7. Install basket on top of the legs.
8. Install lower brackets to bottom of legs using quick release pins. Mark holes for drilling on the vehicle body where the bracket rests against the body.
9. Remove brackets and drill 1/8" hole where marked. Re-install bracket using quick release pins before securing brackets with self tapping screws.
10. Tighten all bolts and make sure the **Rack** is securely attached to the rear of the vehicle. If you have bolted the rack only to your tailgate, a 50lb. Weight limit is advised.



THANK YOU FOR PURCHASING WARRIOR PRODUCTS

Discover other roof racks and cargo carriers on our website.