



## Preparation:

- Disconnect the negative battery terminal. Park the vehicle on level ground and set the emergency brake.
- We recommend reading through the installation instructions in whole before performing the work.
- When button head bolts are being used, install the supplied washer on the nut side. Then, hold the bolt stationary and only turn the nut to tighten. Do not turn the bolt to tighten hardware assembly, unless otherwise noted.
- Estimated Installation Time: **2 Hours for OEM Removal/Bumper Installation**

### 1 Additional Hour Installing Winch Plate

**\*\*This installation requires 2 people for best results\*\***

**\*\*Labor Rates are based on a vehicle with no pre-existing damage. Wiring labor is based on a standard wiring procedure with light switches installed in an easily accessible location. Custom light triggering or switch mounting location will result in a greater labor charge.\*\***

## You will need the following tools:

- |                        |                        |                          |
|------------------------|------------------------|--------------------------|
| - Ratchet              | - 13mm Socket & Wrench | - 21mm Socket            |
| - 10mm Socket & Wrench | - 19mm Socket          | - Long Ratchet Extension |
| - 14mm Socket          | - Allen Head 7/32      |                          |

## Included in Kit:

- |                                       |  |
|---------------------------------------|--|
| 2 - Hex Head Bolt (5/16"-18 x 1")     | 2 - SAE Flat Washer (5/16")              |
| 2 - Nylon Lock Nut (5/16"-18)         | 4 - Spacers                              |
| 1 - Oil Cooler Relocation Bracket Top | 1 - Oil Cooler Relocation Bracket Bottom |

## Bumper Removal:

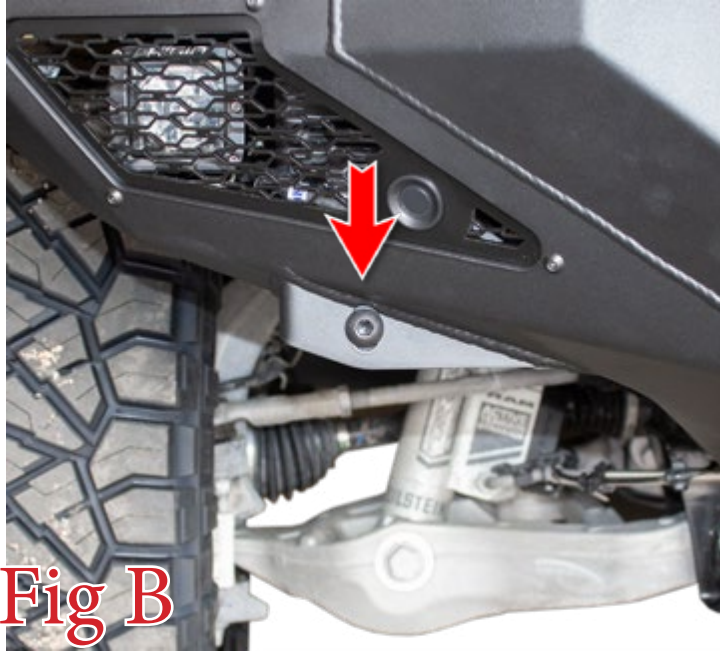
1. Disconnect the front bumper wiring harness from the TRX
2. Remove the lower skid plate mounting bolts. "Fig A"



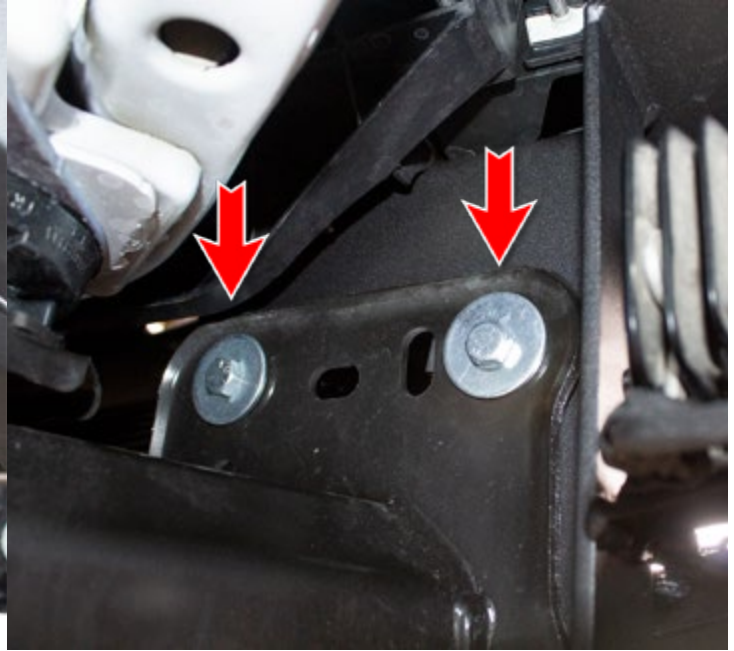


3. There are 3/8" Hex Head Bolts (2 per side) that need to be removed in the upper mounting holes. Then remove the Black 1/2" Bolts (1 per side). "Fig B"

**View From Front**

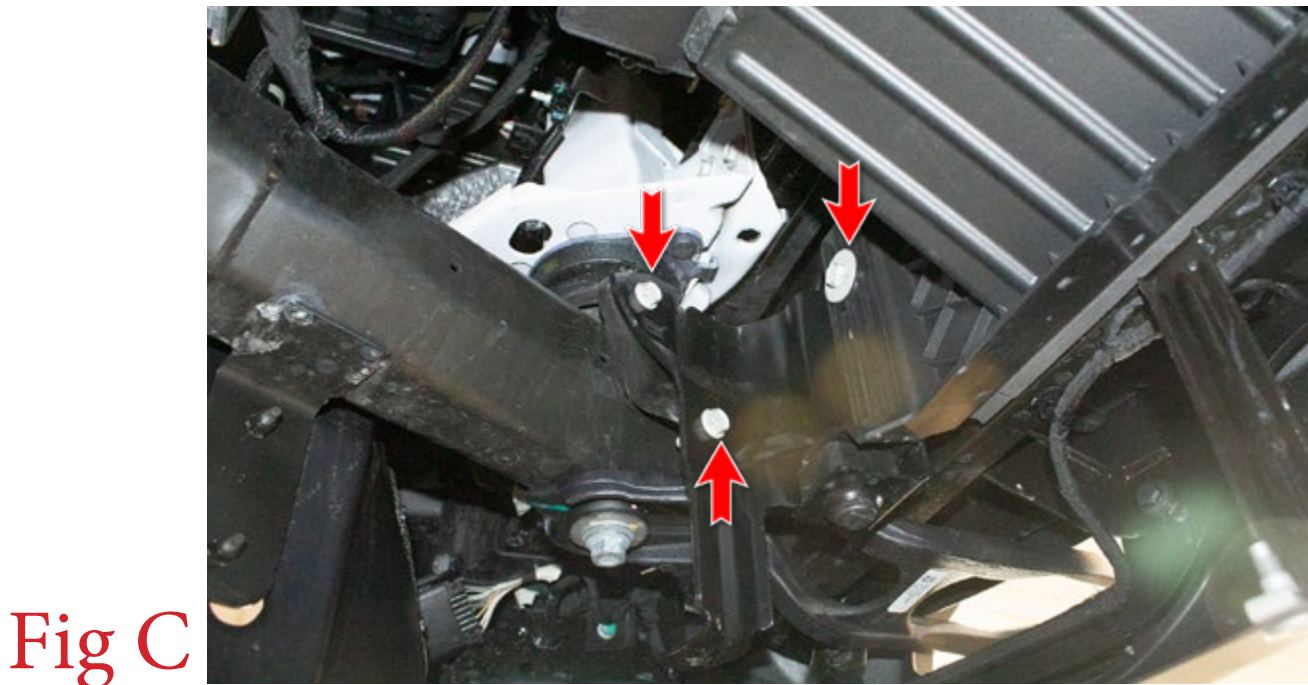


**View From Rear**



## Oil cooler relocation:

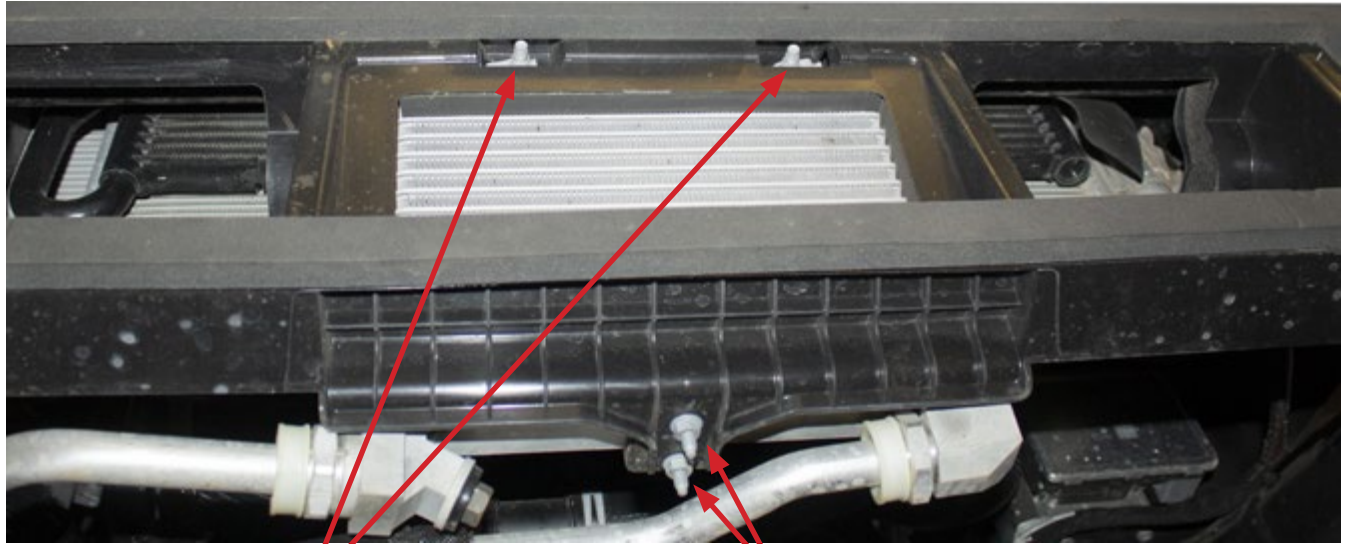
4. Using a 13mm Socket, remove the three bolts (per side) that hold the oil cooler to the vehicle. Then, zip tie the cooler to support it well removing the cooler from the plastic gaurd in the next step. "Fig C"





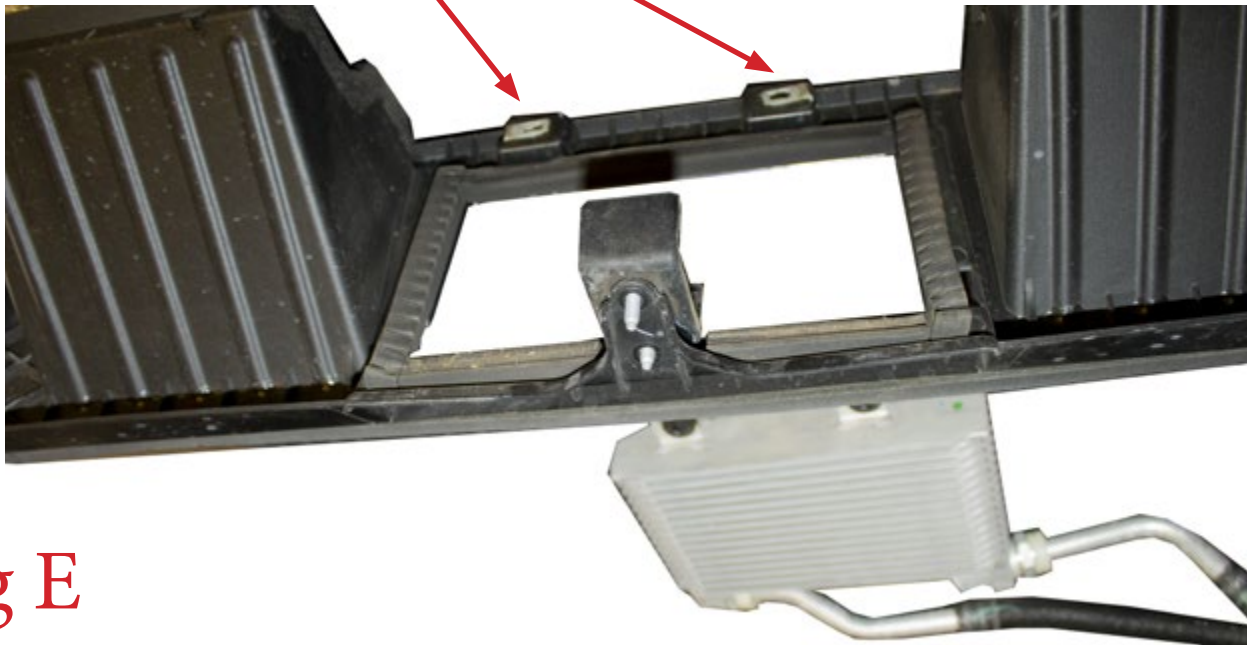


5. Once the Oil cooler guard has been separated from the bracket, you will gain access to the 2 top bolts (13mm) that hold the oil cooler in the guard. The last thing that holds the oil cooler in place are the 2 (10mm) bolts that need to be removed. "Fig E"



**13mm bolts**

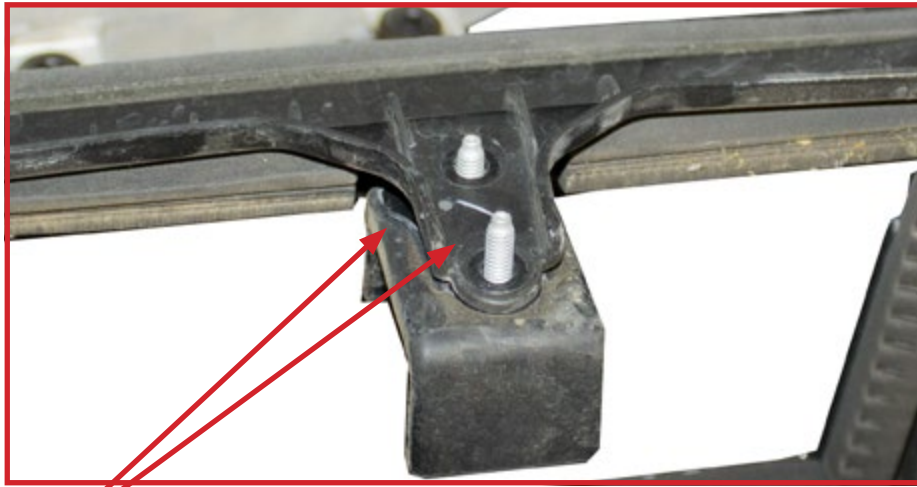
**10mm bolts**



**Fig E**



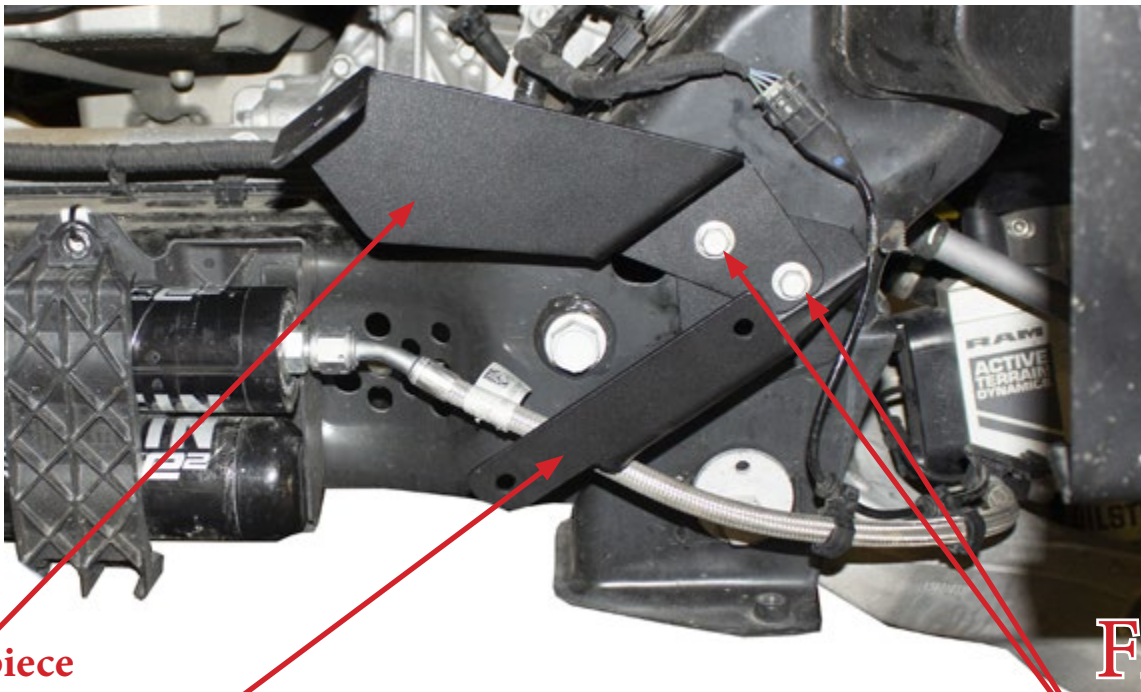
6. After the oil-cooler has been removed from the guard you will separate the rubber clamp that was held in by the 2 (10mm) bolts as this part will be used on the new relocation bracket. "Fig F"



Separate the rubber clamp from bracket

Fig F

7. Install relocation bracket on the TRX using the bolts set aside from step 2 (**leave loose**). As shown below there are 2 pieces used to create this relocation bracket, the (bottom piece) is first put in place, then the (top piece) goes over the bottom. "Fig G" (**When installing leave bolts loose to get the oil cooler in place.**)



Top piece

Bottom piece

Reuse the bolts from step 2

Fig G



8. Well the bolts that hold the bracket are loose set the oil-cooler in place as shown below. Use the provided hardware to mount the bottom of the oil-cooler to the bracket. Then you will use the rubber clamp from step 6 to mount the oil-cooler to the bracket then re-install the 2 (10mm) bolts. **"Fig H" (After the oil-cooler has been tightened down on the bracket, tighten the bracket to the frame)**



**Re-install 2 (10mm)  
bolts**

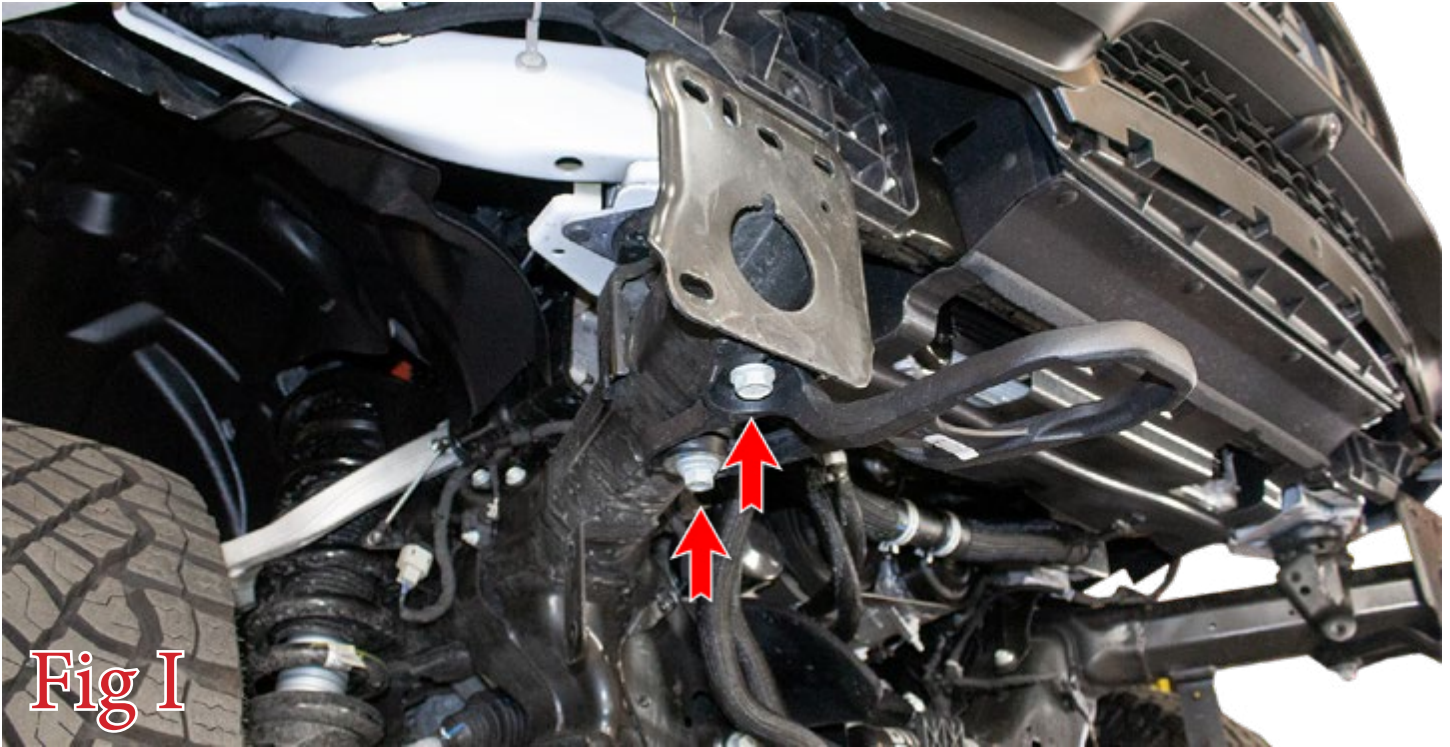
**Provided (5/16's)  
hardware**

**Fig H**





9. Use an 18mm and 21mm Socket to remove the two tow hook mounting bolts (per hook). Then remove the tow hooks from the vehicle. "Fig I"



10. Set winch in plate. "Fig J"(Make sure the winch is faced in the orientation as shown below where the rope comes from the bottom out)

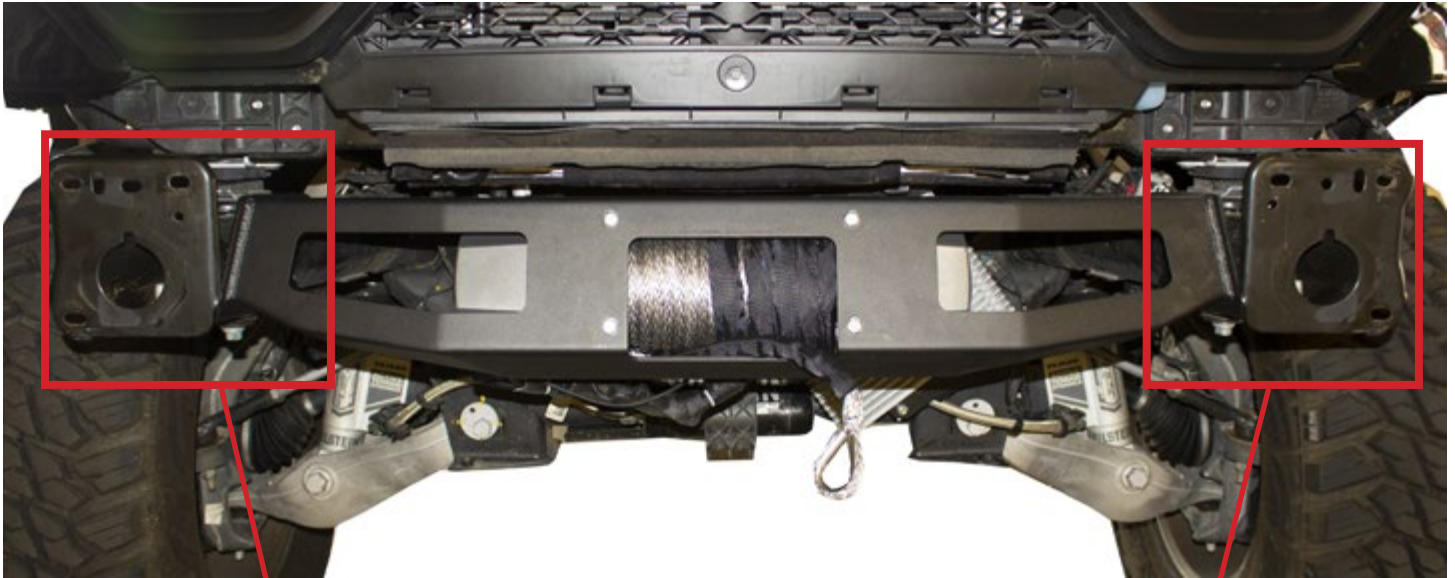


**Rope comes out from the bottom**

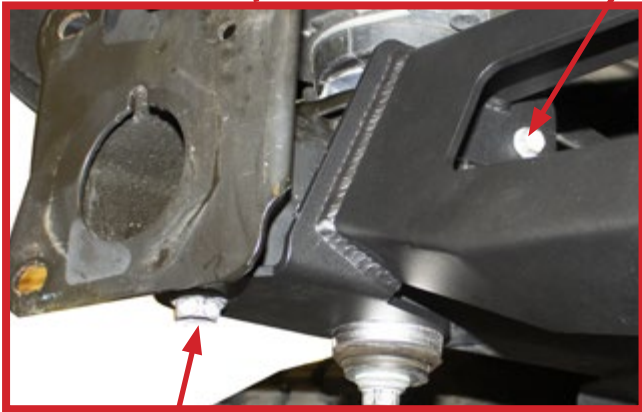
Fig J



11. Set winch plate in between the frame horns as shown below, you will use the OEM 21mm bolts from step 3 to bolt the winch plate to the bottom of the frame, then use the 4 OEM (13mm) bolts from step one to bolt the winch plate to the sides of the frame. "Fig K"



13mm bolts



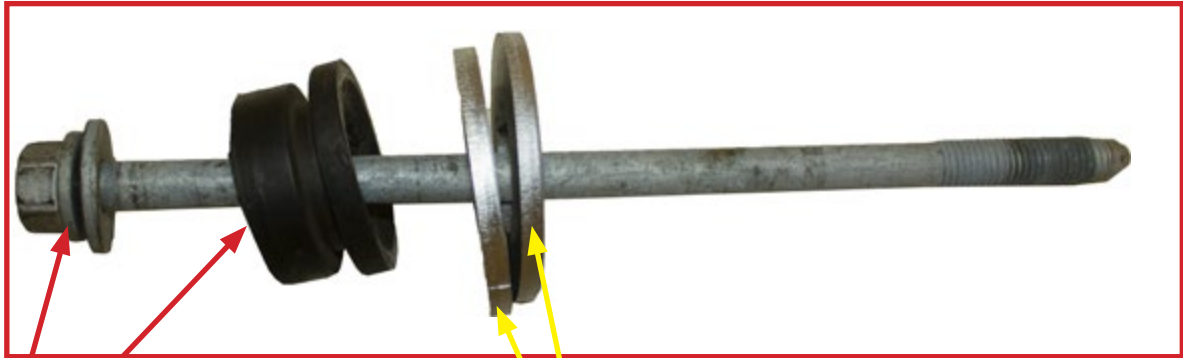
21mm bolts



Fig K

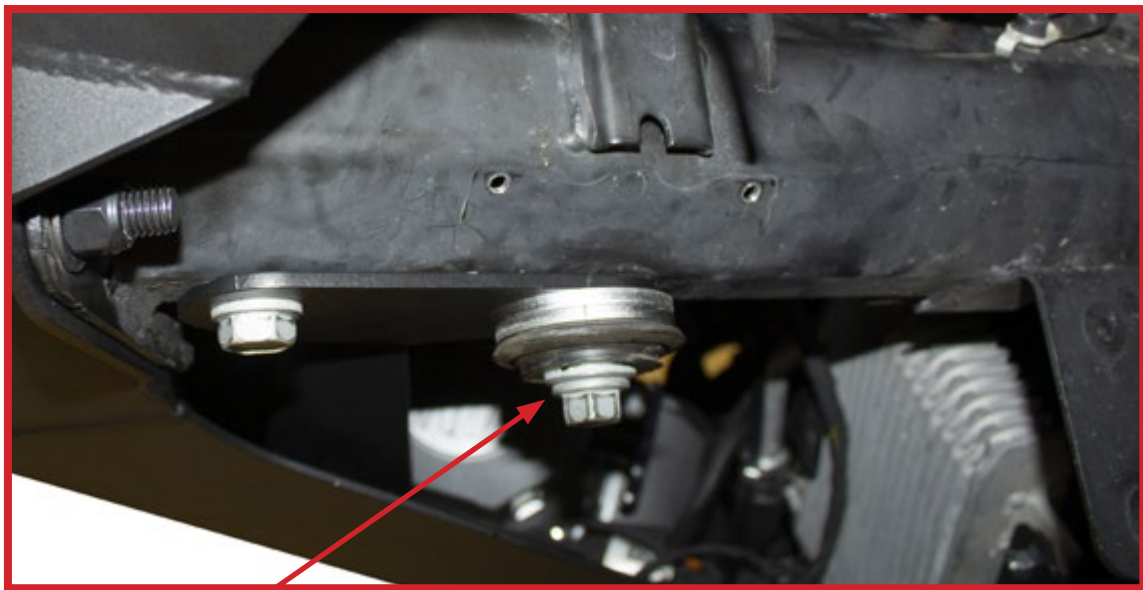


12. There are 4 provided spacers that will go on the body mount bolts from step 3 that will be reinstalled. Each body mount bolt will use 2 spacers as shown below. "Fig L"



OEM bolt and rubber spacer

2 provided spacers



Install body mount bolt on both sides

Fig L





13. Switch out the Stealth Fighter plate to install the new winch plate. The plate is held in place by (10) button head bolts. "Fig M" (Now is a good time to install the fairlead)

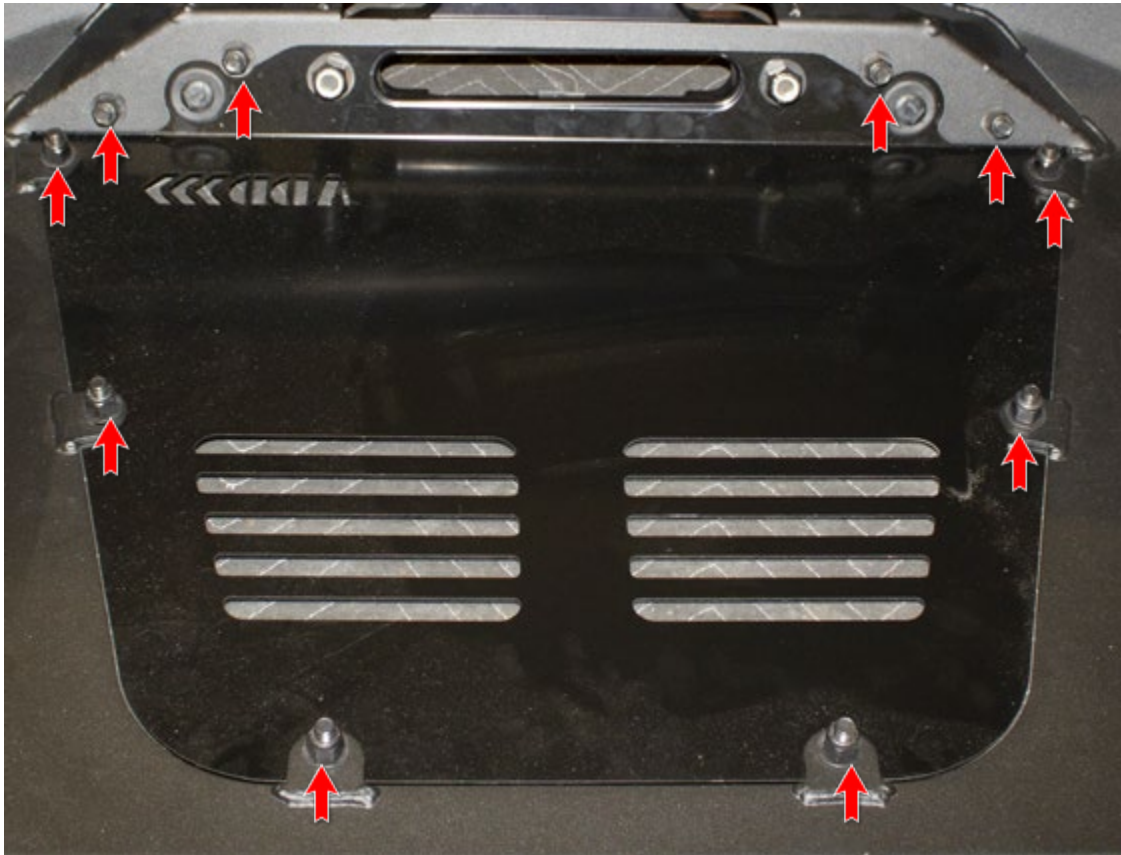


Fig M



14. After the plate has been switched out you can now install the ADD Stealth Fighter bumper on the TRX. **(Make sure the winch cable runs through the fairlead before the bumper is installed)**
15. Stand back and enjoy your new ADD Stealth Fighter™ Winch Plate.
16. Check and re-tighten, if needed, all mounting bolts after 100 miles and periodically thereafter.

