



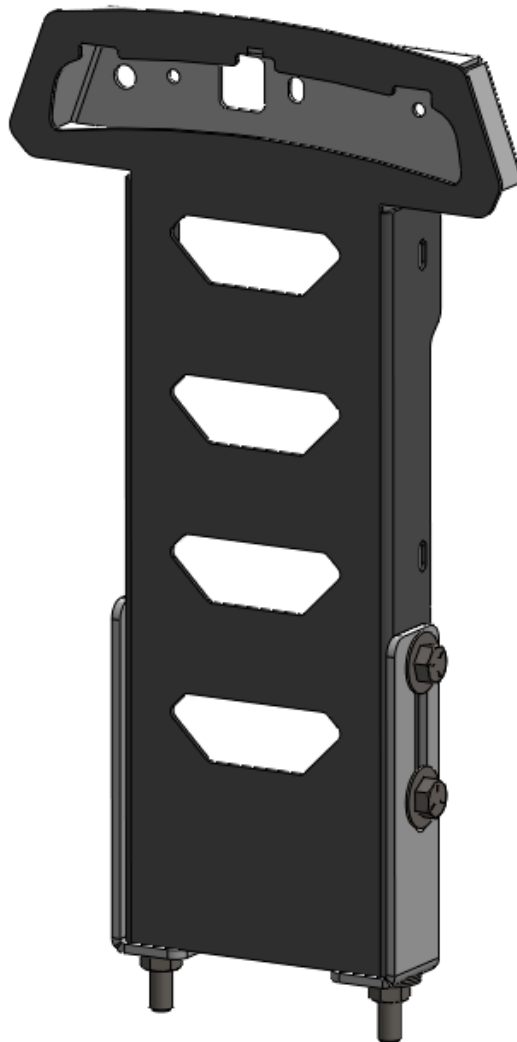
*DESTROYER SERIES*

**BRONCO**

2021 BRONCO  
3RD BRAKE LIGHT MOUNT



**\*VERIFY YOU HAVE ALL THE COMPONENTS BEFORE STARTING THE INSTALLATION. REFER TO THE ENGINEERING DRAWINGS AT THE END OF THIS DOCUMENT FOR A COMPLETE PARTS LIST\***

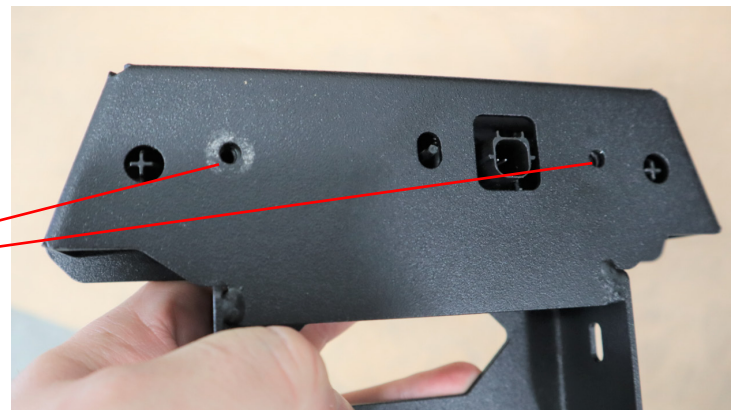


Start by removing the 3rd Brake Light from your stock tire carrier.

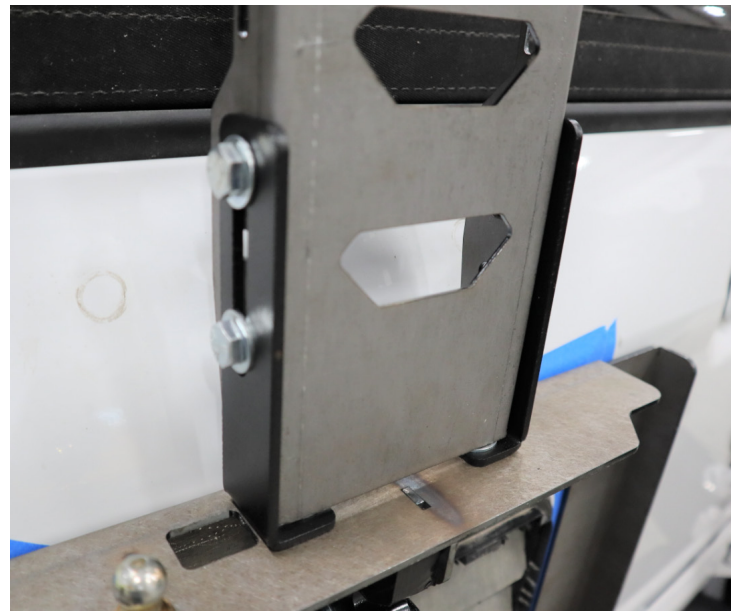


Place the 3rd Brake Light into your new Brake Light Mount as shown and secure using the stock screws.

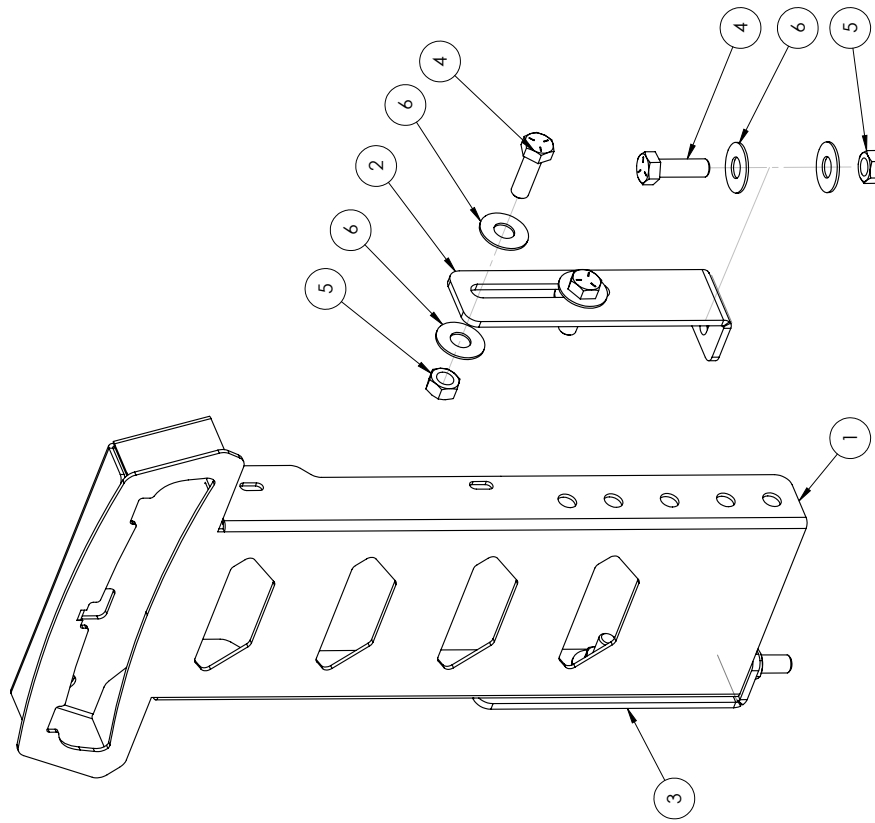
Secure using stock screws here



Install the 3rd Brake Light Mount onto the Door Plate using the provided hex bolts, nuts and washers as shown.



ITEM NO.	PART NUMBER	DESCRIPTION	QTY.
1	4BBL2100-01	BRONCO 3RD BRAKE LIGHT MOUNT	1
2	2JTC1001-49	PASSENGER SIDE BRACKET	1
3	2JTC1001-48	DRIVER SIDE BRACKET	1
4	HB311816ZPGR5	HEX BOLT 5/16-18 X 1.00 ZINC PLATE GR5	6
5	HN3118ZPGR5	HEX NUT 5/16-18 ZINC PLATE GR5	6
6	FW3114ZP	FLAT WASHER Ø5/16" X .875" ZINC PLATE	12



- NOTES:**
1. BBL2100 = BARE STEEL OPTION
  2. BBL2101 = BLACK POWDER COAT
  3. WEIGHT = APPROX 3 LBS

UNLESS OTHERWISE SPECIFIED:	NAME	DATE	
DIMENSIONS ARE IN INCHES	MCH	6/7/2022	
ANGULAR DIMENSIONS	DRAWN		
ANGULAR TOLERANCE	CHECKED		
TWO PLACE DECIMAL ±0.015	ENG APPR.		LOD LLC.
THREE PLACE DECIMAL ±0.005	MEG APPR.		DESCRIPTION:
<b>PROPRIETARY AND CONFIDENTIAL</b>	MATERIAL:		2021 BRONCO 3RD BRAKE LIGHT MOUNT
THE INFORMATION CONTAINED IN THIS DRAWING IS THE SOLE PROPERTY OF LOD LLC. ANY REPRODUCTION OR TRANSMISSION OF THIS DRAWING WITHOUT THE WRITTEN PERMISSION OF LOD LLC IS PROHIBITED.	FINISH:		DWG. NO. BBL2100
	SEE NOTES		BBL2101
	ECCO:		SCALE: 1:2
			SHEET SIZE: B
			REV
			A
			SHEET 1 OF 1



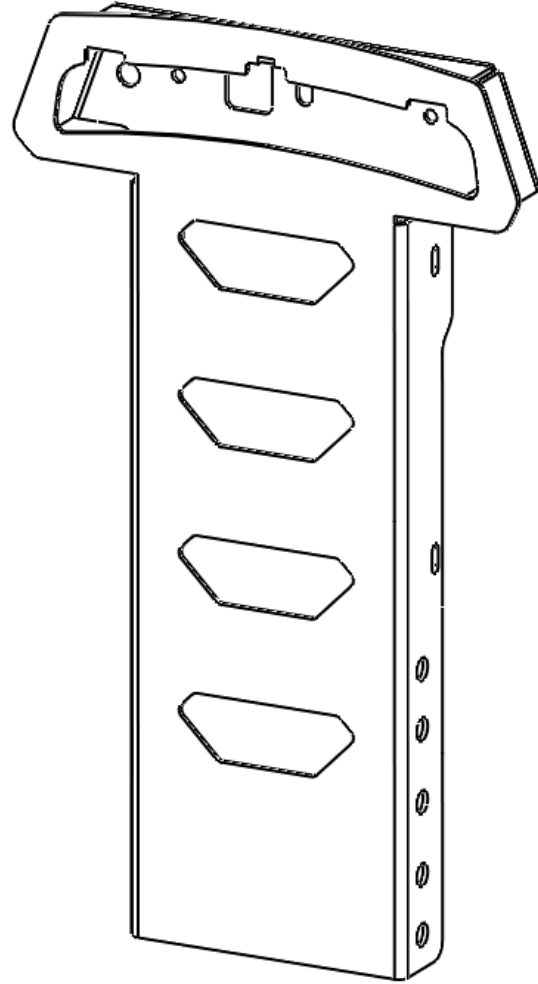
**2021 BRONCO  
DESTROYER SERIES**  
3rd BRAKE LIGHT MOUNT  
SHIPPING SHEET

Packaged by:

\_\_\_\_\_

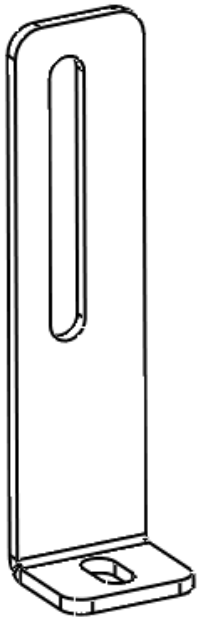
On:

\_\_\_\_\_



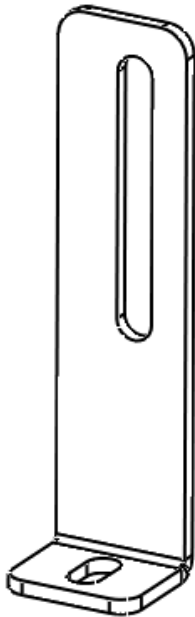
BRONCO 3RD BRAKE LIGHT MOUNT  
4BBL2100-01

**(x1)**



PS SIDE BRACKET  
2JTC1001-49

**(x1)**



DS SIDE BRACKET  
2JTC1001-48

**(x1)**





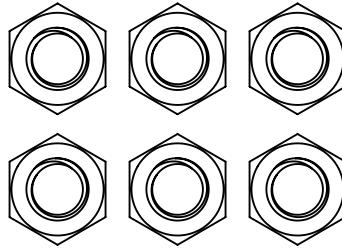
**2021 BRONCO  
DESTROYER SERIES  
3rd BRAKE LIGHT MOUNT  
BOLT KIT**

Packaged by:

\_\_\_\_\_

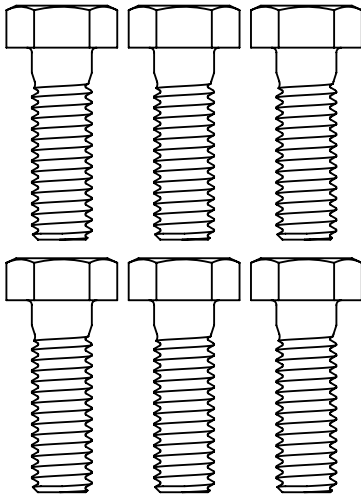
On:

\_\_\_\_\_



HEX NUT 5/16-18  
(1136304)

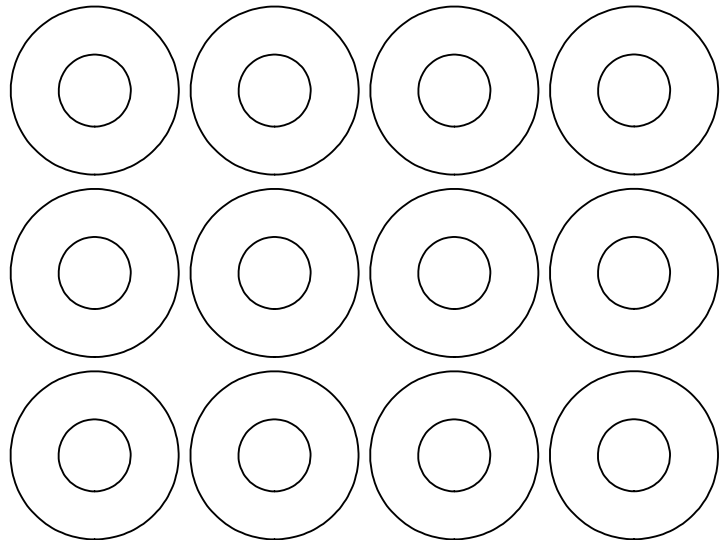
**(x6)**



HEX BOLT 5/16-18 X 1.00"

(13055)

**(x6)**



FLAT WASHER

Ø5/16" X .875"

(1133006)

**(x12)**

