

## Preparation:

- Disconnect the negative battery terminal. Park the vehicle on level ground and set the emergency brake.
- We recommend reading through the installation instructions in whole before performing the work.
- When button head bolts are being used, install the supplied washer on the nut side. Then, hold the bolt stationary and only turn the nut to tighten. Do not turn the bolt to tighten hardware assembly, unless otherwise noted.
- Estimated Installation Time: **2 Hours for Rack Installation**

### Any Accessories Will Add Extra Install Time

***\*\*This installation requires 2 people for best results\*\****

***\*\*Labor Rates are based on a vehicle with no pre-existing damage. Wiring labor is based on a standard wiring procedure with light switches installed in an easily accessible location. Custom light triggering or switch mounting location will result in a greater labor charge.\*\****

## You will need the following tools:

- |                             |                               |               |
|-----------------------------|-------------------------------|---------------|
| - Ratchet                   | - 5/16" Allen Wrench & Socket | - 3/4" Wrench |
| - 7/32" Allen Wrench/Socket | - 9/16" Socket & Wrench       |               |

## Included in Kit:

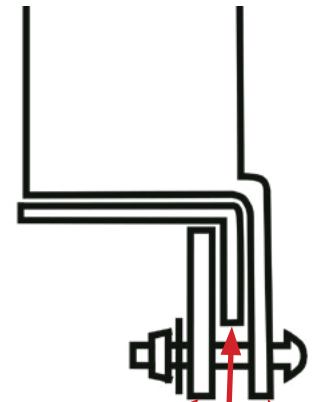
- |           |  |           |                                    |
|-----------|--|-----------|------------------------------------|
| <b>12</b> | - Button Head Bolts (1/2"-13 x 1 1/2") | <b>12</b> | - Flat Washers (1/2")              |
| <b>12</b> | - Nylon Lock Nuts (1/2"-13)            | <b>48</b> | - Button Head Bolts (3/8"-16 x 1") |
| <b>48</b> | - Flat Washers (3/8")                  | <b>48</b> | - Nylon Lock Nuts (3/8"-16)        |
| <b>4</b>  | - Backer Plates (3 hole)               | <b>4</b>  | - Backer Plates (4 hole)           |

## Installation:

1. Find one of the supplied overland rack side pieces. (Fig A)

Put that piece in place on the vehicle. Use the backer plates (x2) and the supplied 1/2" Bolts (x6), 1/2" Washers (x6) and 1/2" Lock Nuts (x6) to secure it to the vehicle. You will sandwich the truck's bed rail lip between the chase rack and the backer plate. You will need a 5/16" Allen Wrench/Socket and a 3/4" Wrench for this step.

**Tighten these bolts enough to hold the side piece up on its own, but do not tighten them fully yet.**



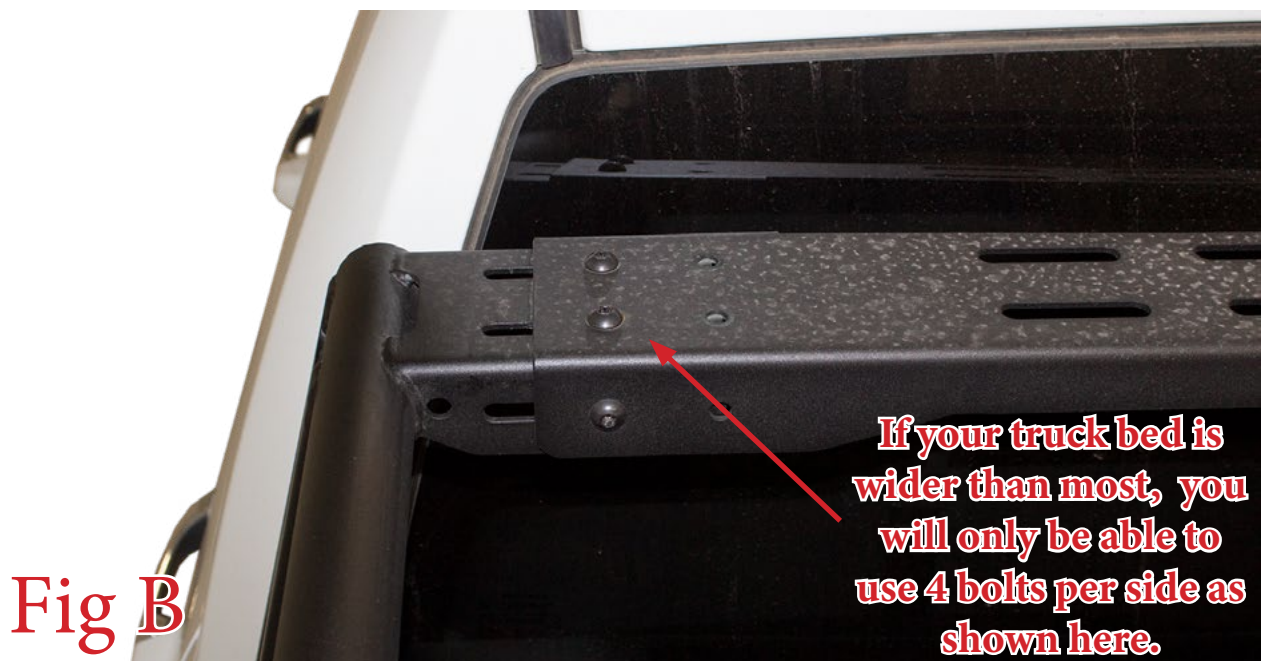
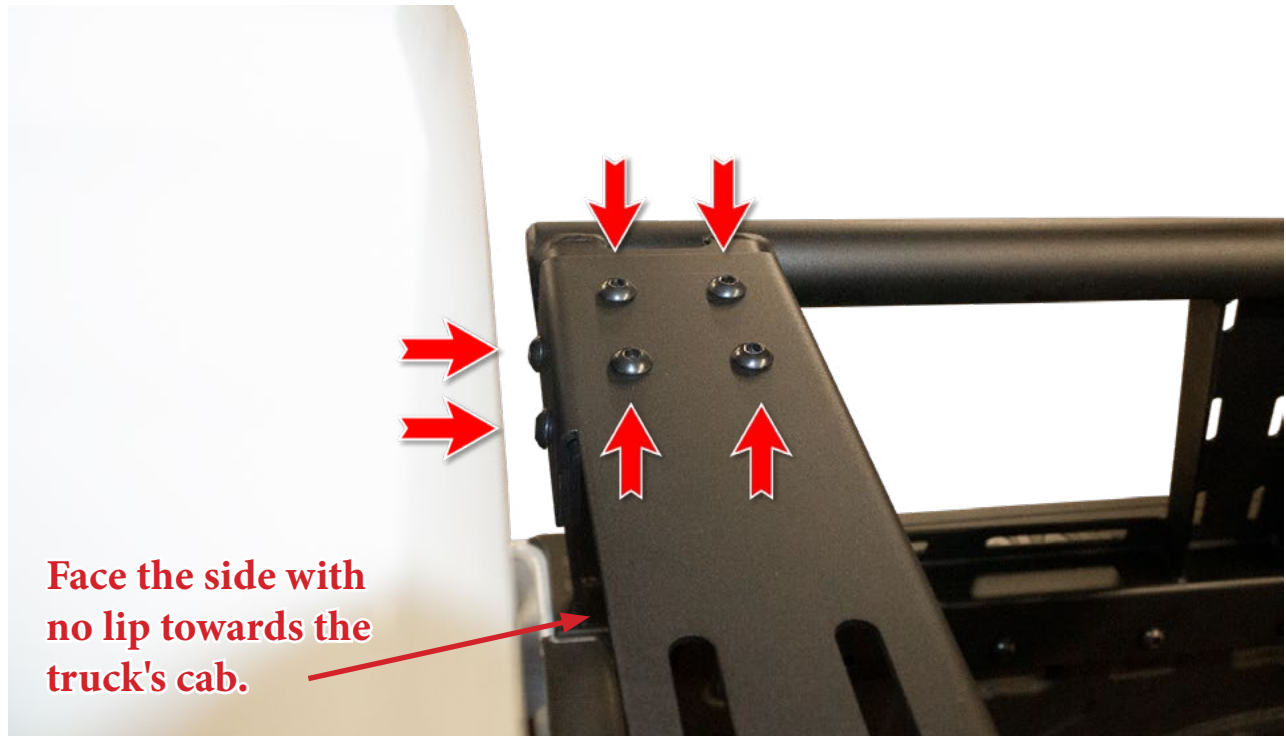
**Backer Plate**   **Bed Rail Lip**   **Rack**



**Fig A**

2. Repeat Step 1 with the other side piece.
3. Set the first cross member in place. Use the cross member that does not have a front lip closest to the front of the truck. Face the edge that does not have a lip towards the cab of the truck. Then, install the supplied 3/8" Bolts (4 per side), 3/8" Washers (8 per side) and 3/8" Lock Nuts (8 per side). Leave these bolts loose for now. (Fig B)

Some trucks may not be able to use all 8 bolts per side due to the width of the bed in the front (Ram trucks will only use 4 bolts per side in the front cross member, but will be able to use all of the bolts in the middle and rear cross members since the bed width is tapered).



4. Repeat Step 3 with the remaining two cross members. Make sure all bolts are loosely installed.
5. Once all bolts have been installed, go back and tighten the 1/2" side piece mounting bolts to 70 foot pounds. Then, go back and tighten the remaining 3/8" mounting bolts to 30 foot pounds.
6. Stand back and enjoy your new ADDLander™ Overland Rack.
7. Check and re-tighten, if needed, all mounting bolts after 100 miles and periodically thereafter.

