

INSTALLATION GUIDE

Front Bumper



First, we'll start by removing the small allen bolts from the inside fender wells that hold the stock front bumper in place.

FIG 1A



FIG 1B

You will also need to remove the bottom skid bolts shown in Fig 1B in order to remove the stock skid plate.



FIG 1C

Next, we'll be opening up the hood and removing the top grille plastic cover shown in Fig 1C which are held in by a few plastic pieces.



We'll also need to pull the inner fender liner back (Fig 2A) to undo all the clips and any small bolts that may be attached to the inside of bumper.



FIG 2A

FIG 2B

There are also a few bolts in the front of the lower fascia (see Fig 2C) that also need to be removed.

*NOTE - Make sure to keep all stock bumper bolts as some will be reused later in the install



At this stage, you should be able to pull the stock front bumper off the frame of vehicle.



FIG 3A

Next, we need to remove the inner plastic skeleton (Fig 3B).

When taking clips out as shown above, you may have to simply break the clips and pull the plastic piece off as these won't be used anyways.



FIG 3B

You will also need to remove a few bolts underneath to remove the large plastic skeleton piece.



FIG 3C

Our next step is to remove the metal impact frame by unbolting the bolts that hold it onto the vehicle (Fig 3C)

FIG 4A



FIG 4B



FIG 4C

Next, we'll need to remove the stock shackle mounts on each side (Fig 4C)



FIG 5A

Our next step is to remove the front grille from the rest of the stock bumper that was removed earlier.

There are a couple of plastic tabs that need to be pryed with a flat screwdriver or similar tool. See Fig 5A & 5B.

Grille will be placed back onto the vehicle once the new bumper is secured to vehicle.



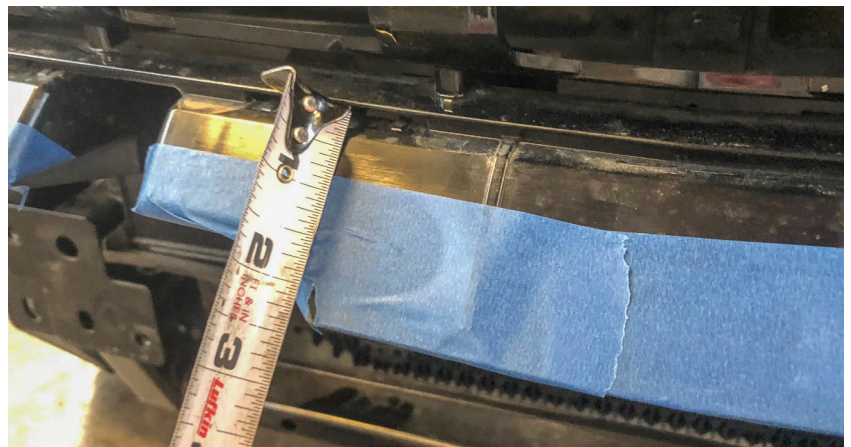
FIG 5B

Once grille is removed from the stock bumper, you'll need to do a bit of trimming on the bottom portion. Grille shown in Fig 5B is on the vehicle but can be done on a table or on the ground which is recommended.



FIG 5C

Fig 5C we added masking tape and measured out to roughly 3/4" to 1" for the main bottom portion and then will need to be angled up for the corner portions to rough dimensions shown in photo.



Next, we'll be cutting some of the plastic mounting brackets underneath the grille (Fig 6A). The green line shows roughly where you'll need to cut once you finish cutting the top portion shown on previous page. This will allow the winch to clear the grille should or when you add a winch to your new bumper.

FIG 6A

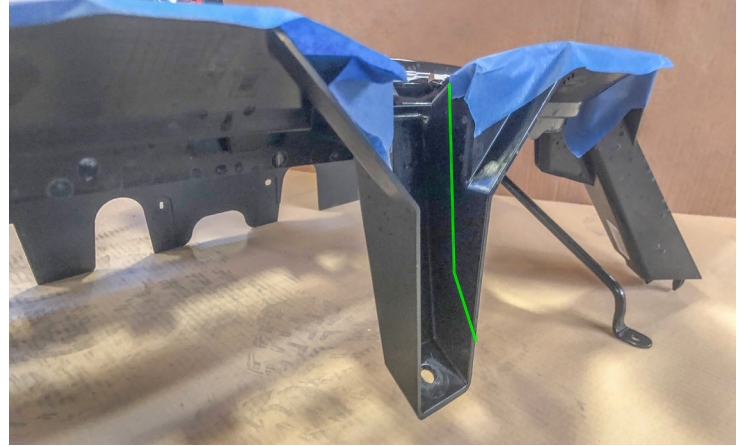
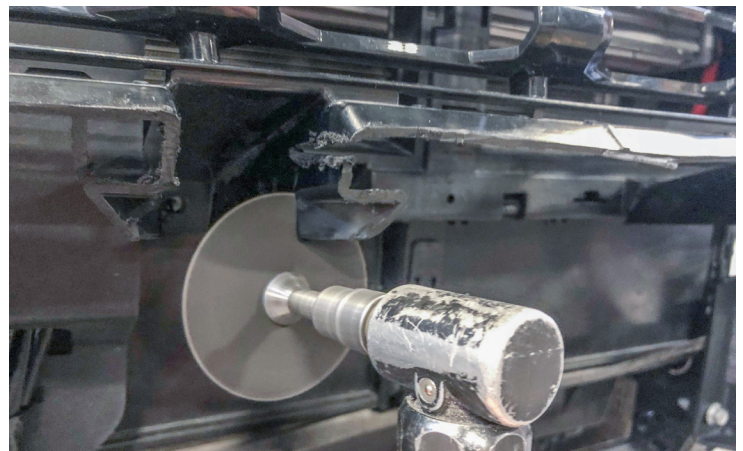


FIG 6B

Shown in Fig 6B provides a different perspective of what is being cut from the bottom grille mounts. Green lines indicate where you will roughly be cutting off from the grille mount pieces.



FIG 6C



You will also need to cut a small portion off the plastic piece (Fig 7A) on the front of vehicle that sits just below the grille. Cut this portion off on both sides.

Cutting this portion will help clear the bumper when it mounts to vehicle frame mounts.

At this stage, we recommend mounting the grille back onto the vehicle and tightened down with the stock bolts that you removed for it.

Next, we'll be attaching the new frame mount brackets to the vehicle. You'll want to place each bolt in from the front, making sure to add the provided mount spacers that are highlighted in Fig 7B. You will also be reusing some of your stock bumper frame bolts for the center bolts shown in Fig 7B and on the bottom inner part of brackets shown in Fig 7C.

Keep these bolts snug but fairly loose to make any needed adjustments when the bumper is on for proper fitment.

FIG 7A



FIG 7B

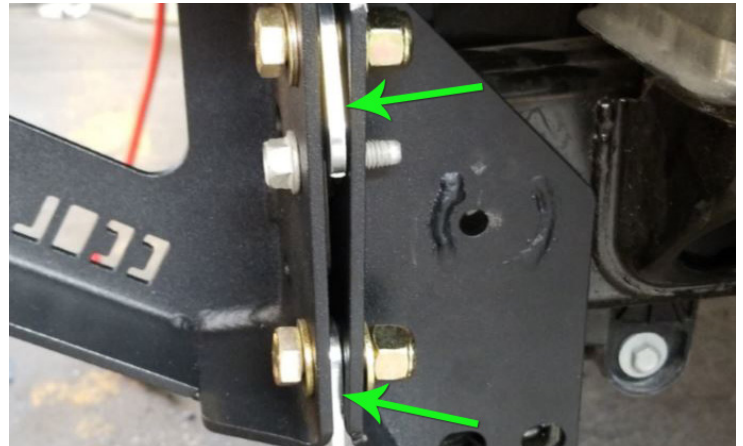


FIG 7C

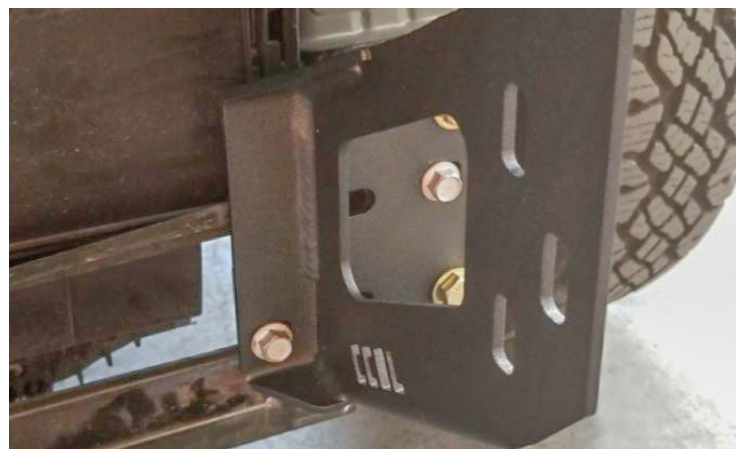


FIG 8A



FIG 8B



Now that we have the vehicle prepped for the bumper, we need to do some mild trimming of the front wheel fenders. (Fig 8B)

Start by masking off the fender to match the body 'line' of the vehicle and follow it across the fender.

Once complete, use a sharp blade (we heated the blade tip to help it slice better) to carefully cut a straight line following the edge of the masking tape.

Final result shown in Fig 9A on next page.

We also recommend cleaning up the cut marks by trimming/ cleaning any rough edges or debris (Fig 9B)

Your now ready to position your Expedition One bumper!

*Note - If you have a winch that will be going in the bumper, we recommend you pre-install that now before the bumper goes onto the vehicle. Any port lights can optionally be installed as well although you have room to install them later if needed.

With the help of a friend, carefully place the bumper onto the frame brackets and each person checking for proper spacing with the vehicle body lines.

See Fig 8A on next page for side profile look at how your spacing should roughly be with the vehicle.

We highly recommend you have spacing anywhere from a minimum of a 1/4" to 1" in gap. This depends on how much abuse and off-roading you put your vehicle through which may require the bumper to have more of a gap to allow for any flexing on the trails to prevent rubbing or hitting of the vehicle's body.

Once your happy with alignment and spacing, have one person crawl underneath the bumper and begin placing all the bolts that attach the bumper to the frame brackets. (Make sure someone is holding the bumper in place while doing so) Secure with provided nuts and washers and tighten with socket wrench.

FIG 9A



FIG 9B

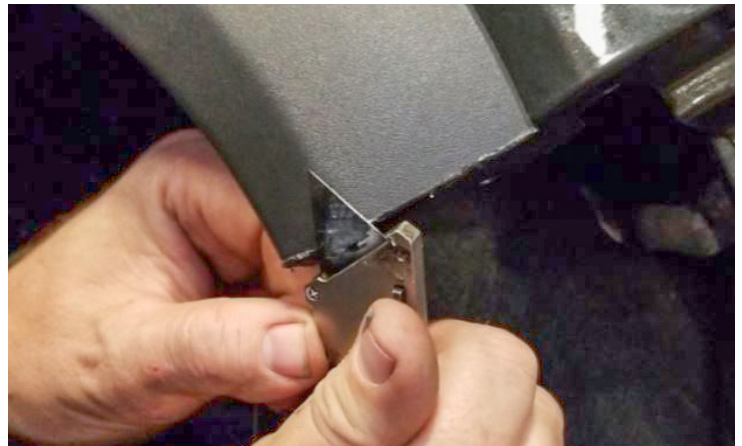


FIG 9C



FIG 10A



Your vehicle should now have a newly installed Expedition One bumper!

We recommend checking all bolts and nuts one last time to make sure everything is secure on the vehicle.

Have any questions or feedback? Send us an email at info@expeditionone.biz

