

# INSTALLATION GUIDE

CHEVROLET SILVERADO 2016



# CONTENTS

Front Bumper Installation ..... 2

## Disclaimer

Expedition One is not responsible for any damages to vehicle.  
We always recommend professional assistance when  
installing our vehicle products.



Included Hardware:

- (18) 1/2" Bolts
- (12) 1/2" Locking Nuts
- (30) 1/2" Washers
- (3) Single Nut Retainers

Tools:

- 3/4" wrench and socket

Skill Level:

- 4/5 stars (Professional install recommended)

### Stock Parts Removal

Begin by removing the plastic pins as shown around the top engine cover.



### Remove Front Grill

Remove bolts that hold grille in place as seen in the photo to remove front grille piece



### Remove Front Grille (continued)

Once bolts are removed, begin tugging and pulling off the grille until it comes off.



Front Bumper Removal

unbolt the bolt shown along top of bumper frame.



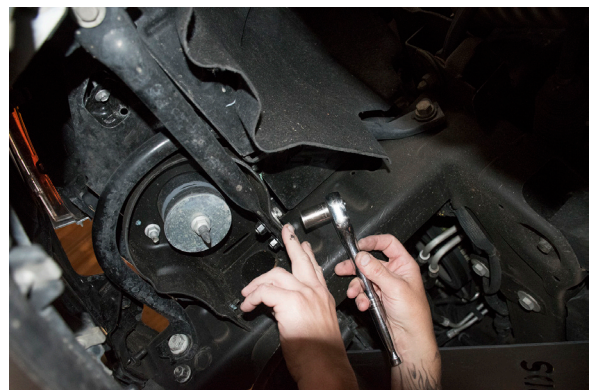
Front Bumper Removal (Continued)

Continue to unbolt and remove bolts as shown



Front Bumper Removal (Continued)

Underneath bumper you'll find a few more bolts to remove as shown in the image to the right.



Front Bumper Removal (Continued)

Once all bolts have been removed, pull and remove the stock front bumper.



Internal Support Frame

Remove the three stock bolts as shown in photo.



Tow Hook Removal

Remove bolts and towhook as shown to the right.



Plastic portion removal on each side

unbolt two screws on each corner plastic piece as shown.



Plastic portion removal on each side (Continued)

Remove corner plastic pieces on each side



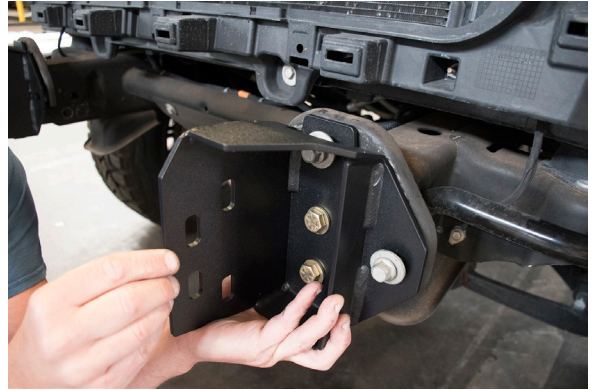
Frame Support Pieces

Smaller piece is slid into vehicle frame. The back hole uses 1/2" bolt and single nut retainer in that location. The two front holes use 1/2" bolts and nuts.



### Internal Frame Support

Reuse the three factory bolts to attach new internal frame. The single nut retainer and 1/2" bolt go into the center area of internal frame bracket, attaching to the smaller frame bracket from prior photo.



### Bumper Install (Recommend winch/light install first prior to bumper placement)

Attach bumper using (4) 1/2" bolts on either side and hand tighten. Then install stock grille back on. Adjust bumper to desired position leaving around 1/4" gap all the way around before tightening down bolts. Reattach bolts holding grille and plastic cover.





