

## DASH MOUNT

15-20 FORD F150

17-21 F250/350

DMFF-01



### TOOLS REQUIRED

- 4mm Allen bit
- 7mm hex socket
- 10mm wrench
- Trim pry tool
- Double sided tape
- Safety Glasses
- 15/64" Drill Bit

### SKILL LEVEL

- Novice/Intermediate
- 1 (you)

Little skill level required, you can easily install it by yourself however, additional help will be useful

### TIME REQUIRED

- 1 Hour

Time to install this should only take about an hour

## WARNINGS/CAUTIONS BEFORE STARTING INSTALLATION

Before you install this kit – Read and understand all instructions, warnings, cautions, and notes contained in this installation instruction guide. Consult your vehicle owner's manual for proper disconnection of electrical and lifting of vehicle if required for installation of this product.

This install may require some technical skills and knowledge of basic mechanical work. If you do not feel that you are capable of performing this install please take this product to a trained professional.

After reading this guide please contact us with any questions or concerns before installing product.  
Customer Service: 855-680-9595

*DV8 Offroad is not responsible for any bodily injury or harm to you or your vehicle as a result of an improper install.*

Proper installation of this kit required knowledge of the factory recommended procedures for removal and installation of original equipment components. We recommend that the factory shop manual and any special tools needed to service your vehicle be on hand during the installation. Installation of this kit without proper knowledge of the factory recommended procedures may affect the performance of these components and the safety of the vehicle

- Always wear eye protection when operating power tools

*Inspect all contents of this package to make sure product is not damaged and all installation hardware has been included. If parts are missing from kit, please be prepared to provide the following information*

1. Name of purchase location
2. Bar Code on side of box
3. Date above bar code
4. Date inside box cover

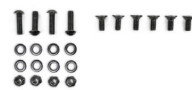
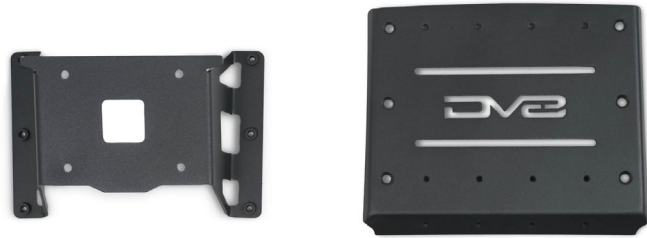


# INSTALLATION MANUAL

Begin by unpacking all items and inspecting for missing pieces or damage. If you have any concerns, please contact the company the product was purchased from. Extra hardware may be included with the product.

## HARDWARE INCLUDED

- (4) M6x20 Allen
- (4) M6 Lock Nuts
- (8) M6 Flat Washers
- (6) M6x14 Tapered Allen



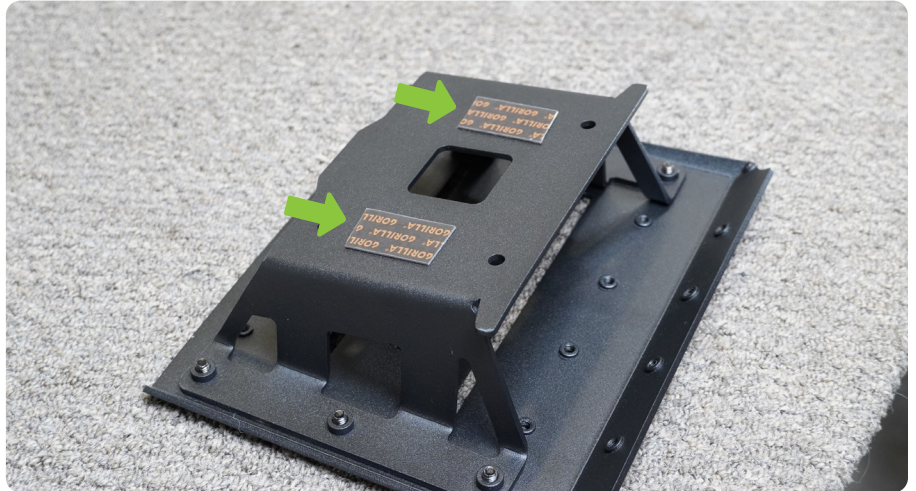
**STEP 1** | Using the (6) M6 screws and a 4mm allen bit on a work bench, assemble the top plate and mount.



# INSTALLATION MANUAL

**STEP 2** | Place (2) pieces of double sided tape on the bottom of the Dash Mount bracket.

Peel off protective layer.



**STEP 3** | Remove factory dash pocket mat.



# INSTALLATION MANUAL

**STEP 4 |** Place DV8 Dash Mount into factory pocket, press down firmly.

Ensure the Dash Mount is aligned with factory dash parting lines.



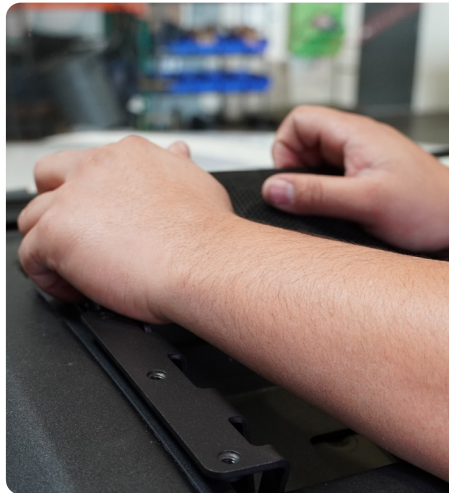
**STEP 5 |** Remove the Dash Mount top by removing the (6) M6 screws using a 4mm Allen bit.



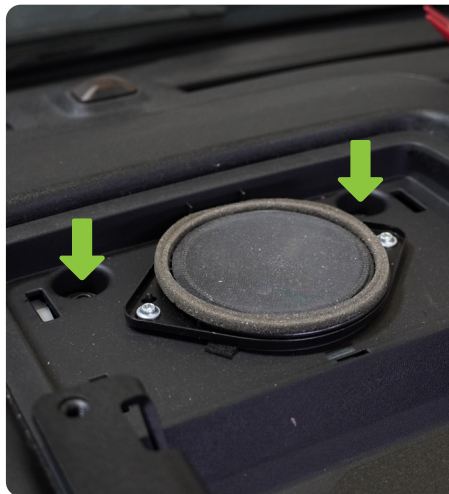
# INSTALLATION MANUAL

**STEP 6 |** Remove the dash speaker cover.

With a trim grip, pull the front of the speaker cover up.



**STEP 7 |** Using a 7mm Socket, remove the two bolts holding the dash pocket in place.



**STEP 8 |** Using a trim pry tool, pry up the factory dash pocket.



# INSTALLATION MANUAL

**STEP 9 |** Disconnect the speaker wiring harness.



**STEP 10 |** With the factory dash pocket removed and the DV8 Dash Mount double sided in place, use a marker to mark the 4 holes you will need to drill into the factory dash pocket.

After marking the holes remove the DV8 Dash Mount.



# INSTALLATION MANUAL

**STEP 11** | Using a 15/64ths drill bit, drill 4 holes in the factory dash pocket where previously marked.



**STEP 12** | Using a 4mm allen bit, 10mm wrench and provided M6 hardware, install the DV8 Dash Mount.



## INSTALLATION MANUAL

**STEP 13** | Re-install the connector for the dash speaker and then re-install the dash pocket by firmly pressing it into place until the clips are secure.



**STEP 14** | Use a 7mm socket to secure the dash speaker using the factory hardware.





# INSTALLATION MANUAL

**STEP 15** | Use a 4mm allen bit with the provided M6 hardware to secure the top plate to the mount.



**STEP 16** | Congrats! You are finished with the install of the F- Series Dash Mount.

