

SPEC SERIES BUMPER

14-21 TOYOTA TUNDRA

FBTT2-06



TOOLS REQUIRED

- 10, 12, 14, 17, 21mm Sockets
- 10&22mm wrenches
- #4 Allen tool
- Trim Tool
- Safety Glasses

SKILL LEVEL

- Novice/Intermediate
- 2 persons

Little skill level required, however, additional help is required for removal and installation of bumpers.

TIME REQUIRED

- 4 Hours

Time to install this should take about four hours.

WARNINGS/CAUTIONS BEFORE STARTING INSTALLATION

Before you install this kit – Read and understand all instructions, warnings, cautions, and notes contained in this installation instruction guide. Consult your vehicle owner’s manual for proper disconnection of electrical and lifting of vehicle if required for installation of this product.

This install may require some technical skills and knowledge of basic mechanical work. If you do not feel that you are capable of performing this install please take this product to a trained professional.

After reading this guide please contact us with any questions or concerns before installing product.
Customer Service: 855-680-9595

DV8 Offroad is not responsible for any bodily injury or harm to you or your vehicle as a result of an improper install.

Proper installation of this kit required knowledge of the factory recommended procedures for removal and installation of original equipment components. We recommend that the factory shop manual and any special tools needed to service your vehicle be on hand during the installation. Installation of this kit without proper knowledge of the factory recommended procedures may affect the performance of these components and the safety of the vehicle

- Always wear eye protection when operating power tools

Inspect all contents of this package to make sure product is not damaged and all installation hardware has been included. If parts are missing from kit, please be prepared to provide the following information

1. Name of purchase location
2. Bar Code on side of box
3. Date above bar code
4. Date inside box cover

INSTALLATION MANUAL

Begin by unpacking all items and inspecting for missing pieces or damage. If you have any concerns, please contact the company the product was purchased from. Extra hardware may be included with the product.

HARDWARE INCLUDED

- (12) M14x35 Hex
- (24) M14 Flat Washers
- (12) M14 Nylon Lock Nuts
- (4) M6x20 Allen
- (8) M6 Flat Washers
- (4) M6 Nylon Lock Nuts



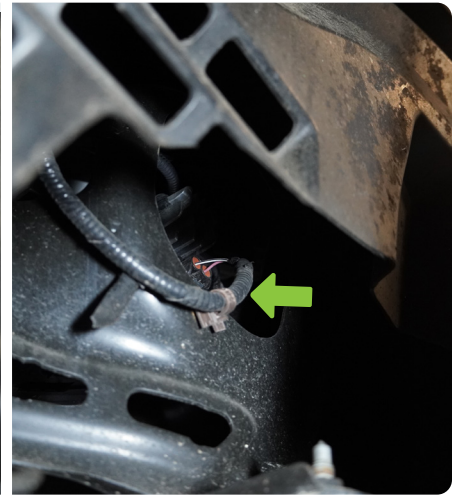
STEP 1 | Remove the 3 bolts using a 10mm and 12mm and frame push pin securing the wheel well using a 12mm socket, 10mm socket and a trim tool.



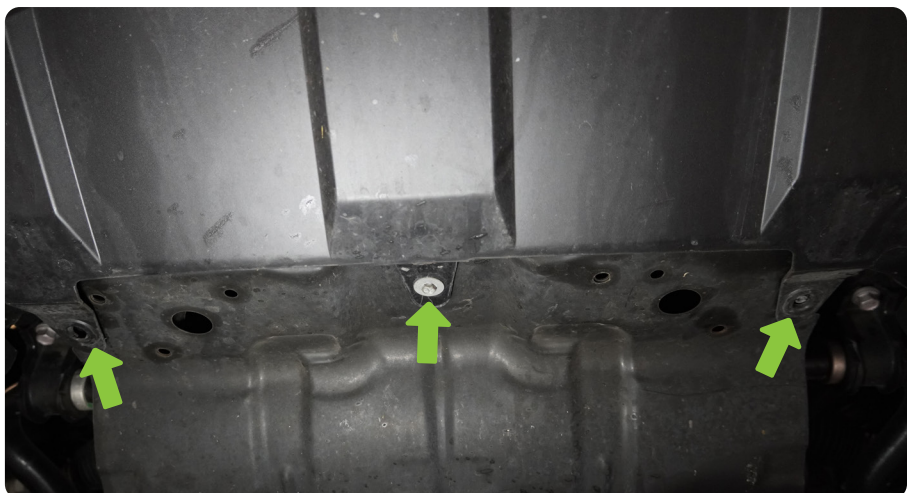
INSTALLATION MANUAL

STEP 2 | Disconnect the fog lights and parking sensors (if equipped). The plugs are located on each side of the bumper behind the wheel wells.

The parking sensors harnesses are a 3 wire plug.



STEP 3 | Using a 10mm socket, remove the 3 bolts securing the bumper to the factory skid plate.



INSTALLATION MANUAL

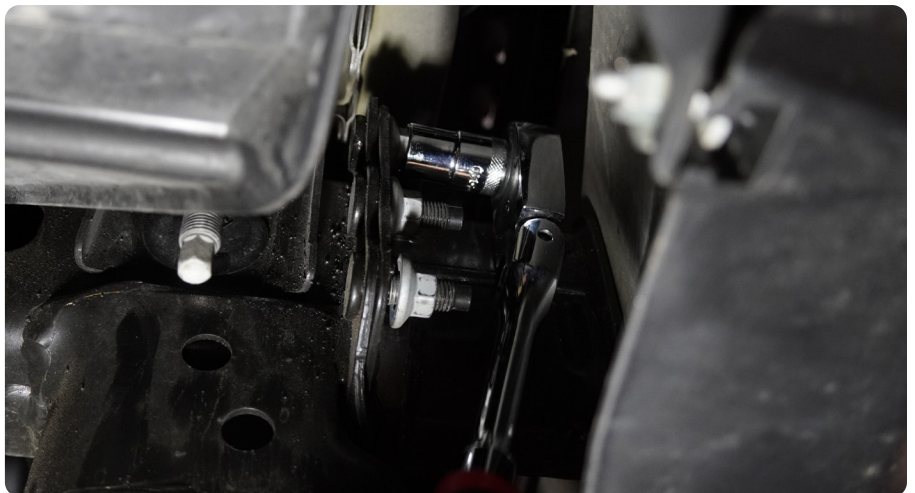
STEP 4 | (Optional)

Remove the factory tow hooks using a 17mm socket.



STEP 5 | Use a 14mm wrench or deep socket to remove the 4 bumper mounting nuts on each side.

This hardware will be reused.



INSTALLATION MANUAL

STEP 6 | With assistance pull the bumper away from the vehicle.

Ensure all harness retaining clips have been removed from the bumper with a trim tool.



STEP 7 | Remove the parking sensors from the OEM Bumper. First, unplug the sensor then, slide the white plastic piece to the side. Push the sensor out the front of the bumper.

Make sure to keep note of the location of the parking sensors so you can install them in the same position on the DV8 bumper.



INSTALLATION MANUAL

STEP 8 | Place the DV8 bumper on soft surface to be assembled and to prevent any damage to the powder coating.

Install the provided foam on to the bumpers center section where the wing bolt to.



STEP 9 | Install the bumper wings using the provided M14 hardware.

Use 2 washers per bolt, one for the bolt and the other for the nylon locking nut.

Use a 22mm wrench for the locking nuts and a 21mm socket for the bolt head.



INSTALLATION MANUAL



STEP 10 | If planning to run a light bar install the light bar now.

Install the provided light bar brackets on to your light bar using the hardware that was provided with the light bar.



STEP 11 | Install the light bar with the brackets on the bumper using the provided M6 hardware.

Center the light bar and use a #4 Allen wrench and 10mm wrench to secure the light bar in place.

For this install we chose a DV8 20" Elite Single Row LED Light Bar.



INSTALLATION MANUAL

STEP 12 | If planning to run a winch, install the fairlead and winch at this time.

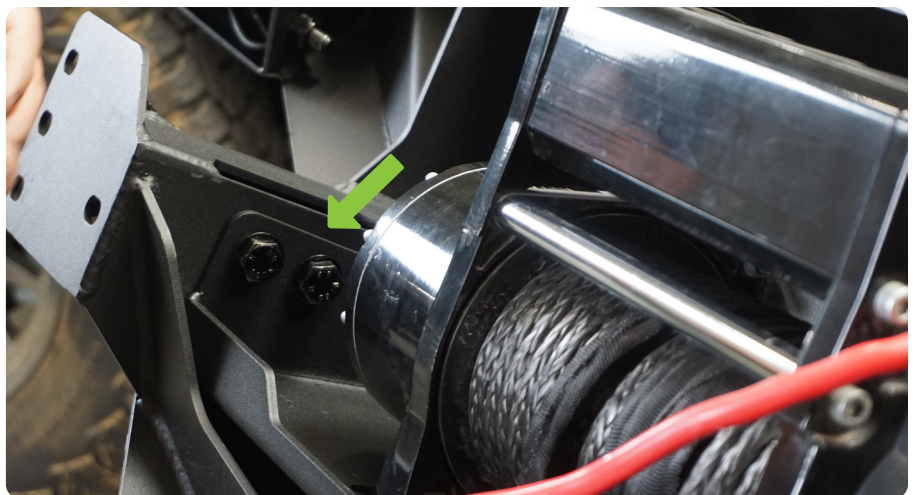
Install the fairlead using the hardware provided with the fairlead.

Install the winch on to the winch plate using the hardware that is provided with the winch.



STEP 13 | Install the winch and winch plate on to the bumper using the provided M14 hardware with the bolts pointed out.

Use a 22mm wrench and 21mm socket to secure the winch plate hardware.



INSTALLATION MANUAL

STEP 14 | (Optional Step - for customers running a winch only)

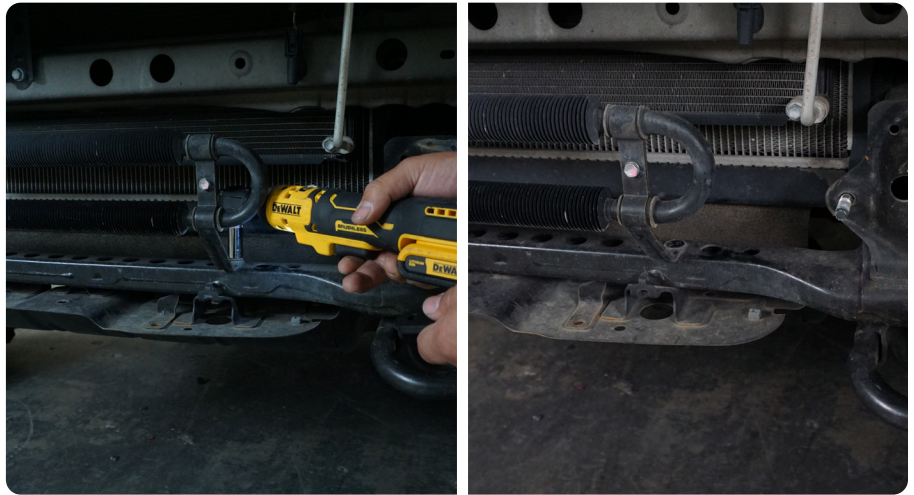
Using a 12mm socket, remove the bolt securing the power steering coolers mounting bracket on the drivers side.

Use a 12mm socket to loosen the passenger side power steering cooler mounting bracket.

Use the provided spacer bracket and M6 hardware to push the power steering cooler back towards the radiator.

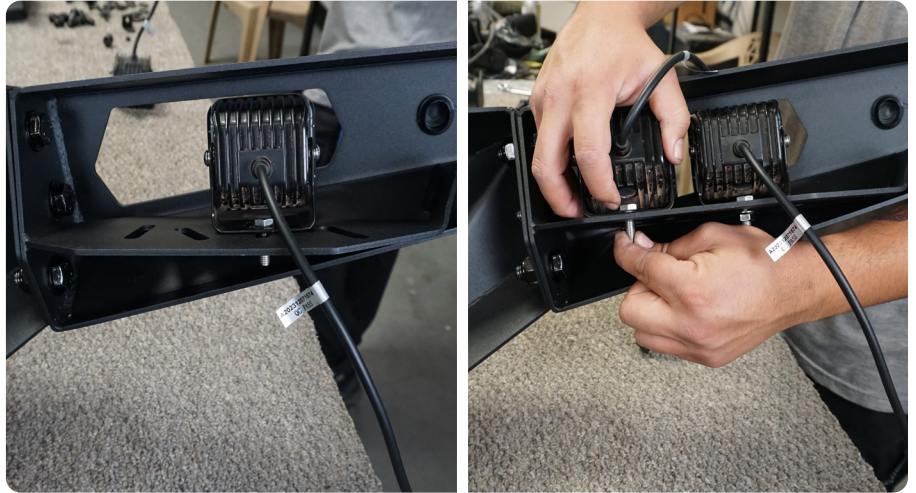
Secure the spacer bracket to the cross member using the factory bolt.

Secure the passenger side factory bolt.



INSTALLATION MANUAL

STEP 15 | If planning to use 3" pod lights, install the pod lights at this time using the hardware provided with the light.



STEP 16 | Install the parking sensors into your new bumper in the same position/orientation as they came off the OEM bumper.

To install the sensors, push them into their holes from the front side of the bumper, then slide the white plastic piece into place on the back side of the bumper



INSTALLATION MANUAL

STEP 17 | With assistance, install the bumper on to the vehicle.

Loosely secure the bumper using the factory mounting nuts.

Align the bumper with the vehicle so that the bumper wing ends are even on both sides.



STEP 18 | Secure the bumper using factory hardware and a 14mm socket.

Reconnect parking sensors. (If equipped)

Utilizing the built in zip tie tabs, secure all wiring.



STEP 19 | Double check that all hardware is secure.

Congratulations!! Installation of the DV8 Spec Series Bumper.

