



# Installation Instructions

## Toyota Tundra Rear Bumper

Product Number: W2850,W2851  
Application: '14 Toyota Tundra

---

## SAFETY

---

**Your safety and the safety of others is very important.**

- In order to help you make informed decisions about safety, we have provided installation instructions and other information.
- These instructions alert you to potential hazards that could hurt you or others.
- Please do a job safety analysis (JSA) before each task to identify potential hazards for your situation and remove/protect against them.
- You must use your own good judgment, and take your time.

**Read and understand all safety precautions and instructions before installing this product.**

THIS PRODUCT IS FOR OFFROAD USE ONLY. ALL LIABILITY FOR INSTALLATION AND USE RESTS WITH THE OWNER.

**CARELESS INSTALLATION AND OPERATION CAN RESULT IN SERIOUS INJURY OR EQUIPMENT DAMAGE.**

**SENSORS' FIELD OF VIEW WILL BE ALTERED WITH USE OF THE REPLACEMENT BUMPER.**

---

## Injury hazard

---

**Failure to observe these instructions could lead to severe injury or death.**

- Always** remove jewelry and wear eye protection.
- Always** use extreme caution when jacking up a vehicle for work. Set emergency brake and use tire blocks. Locate and use the vehicle manufacturers designated lifting points. Use jack stands.
- Always** use appropriate and adequate care in lifting components into place.
- Always** insure components will remain secure during installation and operation.
- Always** wear safety glasses when installing this kit. A drilling operation will cause flying metal chips. Flying chips can cause serious eye injury.
- Always** use extreme caution when drilling on a vehicle. Thoroughly inspect the area to be drilled (on both sides of material) prior to drilling, and relocate any objects that may be damaged.
- Always** use extreme caution when cutting and trimming during fitting.
- Always** tighten all nuts and bolts securely per installation instructions.
- Always** route electrical cables carefully. Avoid moving parts, components that become hot and rough or sharp edges.
- Always** insulate and protect all exposed wiring and electrical terminals.
- Always** perform regular inspections and maintenance on mounts and related hardware.





# Installation Instructions Toyota Tundra Rear Bumper

Product Number: W2850,W2851

Application: '14 Toyota Tundra

## I. Overview

Congratulations on your new purchase of the industries' best and most stylish Rear Bumper available for the 2014+ Toyota Tundra! This Bumper has been **engineered** for strength while keeping the weight down.

Your Rear Bumper designed in 3-D from digitized data, CNC laser cut, fabricated, and powder coated... all in the U.S.A.

Enjoy the fit and finish of a quality Toyota Tundra Rear Bumper from Fab Fours Inc.





# Installation Instructions Toyota Tundra Rear Bumper

Product Number: W2850,W2851

Application: '14 Toyota Tundra

## Tools Required

- Socket Wrench with Extension
- 3/4", 12mm, & 19mm Sockets  
(ratcheting wrenches may also be convenient)
- 3/4", 12mm , & 1 1/32" Box End Wrenches
- 3/32" Allen Wrench
- Flat and Phillips Head Screw Drivers
- Floor Jack and wood block.

## II. Removal of Stock Bumper

***A. Disconnect the sensor light and towing harness on the back side of the license plate lights from the main connector on the truck frame. Secure the harness out of harms way to the back of the bumper.***

***B. Remove your license plate from the OEM Bumper.***

***C. Remove the plastic corner pieces from the top of the OEM bumper by pulling up from the outside edge. If the plastic is being stubborn during removal the plastic clips can be popped loose from the bottom side of the bumper.(Figure 1)***



Figure 1





## Installation Instructions Toyota Tundra Rear Bumper

Product Number: W2850,W2851

Application: '14 Toyota Tundra

***D. Remove the Phillips head screw passing through the plastic that was hidden by the license plate previously. See Image Below.***



Figure 2

***E. Pop the plastic clips loose on the bottom side of the main piece of plastic on the top side of the bumper allowing access to the OEM fasteners.***

***F. Using a 12mm wrench remove the eight OEM fasteners holding the OEM bumper shells to the receiver hitch.***

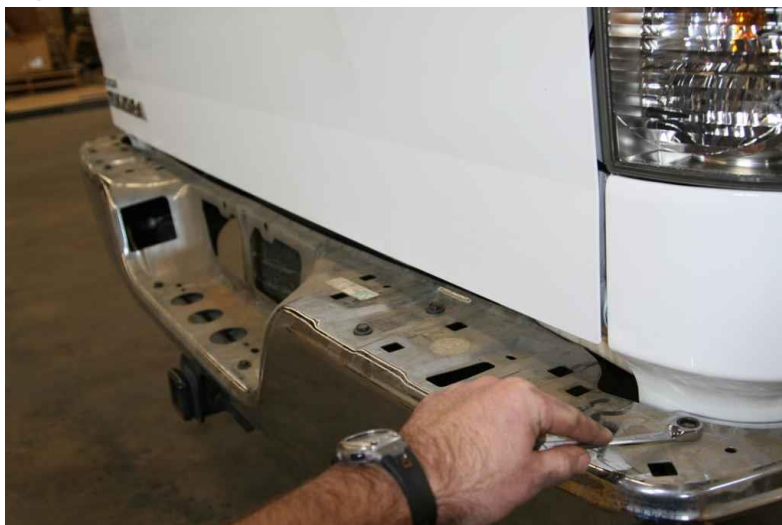


Figure 3





## Installation Instructions Toyota Tundra Rear Bumper

Product Number: W2850,W2851

Application: '14 Toyota Tundra

**G. Remove the OEM bumper shells and set aside.**

**H. If your truck is equipped with sensors remove the sensors and sensor harness from the bumper at this time, and save for the Fab Fours bumper installation.**

**I. Your Truck is now ready for the installation of your new Fab Fours Rear Bumper!**

### III. Pre-Installation

**A. Remove Fab Fours bumper from shipping carton and lay all item out on a blanket to prevent damage.**

**B. Install license plate lights provided with the included hardware.**

**C. Install trailer plug receptacle. The stock plug receptacle must be drilled with a 7/32 drill bit (1/4 is acceptable) using the shown impressions in the receptacle as guides. Attach with the provided #8 hardware.**



**D. Install license plate inserts in 4 provided locations.**





## Installation Instructions Toyota Tundra Rear Bumper

Product Number: W2850,W2851

Application: '14 Toyota Tundra

***E. For sensor equipped vehicles: install sensors from the outside of the bumper by inserting the connector in first and rotating until the sensor is fully installed. DO NOT EPOXY AT THIS TIME.***





## Installation Instructions Toyota Tundra Rear Bumper

Product Number: W2850,W2851

Application: '14 Toyota Tundra

### IV. Rear Bumper Installation

**NOTE:** The Following Installation steps apply to the installation of the Rear Bumper. **PLEASE READ THE ENTIRE MANUAL BEFORE ATTEMPTING INSTALLATION!** Ignoring these steps will increase your probability of scratching the vehicle during product Installation!

***A. Using a 19mm socket and wrench to remove the three bolts from each side of the hitch frame plate.***

***B. Install supplied intermediate mounting brackets to the hitch frame plate using the OEM hardware. Complete on both driver and passenger sides of vehicle. Do Not Fully Tighten, Finger Tighten Only. See Image Below.***



Figure 4

***C. With the help of two friends and possibly a floor jack to help support the center of the bumper lift the Fab Fours bumper into place.***





## Installation Instructions Toyota Tundra Rear Bumper

Product Number: W2850,W2851

Application: '14 Toyota Tundra

***D. With the bumper held into place insert the supplied ½” fasteners through the bumper and into the bumper brackets placing the nuts on the front side of the frame mount. Do Not Fully Tighten. See Image Below.***

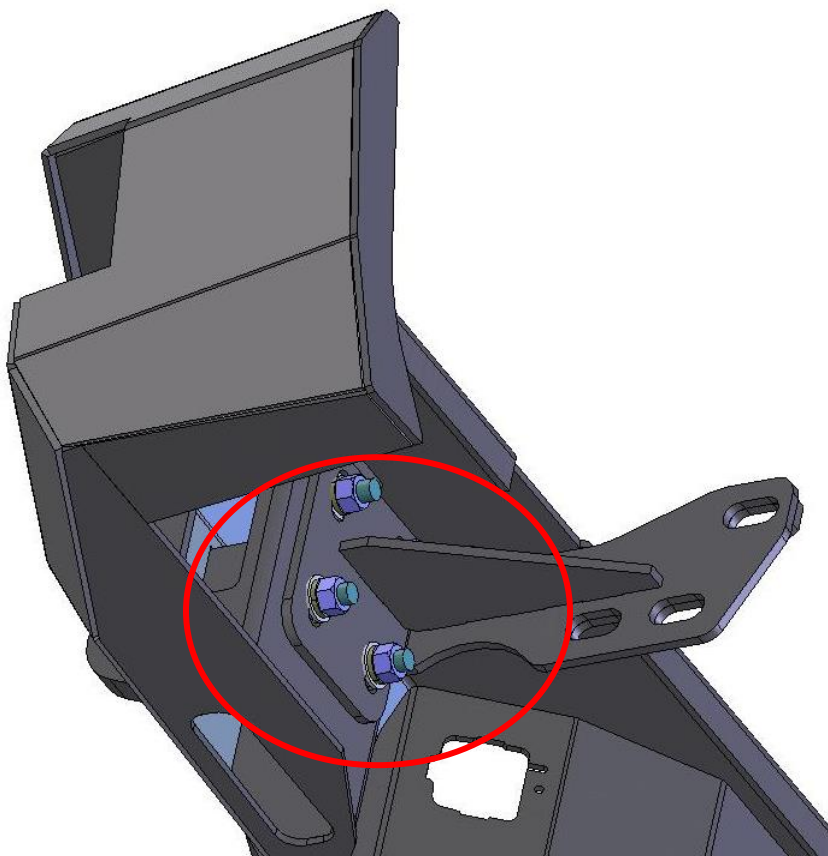


Figure 5

***E. Align the bumper side to side and top to bottom to ensure a perfect fit to the truck. Allow for a 0.375” clearance to all painted surfaces if possible to allow for frame flex.***

***F. Check that the tailgate does not interfere with the bumper by opening it very carefully and lowering it into place. If tailgate is too close to the bumper, adjust bumper lower.***







## Installation Instructions Toyota Tundra Rear Bumper

Product Number: W2850,W2851

Application: '14 Toyota Tundra

***G. Fully tighten all fasteners between bumper and brackets and brackets and frame.***

***H. Remove the factory harness from the center section of the OEM bumper.(Figure 6)***

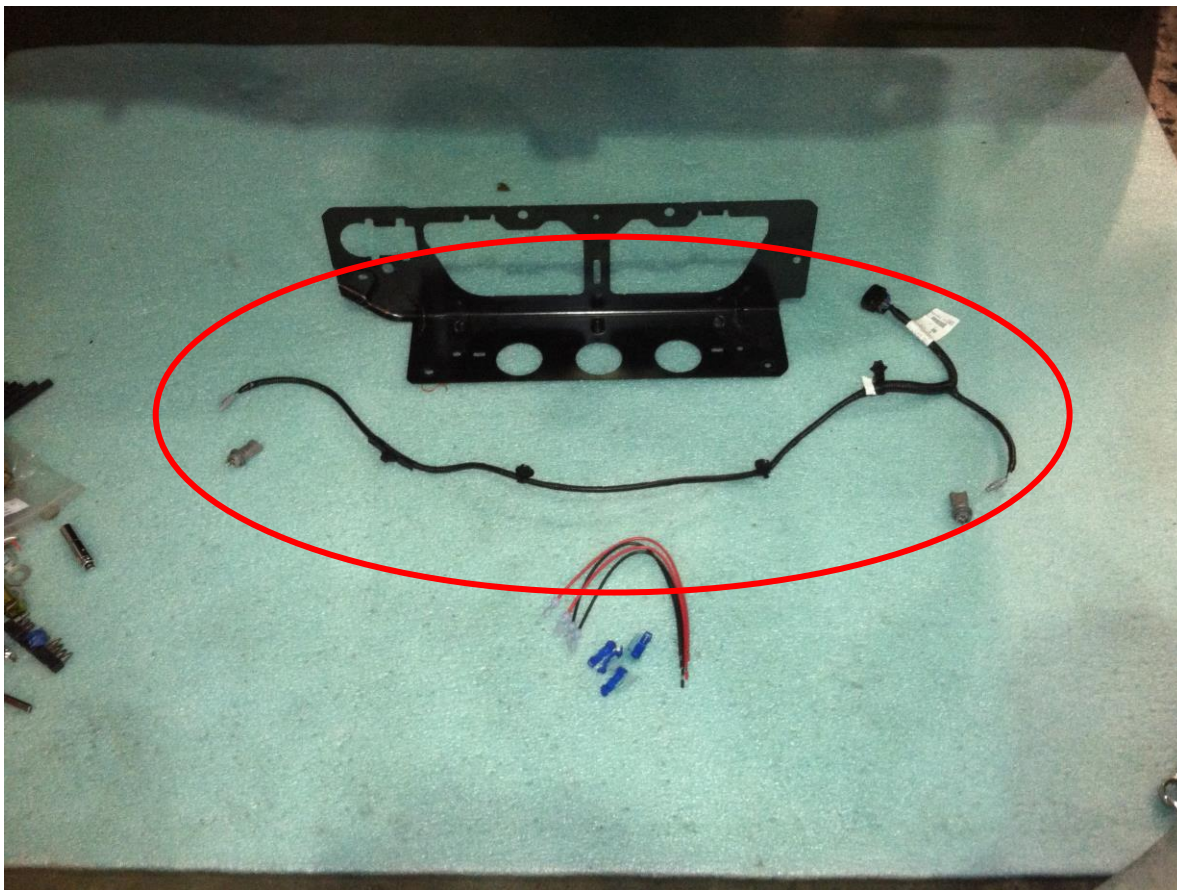


Figure 6

***I. With the supplied T-Tap connectors tab into the Green and White w/Black stripe wires at the ends of the OEM harness as shown in Figure 7 and figure 8. Repeat on opposite side.***

***J. Place the Red wires with the female spade connector onto the T-Tap connected to the Green wire of the OEM harness (Figure 8)***





# Installation Instructions Toyota Tundra Rear Bumper

Product Number: W2850,W2851

Application: '14 Toyota Tundra

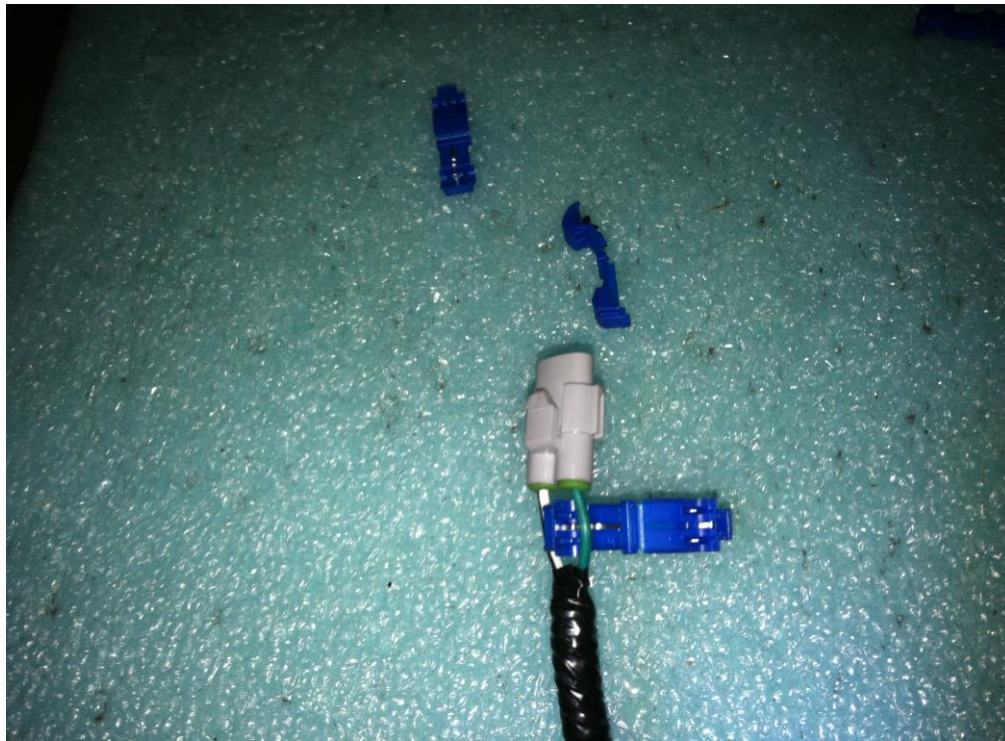


Figure 7

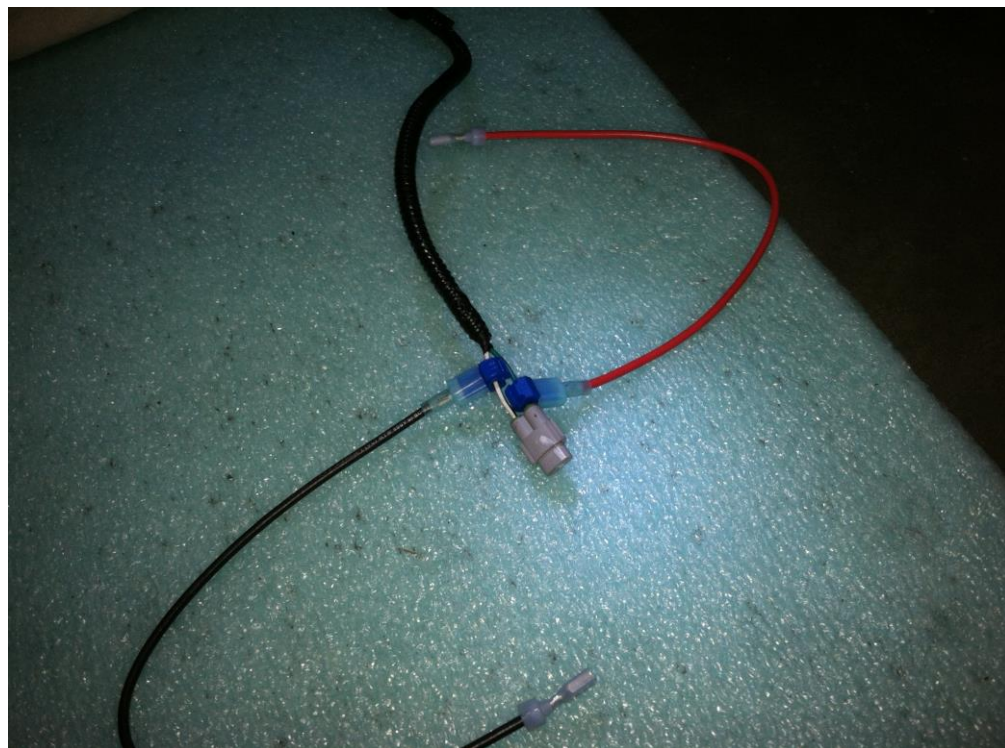


Figure 8





## Installation Instructions Toyota Tundra Rear Bumper

Product Number: W2850,W2851

Application: '14 Toyota Tundra

***K. Re-Install the modified factory harness and connect to the license plate lights as shown in Figure 9. Use zip-ties to secure excess wiring.***



Figure 9

***L. FOR SENSOR BUMPER INSTALLATION ONLY: Install the sensor harness back into the bumper and plug the harness into both the sensors and the truck side connector. Test the sensor to ensure that the truck does not read the ground or give off any error. Once complete epoxy the sensors permanently in.***

***M. Enjoy your New Rear Replacement Bumper from Fab Fours!***





## Installation Instructions Toyota Tundra Rear Bumper

Product Number: W2850,W2851

Application: '14 Toyota Tundra

### V. Maintenance/Care

- Periodically check and tighten all fasteners.
- Stripped, fractured, or bent bolts or nuts need to be replaced.
- After washing of the vehicle make sure to fully dry all surfaces

### VI. Contact Information

Fab Fours Inc.  
1312 Camp Creek Rd  
Lancaster, SC 29720

Phone (866)-385-1905  
Fax (866)-574-1424  
Email [Support@fabfours.com](mailto:Support@fabfours.com)



**More than expected... Better than expected**

