



2007 – 2018 Wrangler JK Narrow Front Fender Installation Instructions

INS FFJKG2-N-F

*Thank you for your purchase of your *MCE Fenders!* We hope that you will love the new look and function of your Jeep with the addition of our product. It is our desire as well that your installation go as smoothly and quickly as possible. Please read through these instructions entirely, and be sure to have the proper tools handy. If you have any questions, please visit our website at www.mcefenders.com, or reach us by phone (800) 595-7659 or e-mail techdl@daystarweb.com. Thanks again!

TOOLS REQUIRED:

- 10 MM socket with at least 3" extension for OE fender bolts
- Long nose pliers or channel locks for OE fender clips
- Cutting tool (reciprocating saw, cut off wheel, ect.) for inner splash guard modification
- Drill
- 5/16" driver for drill
- 5/16" socket and socket wrench
- 5/32" allen wrench
- 7/16" end wrench

Now Let's Get Started:

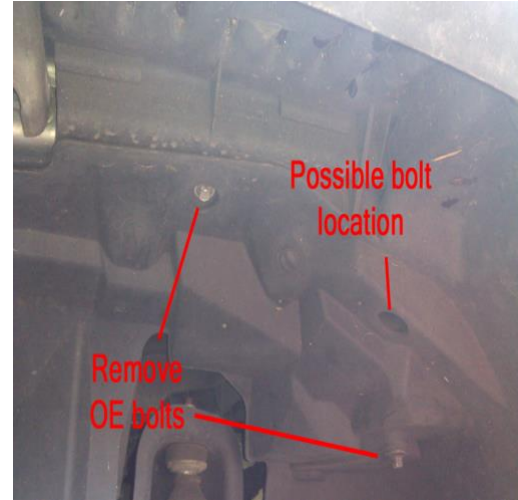
1. Unplug OE corner marker light

Reach up into the fender and grab the back of the OE light socket. Twist ½ turn and pull out. Remove the plastic clips holding the wiring loom to the OE fender.

2. Unbolt OE fender

Depending on model year, there are varying amounts of bolts. Some have 5 bolts, other have a 6th bolt hidden up in a hole in the inner splash guard.

Thank you for your business!



3. Remove OE fender from vehicle

Grab the fender at the bottom where it meets the rocker panel. Using a quick motion, pull up and outward at the same time. The fender will pop off it's OE plastic clips.



4. Remove OE fender clips from vehicle

Using the pair of long nose pliers or channel locks, reach behind the clip and squeeze the two flared flanges together. Simultaneously, pull the clip out from the body by twisting and pulling.

Thank you for your business!



5. Clean vehicle mounting surface

Clean the accumulated dirt from the fender mounting flange.



6. Predrill Fastener Holes

Except for the front most three holes, the rest of the holes in the MCE fender do not line up with the OE holes on the vehicle. Holding the fender in proper place to fit in the stamped body panel (either a second person or some clamps will help) use a pen and mark the holes. Using the 5/16" nut driver in a drill, use the self-drilling screw itself to drill the hole. Take care to drill the hole only, and not to strip out the threads by over tightening the fastener.

7. Install MCE Fender

Hold the fender up to the body in position. Loosely install the 1" long button head bolts and fender washers into the 3 front-most holes. Do not tighten all the way. Next, install the self-drilling screws into the holes you just drilled, with a dab of RTV to prevent rust. Do not tighten fully yet. With the fasteners not fully tightened, the fender placement can be adjusted on the vehicle for best fitment. Once the fender is aligned for best fitment, tighten all the fasteners.

Thank you for your business!

8. Install button head bolt into exposed fastener hole in grille

Install the 1/2" long button head bolt into the exposed hole in the side of the grille, directly below the front tip of the fender. This will cover the exposed hole and finish the look of the vehicle.

9. Move to the other side, remove OE fender and install MCE Fender

In the same manner as above, remove the other OE front fender, and install MCE fender.

10. Install LED Marker Lights (Optional)

White LED wire: Negative

Black LED wire: Positive

These lights can be installed at your desired location, they just need a 3/4" hole to be drilled. Some people enlarge the hole in the side of the grille to 3/4" in step 8 of these instructions. Others drill a 3/4" hole in the side of the fender. But these can be mounted anywhere. Using a test light, find the positive and negative wires that went to the OE side marker light, cut the stock bulb socket off, and splice the appropriate LED wires to the OE wires.

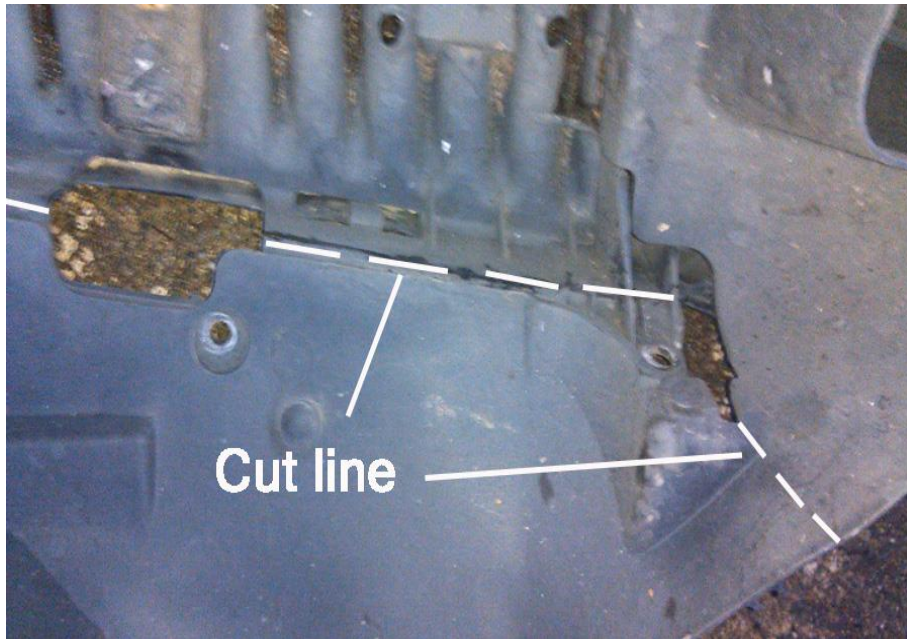
The next steps are for modifying and installing the OE inner splash guards (strongly recommended in front applications)

1. Scribe a cut line

*We are essentially trimming away the portion of the splash guard that is directly below the OE plastic fender. Or in other words, retaining only the amount which is housed within the vehicle sheet metal body.

Starting from the lower edge of the OE fender/splash guard combo, scribe a line from the inner edge of the OE fender. Make this line go from the bottom of the splash guard, all the way to the top corner where it meets the solid plastic OE fender brace. Continue scribing the line onto the OE fender brace. (It will be at the point of the 90 degree bend). Then, mark the front line as shown in the below figure. Also note to from the below figure that the rear portion of the solid plastic brace gets completely trimmed away.

Thank you for your business!



2. Cut along the lines

Using the cutting tool of your choice, trim the splash guard.

Thank you for your business!

3. Install splash guard

Install the trimmed splash guard by pushing it into place. The MCE fender has a lip which will retain the splash guard, so the splash guard must be pushed far enough inward that it will go behind the lip on the MCE fender. Next, install the OE 10 MM bolts into the remaining holes in the splash guard.

4. Modify and install splash guard on other side of vehicle

Modify and install the splash guard in the same fashion as above.



Congratulations, you are finished!

Thank you for your business!