

INSTALLATION MANUAL

HRLBCU100

Level of Difficulty

Easy

Installation difficulty levels are based on time and effort involved and may vary depending on the installer level of expertise, condition of the vehicle and proper tools and equipment.

Parts List

Qty	Description
1	Universal light mount base
1	Universal light mount tube
4	Self-drilling screw, 1/4" - 14 x 3/4"
3	Hex head bolt, 1/2" - 13 x 1-3/4"
3	Lock washer, 1/2"
3	Flat washer, 1/2"
1	Headache rack*

*Sold separately

Tools Required

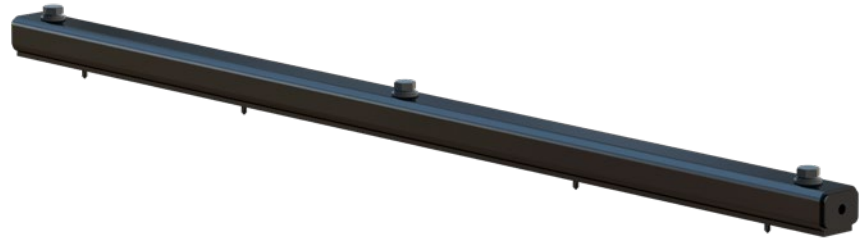
Drill	Allen wrench, 5/16"
Nut driver, 3/8"	Torque wrench
Ratchet	--

Torque Specifications

1/4" bolt	11 ft-lbs.
1/2" bolt	37 ft-lbs.

Use above torque setting unless otherwise noted

Product Photo



NOTICE

Visit www.ranchhand.com for a full-color copy of this instruction manual, as well as helpful videos, guides and much more!

Before you begin installation, read all instructions thoroughly.

Proper tools will improve the quality of installation and reduce the time required.

Periodic inspection of your product should be performed to ensure all hardware and / or components remain secure.

To help prevent damage to the product or vehicle, refer to the specified torque specifications when securing hardware during the installation process.

Maintenance

Mild automotive detergent may be used to clean the product. Do not use dish detergent, abrasive cleaners, abrasive pads, wire brushes or other similar products that may damage the finish.

Product Registration and Warranty

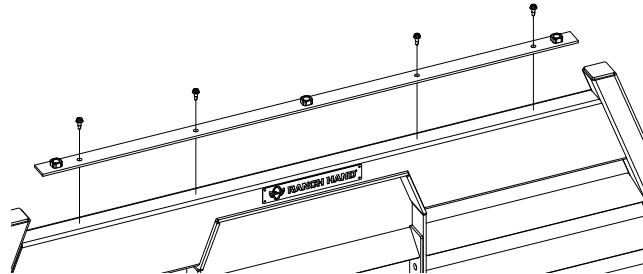
Ranch Hand stands behind our products with industry-leading warranties. To get copies of the product warranties, register your purchase or provide feedback, visit: warranty.curtgroup.com/surveys

Step 1

Line the bracket up with the mounting holes centered on the headache rack top tube.

Step 2

Use a 3/8" nut driver and drill to install the self-drilling screws in each of the four mounting holes.



Step 3

Secure the lights to the mounting tube per manufacturer's instructions.

Note: Light bars that cannot be removed from the manufacturer's mounting brackets may need step 4 mounting bolts pre-inserted into mounting hole(s).

Step 4

Secure the light mounting tube to the base bracket using three 1/2-13 x 1-3/4" bolts, 1/2" lock washers and 1/2" flat washers.

