



DESTROYER SERIES SKIDPLATE

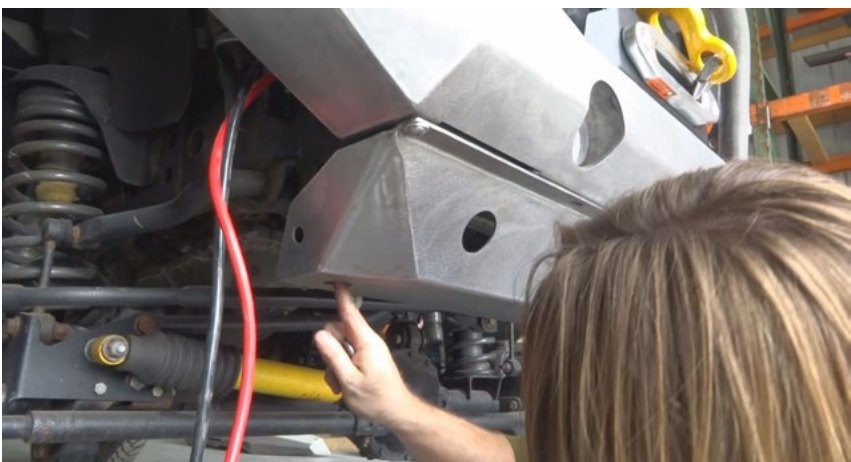
Hardware Provided

- Four (5/16") buttonhead bolts
- Two (3/8") bolts
- Four (5/16") washers
- Four (7/16") washers
- Two (3/8) hex nuts



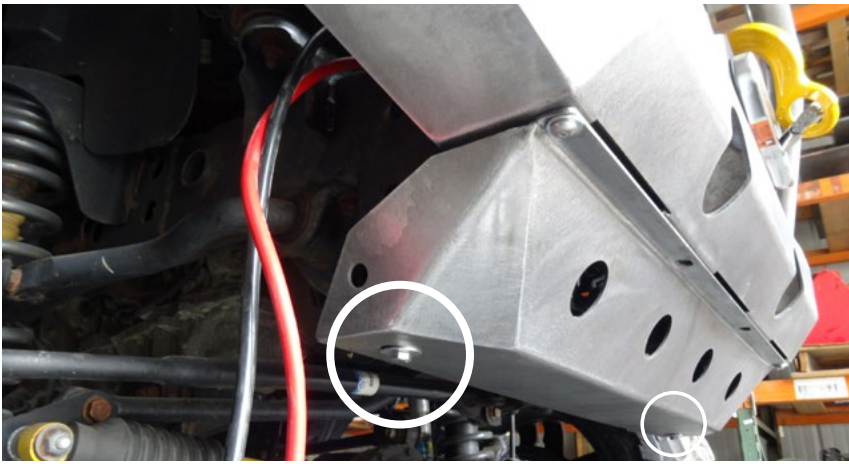
STEP 1:

- USING THE FOUR (5/16") BUTTON HEAD BOLTS, LINE UP THE HOLES AND ATTACH THE CORNERS, THEN THE MIDDLE OF THE SKIDPLATE, FOR A TOTAL OF FOUR BOLTS.



STEP 2:

- THE PASSENGER SIDE BOTTOM 3/8" BOLT WILL REQUIRE A HOLE TO BE DRILLED THROUGH THE FRAME IN ORDER TO FULLY SECURE THE SKIDPLATE.



STEP 3:

- ONCE THE TWO BOTTOM (3/8") BOLTS WITH (7/16") WASHERS ARE ATTACHED, THE SKIDPLATE SHOULD BE FULLY SECURED.



STEP 4:

- THE SKIDPLATE IS NOW SECURED AND READY TO PROTECT YOUR JEEP!

Fabricated Assemblies List

ITEM NO.	PART NUMBER	DESCRIPTION	QTY.
2	4JKS1002	DESTROYER SKID PLATE	1

Hardware Kit List

ITEM NO.	PART NUMBER	DESCRIPTION	QTY.
8	HB 0.3125x1	5/16" Buttonhead Bolts	4
9	Preferred Wide FW 0.3125	5/16" Washers	4
10	Preferred Narrow FW 0.4375	7/16" Washer	4
11	HB 0.375	3/8" Bolts	2

