



# 2010 – 2023 TOYOTA 4-RUNNER

PART # KT04518BK

## 1" BODY LIFT INSTALL INSTRUCTIONS

Daystar is your number one source for Made In The USA quality, Comfort Ride™ leveling kits. Now backed with our exclusive Go Everywhere © Lifetime Limited Warranty (see terms at Daystarweb.com). To assure your safety and proper installation of this product, take a moment to read all instructions and Product Safety Information before trying to install your Daystar® product. Current OEM suspension design is complex: meaning safe and proper installation requires understanding OEM service techniques for disassembly and assembly of the components indicated together with the instructions and warnings set out below and in the OEM service manual and your owner's manual. Daystar® strongly recommends seeking advice from or having this product installed by a professional mechanic who can inspect your suspension, confirm compatibility with your tire and wheel choice and, if needed, reset alignment to optimize your steering and the features of your Daystar® Comfort Ride kit. We are here to help if you have remaining technical questions after reading these instructions. Contact us toll free at 800-595-7659.

### PRODUCT SAFETY INFORMATION

Throughout these instructions important safety information is generally preceded by one of three signal words indicating the relative risk of injury. The signal words mean:

#### ! WARNING

A hazardous situation which, if not avoided, could result in death or serious injury. You can be Killed or Seriously Hurt if you do not follow instructions.

#### ! CAUTION

A hazardous situation which, if not avoided, could result in minor or moderate injury. You can be moderately HURT and may suffer property damage if you don't follow instructions.

### NOTICE

Careful attention is required to this instruction or operation but does generally not relate to personal injury. Damage to your product or other property may result if you don't follow instructions.

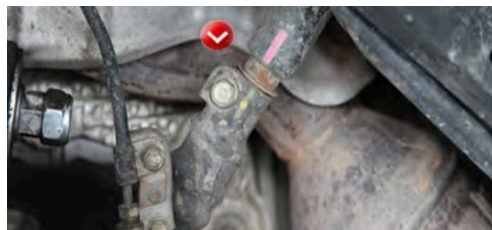
#### !WARNING

Familiarize yourself with all vehicle manufacturer and Daystar warnings, instructions and limited warranties before driving your modified suspension vehicle. Also be aware many states / countries have laws governing on-road vehicle heights and modifications. You are responsible for assuring the safety and legality of your vehicle. A summary of current state vehicle laws is available at [www.sema.org](http://www.sema.org).

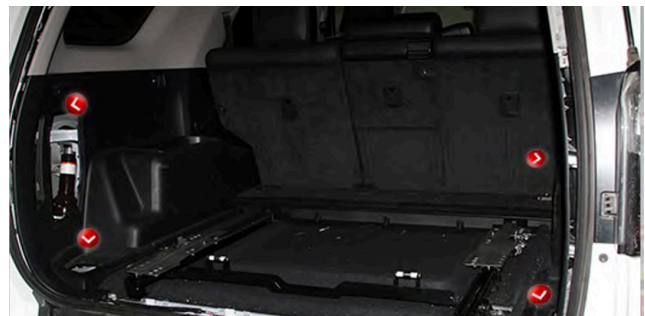
1. Park the Vehicle on a level concrete surface with the steering wheel centered.
2. Block/chock rear wheels to prevent the vehicle movement.
3. Remove the stock front bumper to gain access to the front 2 body mount bolts.
4. You will need to remove the windshield washer reservoir to gain access to the passenger front body bolt.



5. Next loosen the 4 bolts holding on the radiator to the sub-frame- (2 upper and 2 lower). Let the radiator loose and rest on the frame.
6. Loosen the one bolt on the steering slip joint in the engine bay. **NOTE: DO NOT MOVE STEERING WHEEL AFTER LOOSENING THE BOLTS.**



7. Locate all body mounts on vehicle.



8. Pull the side panels away in the cargo area and expose the holes that lead you to the rear body mounts.



9. For the body mounts in the middle, take off the plastic trim on the sides of the rear seats. Lift up the carpet and you will see the hole that leads to the body mount in front of the rear tire.

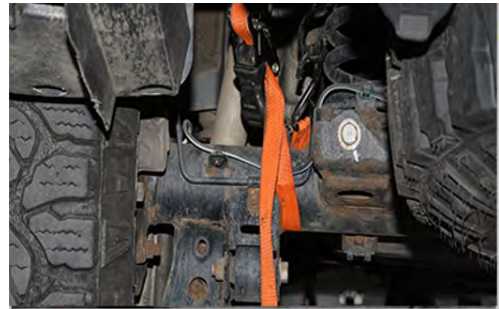
10. Remove the plastic trim that is under the dash in the back, remove the foot pad and kick panel. Pull back the carpet to expose the body mounts.

11. Remove the clips holding the inner rubber fender liners by the front wheel wells, from the frame side on both sides. Each bolt that is connected to the frame has a washer with a notch attached to the bolt, you will need to twist to remove the bolt.



12. We recommend that a tie down is used to hold the axle and the frame together so it is easier to separate the body.

13. If using an auto shop lift. Lift both sides of the body. If using a floor jack only lift one side of the body at a time. Only lift the body high enough so that the spacers can slide between the body and the bushings on the frame. **NOTE THE BODY SHOULD LIFT EASILY. IF THE BODY HAS ANY HESITATION STOP AND FIND WHAT IS STOPPING THE BODY FROM COMING OFF THE FRAME.**



14. Put all the body lift spacers in, along with the longer bolts with the stock washers in the same order they came off. The smaller spacers go on the front two body mounts that are located behind the front bumper. Hand tighten the nuts provided and slowly lower the body down.



15. Install the radiator drop brackets onto the radiator. You will place them so the stud is facing forward towards the grill, use the original radiator bracket bolts and place them through the brackets and into the radiator mount. You will use the hole which is 1 inch from the stud on the bracket. Tighten the brackets on the radiator with the studs above the old mounts. The lower mounts can be accessed from the bottom of the vehicle. Lift the radiator into place and install the studs into the old radiator mount holes. Install nuts and tighten.



16. Reinstall the front bumper; washer bottle; front fender liners, dust covers over the body mount bolt heads and all the interior trim pieces. Tighten the bolts on the steering slip joint at the firewall which you loosened earlier. Recheck that all bolts have been tightened that were loosened during this lift installation.

