

# INSTALLATION GUIDE

## Mule Ultra Roof Rack



Included Hardware:

- (64) 1/4" Button Head Bolts
- (64) 1/4" Nuts
- (38) 5/16" Button Head Bolts
- (38) 5/16" Nuts
- (6) Load Bars
- (12) End Caps
- (6) Sleeves
- (6) 5/16" Button Head Long
- (6) 5/16" Nuts
- (8) Riv Nuts
- (8) Rectangle Spacers
- (8) Round Spacers
- (8) 5/16" Bolts
- (8) 5/16" Washers
- (8) 5/16" Clip Nuts

Tools:

- 1/2" Open Box Wrench
- 3/16" Open Box Wrench
- 5/32" Allen Wrench
- 3/16" Allen Wrench
- Drill with 25/64 drill bit
- (step bit recommended)



Skill Level:

3/5 stars (Some drilling required)

Disclaimer

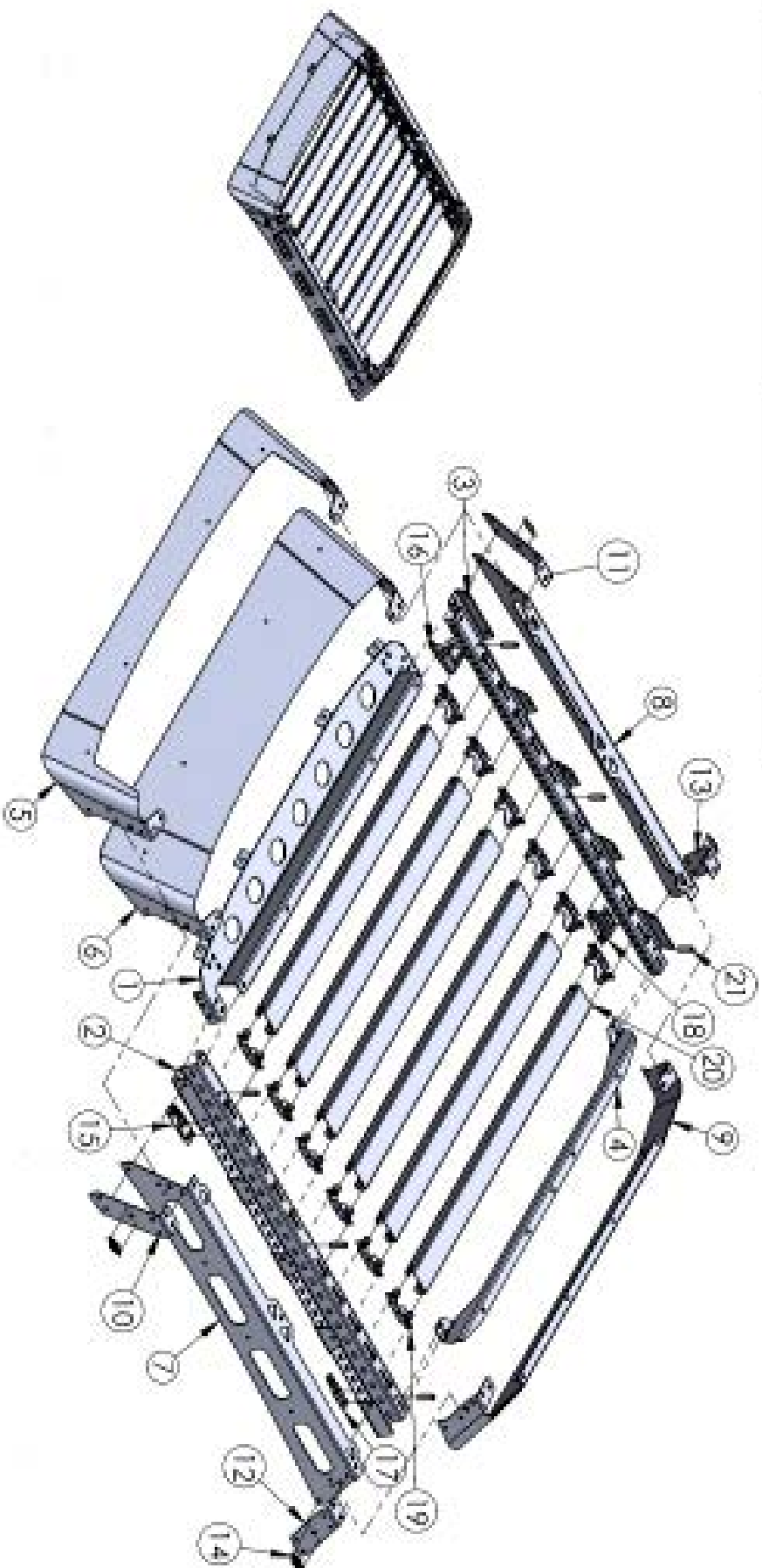
Expedition One is not responsible for any damages to vehicle.  
We always recommend professional assistance when  
installing our vehicle products.

NOTE

Due to the nature of aluminum, rack pieces including fascia parts may require time to "relax" or return to shape before mounting.  
Do not force parts into place. Leave all hardware loose before tightening to allow for adjustment.

ITEM NO.	QTY.	PART NUMBER	DESCRIPTION	SHEET
1	1	ML-CANCO-ULTRA-RK101	FRONT BRACE	2
2	1	ML-CANCO-ULTRA-RK102	RAIL LEFT	3
3	1	ML-CANCO-ULTRA-RK103	RAIL RIGHT	4
4	1	ML-CANCO-ULTRA-RK104	REAR BRACE	3
5	1	ML-CANCO-ULTRA-RK105	LIGHTBAR FRONT	4
6	1	ML-CANCO-ULTRA-RK106	FRONT	7
7	1	ML-CANCO-ULTRA-RK107	LEFT SIDE	8
8	1	ML-CANCO-ULTRA-RK108	RIGHT SIDE	9
9	1	ML-CANCO-ULTRA-RK109-REVA	REAR	10
10	1	ML-CANCO-ULTRA-RK112	FRONT LEFT SIDE/RAW JOINER	11
11	1	ML-CANCO-ULTRA-RK113	FRONT RIGHT SIDE/RAW JOINER	12

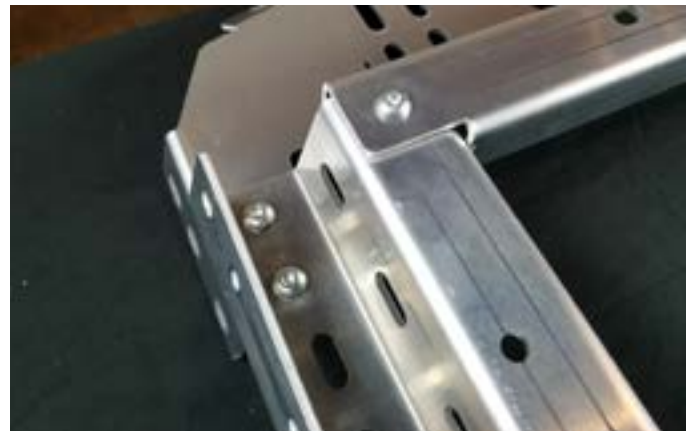
ITEM NO.	QTY.	PART NUMBER	DESCRIPTION	SHEET
12	1	ML-CANCO-ULTRA-RK114	REAR/LEFT SIDE/RAW JOINER	13
13	1	ML-CANCO-ULTRA-RK115	REAR RIGHT SIDE/RAW JOINER	14
14	4	ML-REBRADGE	8RD W/LE LOGO BADGE	-
15	1	ML-CANCO-ULTRA-RK116	FRONT LEFT ROOF MOUNT	15
16	1	ML-CANCO-ULTRA-RK117	FRONT RIGHT ROOF MOUNT	16
17	1	ML-CANCO-ULTRA-RK118	REAR LEFT ROOF MOUNT	17
18	1	ML-CANCO-ULTRA-RK119	REAR RIGHT ROOF MOUNT	18
19	12	ML-ULTRA-SPREADER-SPACER	SPREADER SPACER SET	19
20	4	ML-ULTRA-TACO-CANCO-4MR-SPREADER	SPREADER	20
21	6	ML-ULTRA-CANCO-SPACER/UBE	SPACER TUBE	-



**ATTENTION:** When assembling the Mule Ultra Rack, remember to hand-tighten all bolts relatively loose until the very end of the install. This allows everything to fit into place before everything is tightened down.

Rack Assembly Installation:

Lay out front and side support braces as shown with provided 5/16" bolts and nuts. (see photo below)

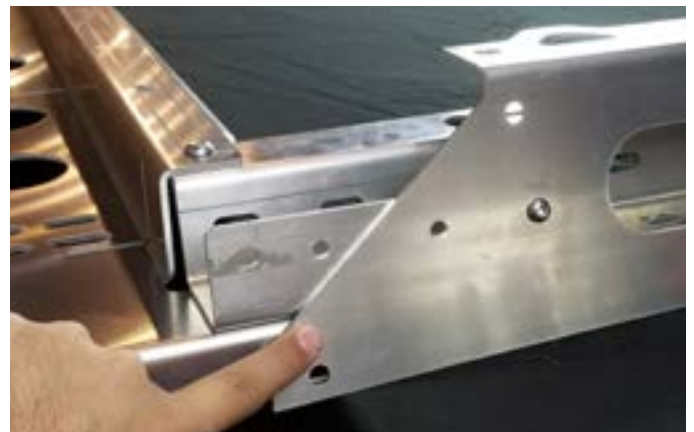


Attach rear reinforcement brace as shown with 5/16" bolts. Repeat on both sides and keep bolts loose.



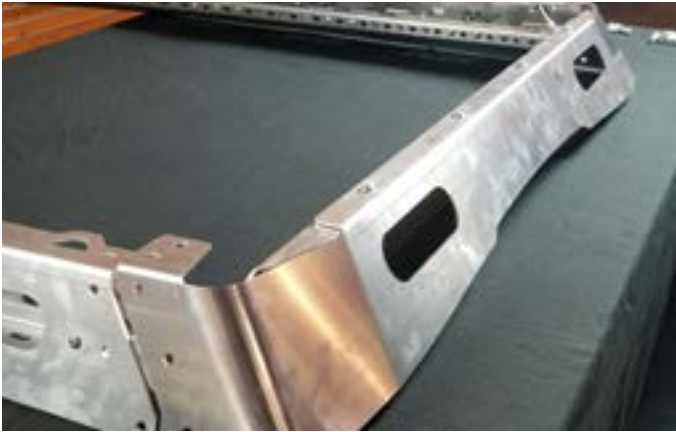
Lay out side fascia pieces and attach with 1/4" bolts (remember to hand tighten but keep loose).

Shallow angle faces towards front end of roof rack as shown in bottom right photo!

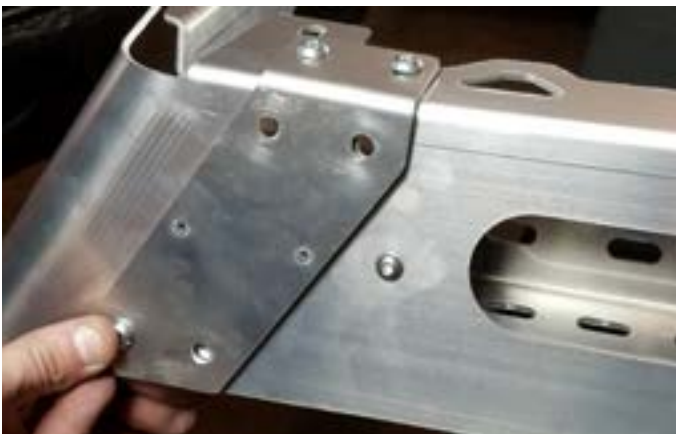




Attach rear fascia as shown with 5/16" bolts and nuts.

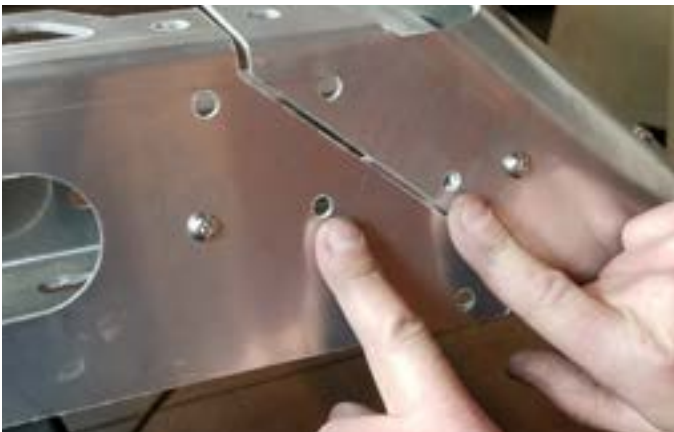


Next attach rear corner connectors with 5/16" bolts shown in photo below. (remember to hand tighten but keep fairly loose!)



Attach front fascia piece shown bottom left photo along with a single spacer piece for each hole.

NOTE: If you bought fascia with light bar cutout, we recommend installing light bar prior to installing front fascia to make things easier.



Make sure not to put any bolts in the holes pointed at below!



Install the weather stripping to the bottom of front fascia as shown and trim any excess.

Attach front corner connectors as shown with 5/16" bolts and nuts, remembering not to place any bolts in the holes pointed at in image below. (hand tighten bolts but keep relatively loose)



Next, attach reinforcement spacers as shown on all 6 hole locations with provided bolts & nuts. There are three mounting hole locations on each side.





Next, assemble load bars with provided end mounts using nuts and bolts. Keep hand tight but loose.



Flip roof rack on its back and attach load bars into desired locations as shown in photo. Using provided nuts and bolts, you may begin tightening down each load bar with two bolts/nuts for each side of load bars as shown.



Flip over roof rack after all load bars are tightened down with tools and begin tightening all other rack bolts to prepare to mount onto vehicle.

Start by pulling back the rubber trim on the roof from the back of cab as shown in Fig 1A.

FIG 1A



With a screwdriver, carefully lift the trim along length of roof.

FIG 1B



For the front, we recommend using a straight to carefully twist the screw driver in order to raise the plastic clip. Try not to twist or kink the plastic trim as it's easily deformed from the metal substructure.

FIG 1C



If you happen to break one of the clips, two clips on the underside are not in use and can act as backup clips once you place the trim back on later in the install. (See Fig 2A)

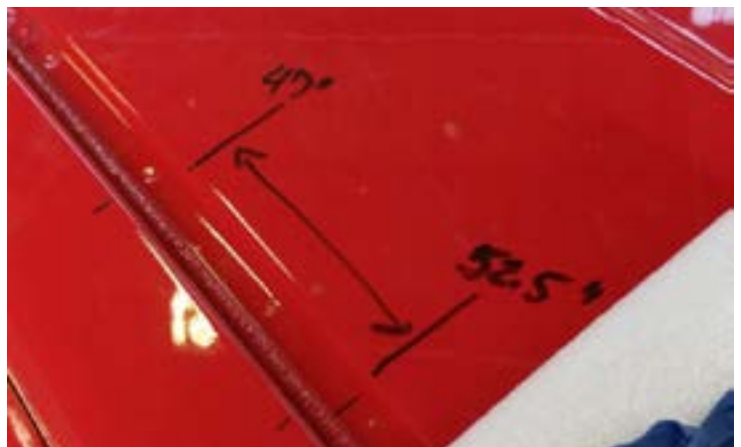
FIG 2A



FIG 2B



FIG 2C



Next, with a non-permanent marker and tape measure, measure out to 14” and 19” from the front windshield where the rubber trim starts.

\*Note - you may not have to use a marker if you want to use another method that will help mark the safe zones in the same manner.

Next, you’ll also need to measure out again from the front windshield where the rubber trim starts and out to the 47” and 52.5” mark for the rear.

Once you have your 'safe zones' marked, you'll want to position your roof mount bracket towards the front of vehicle by placing them up against the 14" and 47" marks when marking your drill holes.

FIG 3A



Once all drill marks are in place, you'll need to use a 25/64 drill bit to drill your holes.

We recommend using a bit with depth collar or a step bit to control your drill descent. The roof sheet metal has 3 layers so use a really good drill bit. There is also roughly 2 1/2" of roof clearance -- any deeper and you run risk of drilling into the head liner.

FIG 3B



FIG 3C





For this step we've provided you with a riv nut tool piece that allows you to tighten down with a socket and wrench if you don't have a riv nut tool available.

Fig 4A, we are placing the riv nut on the tool as shown.

Next, you'll need to rub some silicone sealant around the riv nut itself (Fig 4B)

Place the riv nut into each hole. Using a socket and wrench, begin tightening down as shown in Fig 5A

FIG 4A



FIG 4B



FIG 4C





Shown right is the riv nut being secured into place.

FIG 5A



Next, we recommend placing down the provided padding and poke holes for the mounting hardware. This helps seal everything from the elements.

FIG 5B



FIG 5C

Begin placing your roof mount brackets onto the padding as shown in Fig 5C, making sure the holes line up correctly.

\*NOTE - See photo on next page for correct bracket placement on vehicle





FIG 6A

Secure brackets with provided bolts and washers and tighten with wrench.



FIG 6B

You can now place the roof rack onto the vehicle and position it as shown in Fig 6B & 6C

\*NOTE - we recommend placing a small towel or blanket down onto the roof to prevent any chance of the roof rack hitting the surface accidentally while fitment and alignment is being made.



Once happy with alignment, begin dropping provided washers and bolts into the mounts.

Take this opportunity to double check rack is aligned and the way you want it before tightening down with wrench.

Your all done! If you have any additional questions or feedback, please don't hesitate to email us at

[info@expeditionone.biz](mailto:info@expeditionone.biz)

FIG 7A



FIG 7B



FIG 7B

