

INSTALLATION GUIDE

Mule Ultra Rack



CONTENTS

4Runner Mule Ultra Rack 3

Included Hardware:

- (102) 1/4" Button Head Bolts
- (102) 1/4" Nuts
- (38) 5/16" Button Head Bolts
- (38) 5/16" Nuts
- (8) M8 Bolts
- (8) Washers
- (6) Sleeves
- (6) 5/16" Button Head Long
- (6) 5/16" Nuts
- (10) Load Bars
- (20) Load Bar End Caps
- (8) Rectangular Spacers
- (4) Round Spacers
- (8) 5/16" Bolts
- (8) 5/16" Washers
- (8) 5/16" Clip Nuts
- (4) 3M Rubber Strips

Tools:

- 1/2" Open Box Wrench
- 3/16" Open Box Wrench
- 5/32" Allen Wrench
- 3/16" Allen Wrench

Skill Level:

2/5 stars

Disclaimer

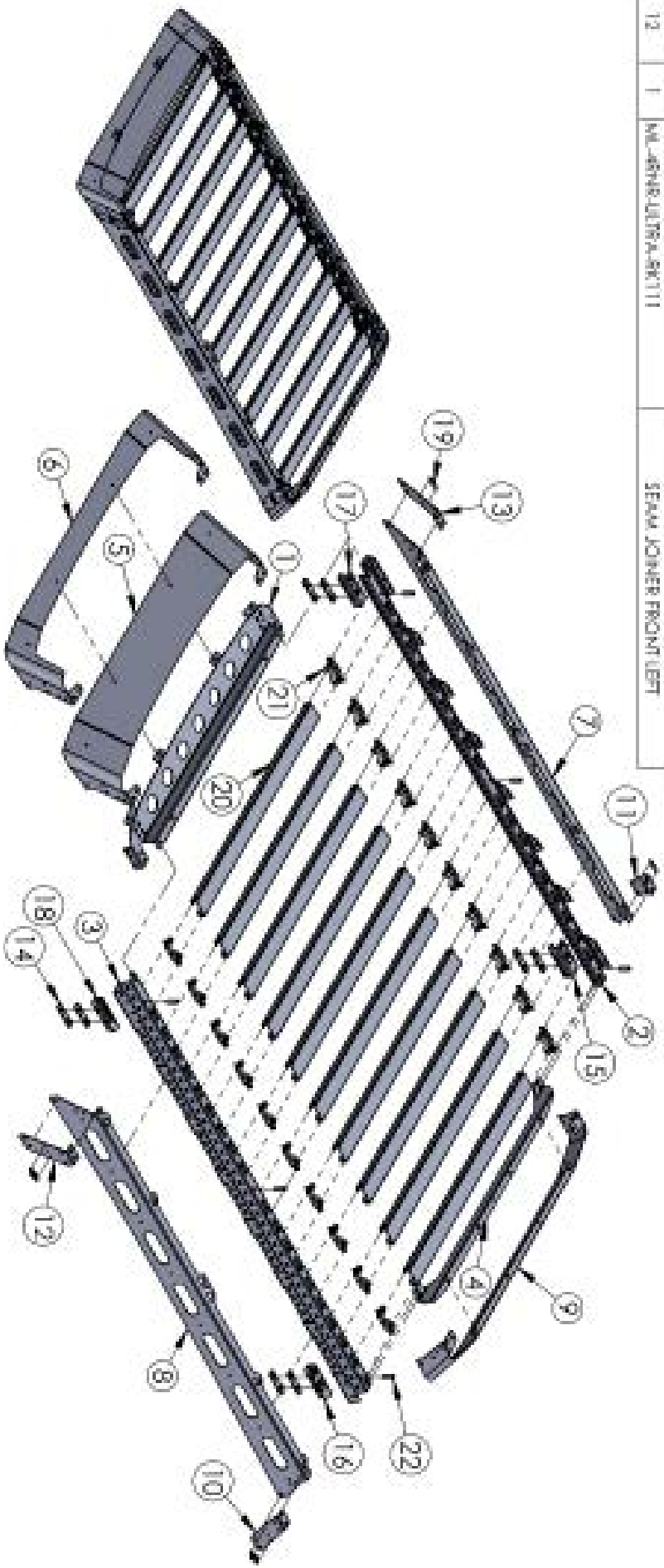
Expedition One is not responsible for any damages to vehicle.
We always recommend professional assistance when
installing our vehicle products.

NOTE

Due to the nature of aluminum, rack pieces including fascia parts may require time to "relax" or return to shape before mounting.
Do not force parts into place. Leave all hardware loose before tightening to allow for adjustment.

| ITEM NO. | QTY. | PART NUMBER | DESCRIPTION |
|----------|------|-----------------------|------------------------|
| 1 | 1 | ML-88NR-ULTRA-SK101 | FRONT BRACE |
| 2 | 1 | ML-88NR-ULTRA-SK102 | RIGHT RAIL |
| 3 | 1 | ML-88NR-ULTRA-SK103 | LEFT RAIL |
| 4 | 1 | ML-88NR-ULTRA-SK104 | REAR SPACE |
| 5 | 1 | ML-88NR-ULTRA-SK105 | FRONT |
| 6 | 1 | ML-88NR-ULTRA-SK105.5 | LIGHTBAR FRONT |
| 7 | 1 | ML-88NR-ULTRA-SK106 | RIGHT SIDE |
| 8 | 1 | ML-88NR-ULTRA-SK107 | LEFT SIDE |
| 9 | 1 | ML-88NR-ULTRA-SK108 | REAR |
| 10 | 1 | ML-88NR-ULTRA-SK109 | SEAM JOINER REAR LEFT |
| 11 | 1 | ML-88NR-ULTRA-SK110 | SEAM JOINER REAR RIGHT |
| 12 | 1 | ML-88NR-ULTRA-SK111 | SEAM JOINER FRONT LEFT |

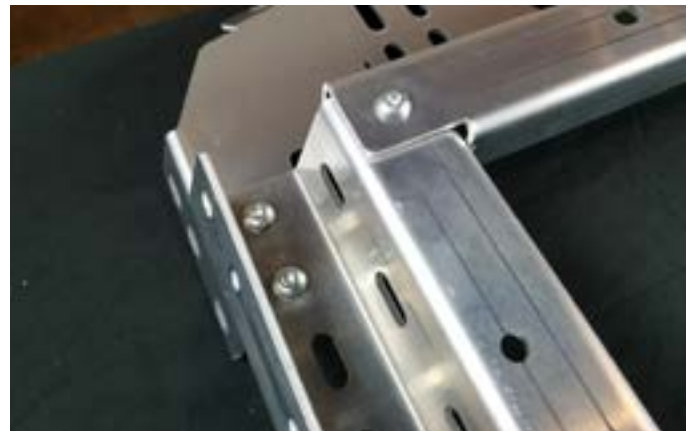
| ITEM NO. | QTY. | PART NUMBER | DESCRIPTION |
|----------|------|-----------------------------------|-------------------------|
| 13 | 1 | ML-88NR-ULTRA-SK112 | SEAM JOINER FRONT RIGHT |
| 14 | 8 | ML-88NR-ULTRA-SK122 | ROOF MOUNT SPACER |
| 15 | 1 | ML-88NR-ULTRA-SK128REV-C | REAR RIGHT ROOF MOUNT |
| 16 | 1 | ML-88NR-ULTRA-SK119-REV-C | REAR LEFT ROOF MOUNT |
| 17 | 1 | ML-88NR-ULTRA-SK124-REV-C | FRONT RIGHT ROOF MOUNT |
| 18 | 1 | ML-88NR-ULTRA-SK125-REV-C | FRONT LEFT ROOF MOUNT |
| 19 | 4 | ML-LOGO-BADGE-RED | MULE LOGO BADGE |
| 20 | 10 | ML-ULTRA-JACO-CANCO-48MR-SPREADER | SPREADER |
| 21 | 20 | ML-ULTRA-SPREADER-BRACKET | SPREADER BRACKET |
| 22 | 6 | ML-ULTRA-CANCO-SPACERTUBE | SPACER TUBE |



ATTENTION: When assembling the Mule Ultra Rack, remember to hand-tighten all bolts relatively loose until the very end of the install. This allows everything to fit into place before everything is tightened down.

Rack Assembly Installation:

Lay out front and side support braces as shown with provided 5/16" bolts and nuts. (see photo below)

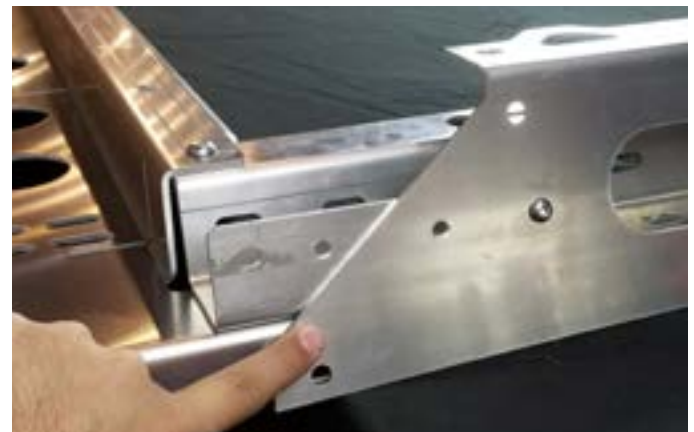


Attach rear reinforcement brace as shown with 5/16" bolts. Repeat on both sides and keep bolts loose.

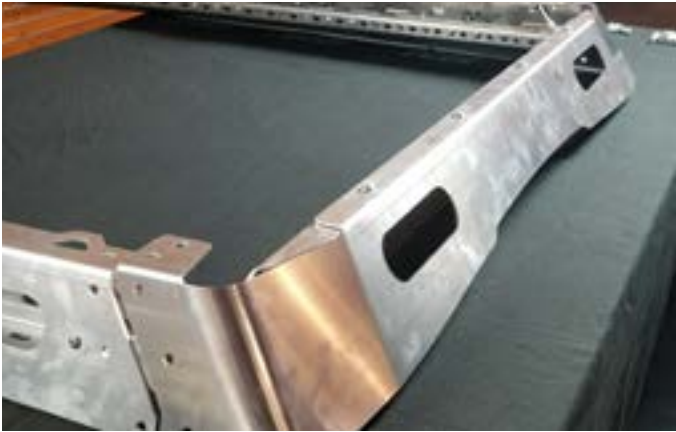


Lay out side fascia pieces and attach with 1/4" bolts (remember to hand tighten but keep loose).

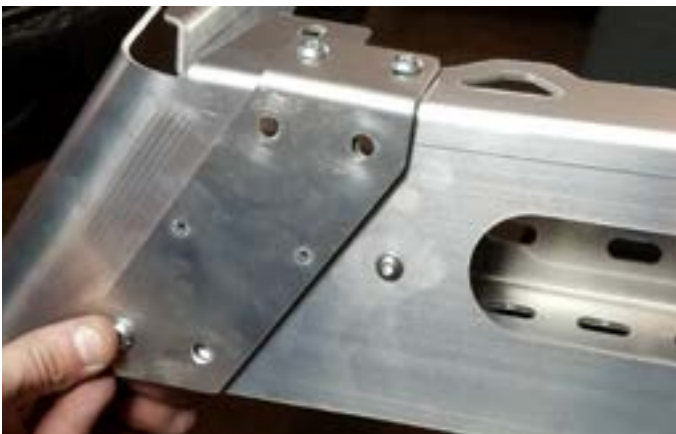
Shallow angle faces towards front end of roof rack as shown in bottom right photo!



Attach rear fascia as shown with 5/16" bolts and nuts.



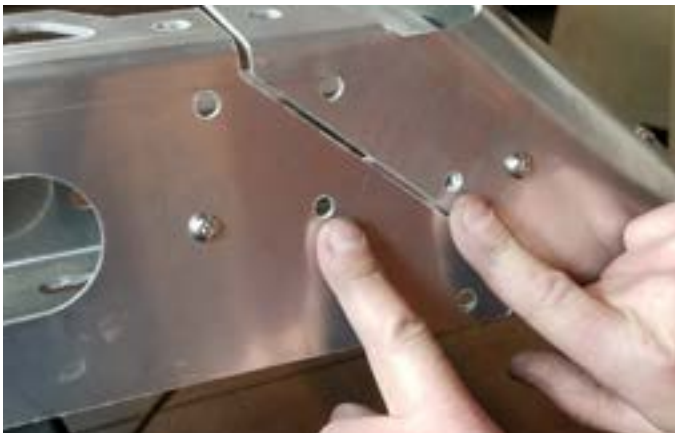
Next attach rear corner connectors with 5/16" bolts shown in photo below. (remember to hand tighten but keep fairly loose!)



Toyota 4Runner

Attach front fascia piece shown bottom left photo along with a single spacer piece for each hole.

NOTE: If you bought fascia with light bar cutout, we recommend installing light bar prior to installing front fascia to make things easier.



Make sure not to put any bolts in the holes pointed at below!



Install the weather stripping to the bottom of front fascia as shown and trim any excess.

Attach front corner connectors as shown with 5/16" bolts and nuts, remembering not to place any bolts in the holes pointed at in image below. (hand tighten bolts but keep relatively loose)



Next, attach reinforcement spacers as shown on all 6 hole locations with provided bolts & nuts. There are three mounting hole locations on each side.



Next, assemble load bars with provided end mounts using nuts and bolts. Keep hand tight but loose.



Flip roof rack on its back and attach load bars into desired locations as shown in photo. Using provided nuts and bolts, you may begin tightening down each load bar with two bolts/nuts for each side of load bars as shown.



Flip over roof rack after all load bars are tightened down with tools and begin tightening all other rack bolts to prepare to mount onto vehicle.

Mount Intallation

Attach clips onto support brackets as shown in photo to right.



Peel off and place provided 3M strips, covering the holes as shown.



Place two spacers over the 3M strips as shown in image.



Toyota 4Runner

Place the mount back into place and push the bolts through the holes and 3M tape. Begin tightening down both bolts as shown. Repeat these steps for all mount brackets.



Once all mounts are put into place and tightened down, carefully place the roof rack onto the roof with a friend to line up with the mount brackets. Begin placing the provided bolts and washers into each hole and tighten down.



Your all set!

If you have any further questions, please email us at info@expeditionone.biz and we'll be happy to help!