

# INSTALLATION GUIDE

## Mule Ultra Rack



# CONTENTS

## Included Hardware:

- (64) 1/4" Button Head Bolts
  - (64) 1/4" Nuts
- (38) 5/16" Button Head Bolts
  - (38) 5/16" Nuts
  - (6) Load Bars
  - (12) End Caps
  - (6) Sleeves
- (6) 5/16" Button Head Long
  - (6) 5/16" Nuts
  - (8) Riv Nuts
- (8) Rectangle Spacers
  - (8) Round Spacers
  - (8) 5/16" Bolts
  - (8) 5/16" Washers
  - (8) 5/16" Clip Nuts

## Tools:

- 1/2" Open Box Wrench
- 3/16" Open Box Wrench
- 5/32" Allen Wrench
- 3/16" Allen Wrench

## Skill Level:

2/5 stars (Some drilling required)

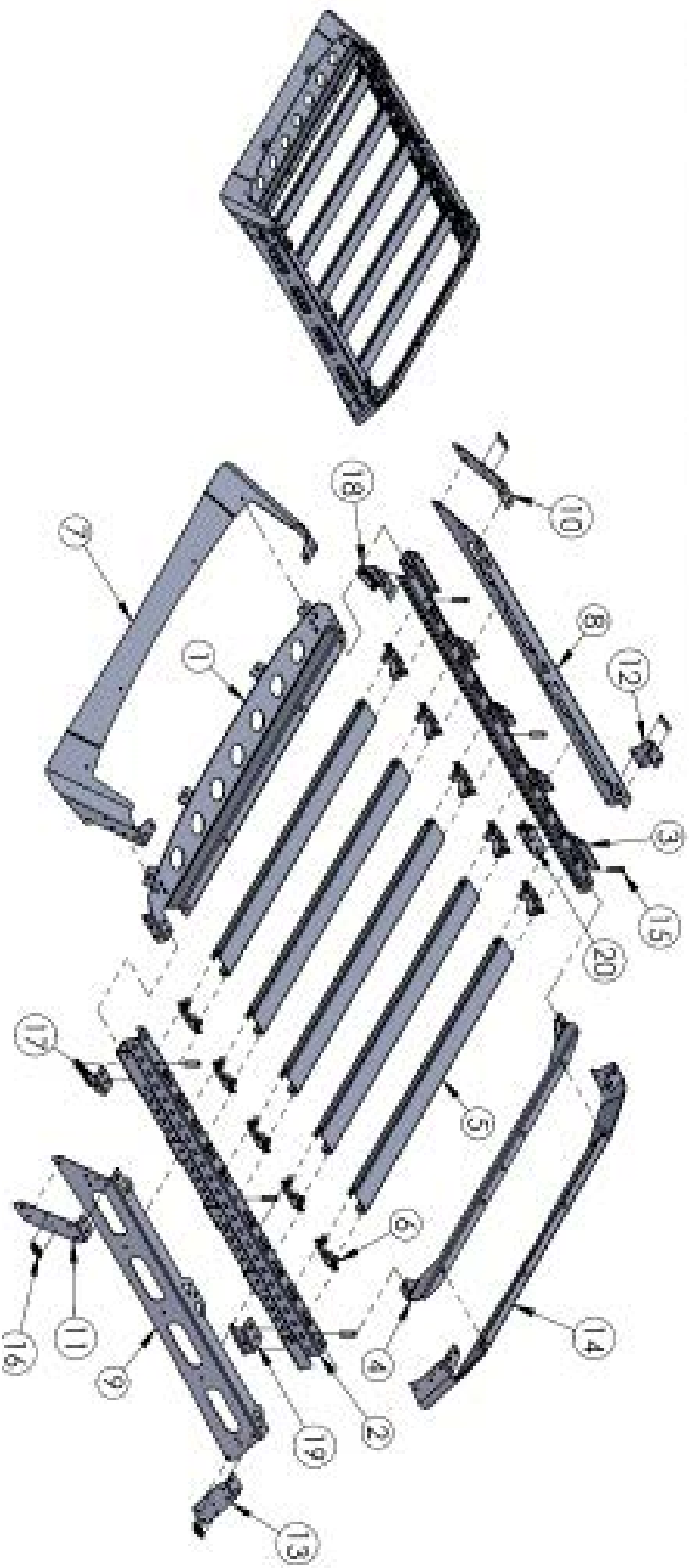
## Disclaimer

Expedition One is not responsible for any damages to vehicle.  
We always recommend professional assistance when  
installing our vehicle products.

## NOTE

Due to the nature of aluminum, rack pieces including fascia parts may require time to "relax" or return to shape before mounting.  
Do not force parts into place. Leave all hardware loose before tightening to allow for adjustment.

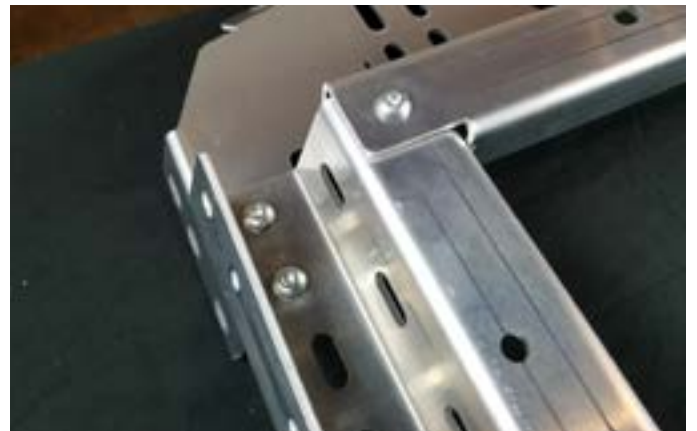
ITEM NO.	QTY.	PART NUMBER	DESCRIPTION	ITEM NO.	QTY.	PART NUMBER	DESCRIPTION
1	1	ML-TACQUILTRA-LTBAR-9K101	FRONT BRACE	11	1	ML-TACQUILTRA-LTBAR-9K110	SEAM JOINER FRONT LEFT
2	1	ML-TACQUILTRA-LTBAR-9K102	INTERNAL RAIL LEFT	12	1	ML-TACQUILTRA-LTBAR-9K111	SEAM JOINER REAR RIGHT
3	1	ML-TACQUILTRA-LTBAR-9K103	INTERNAL RAIL RIGHT	13	1	ML-TACQUILTRA-LTBAR-9K112	SEAM JOINER REAR LEFT
4	1	ML-TACQUILTRA-LTBAR-9K104	REAR BRACE	14	1	ML-TACQUILTRA-LTBAR-9K113	SHELL REAR
5	5	ML-TACQUILTRA-LTBAR-9K105	SPREADER	15	5	ML-TACQUILTRA-LTBAR-9K114	SPACER
6	10	ML-TACQUILTRA-LTBAR-9K105.1	SPREADER BRACKET	16	4	ML-TACQUILTRA-LTBAR-9K115	WALE LOOP BRIDGE
7	1	ML-TACQUILTRA-LTBAR-9K106	SHELL UPGRADE FRONT	17	1	ML-TACQUILTRA-LTBAR-9K117	ROOF JOINT FRONT LEFT
8	1	ML-TACQUILTRA-LTBAR-9K107	SHELL RIGHT	18	1	ML-TACQUILTRA-LTBAR-9K118	ROOF JOINT FRONT RIGHT
9	1	ML-TACQUILTRA-LTBAR-9K108	SHELL LEFT	19	1	ML-TACQUILTRA-LTBAR-9K119	ROOF JOINT REAR LEFT
10	1	ML-TACQUILTRA-LTBAR-9K109	SEAM JOINER FRONT RIGHT	20	1	ML-TACQUILTRA-LTBAR-9K120	ROOF JOINT REAR RIGHT



**ATTENTION:** When assembling the Mule Ultra Rack, remember to hand-tighten all bolts relatively loose until the very end of the install. This allows everything to fit into place before everything is tightened down.

Rack Assembly Installation:

Lay out front and side support braces as shown with provided 5/16" bolts and nuts. (see photo below)

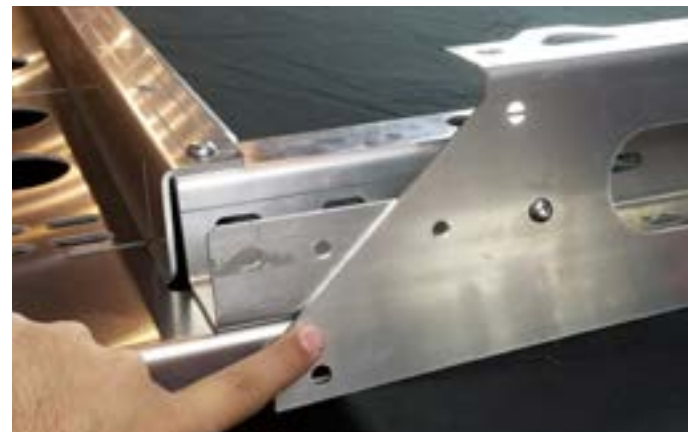


Attach rear reinforcement brace as shown with 5/16" bolts. Repeat on both sides and keep bolts loose.

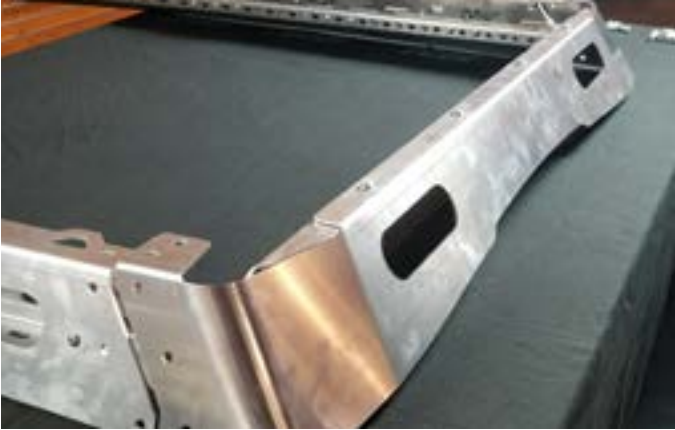


Lay out side fascia pieces and attach with 1/4" bolts (remember to hand tighten but keep loose).

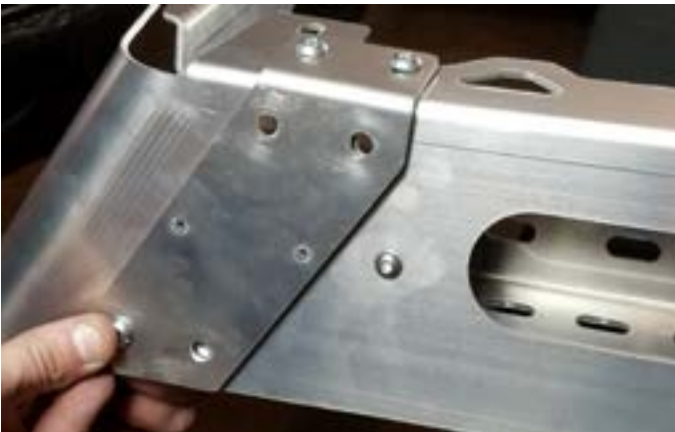
Shallow angle faces towards front end of roof rack as shown in bottom right photo!



Attach rear fascia as shown with 5/16" bolts and nuts.

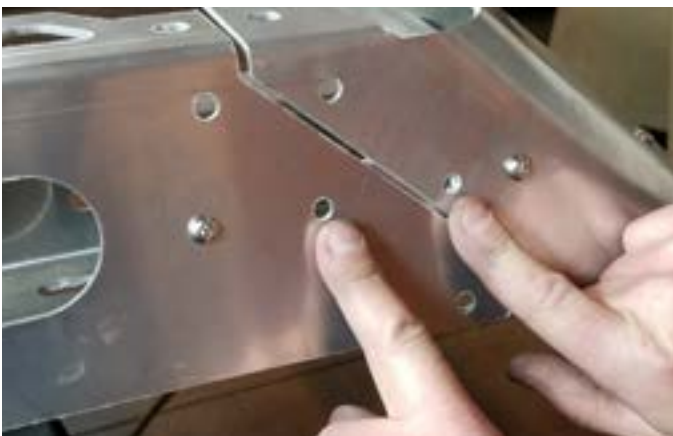
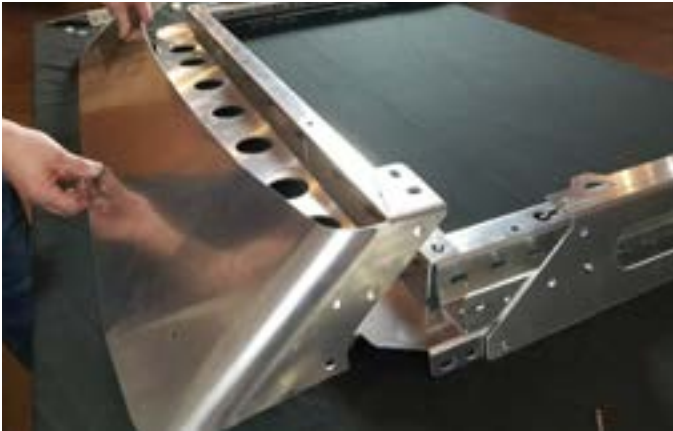


Next attach rear corner connectors with 5/16" bolts shown in photo below. (remember to hand tighten but keep fairly loose!)



Attach front fascia piece shown bottom left photo along with a single spacer piece for each hole.

NOTE: If you bought fascia with light bar cutout, we recommend installing light bar prior to installing front fascia to make things easier.

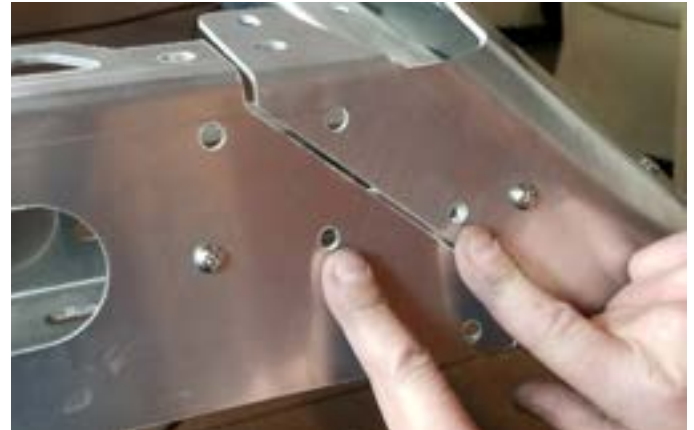


Make sure not to put any bolts in the holes pointed at below!

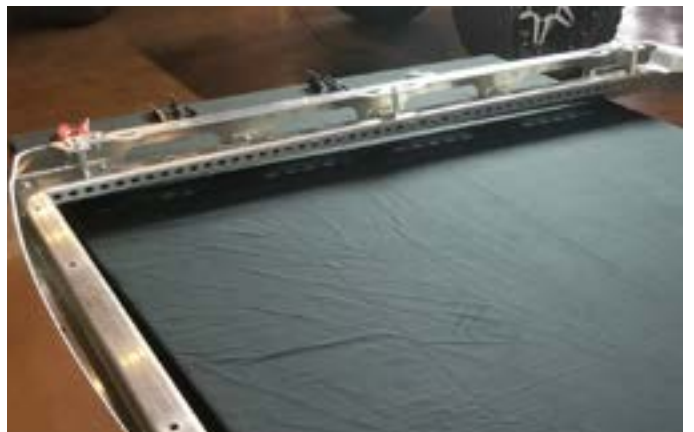


Install the weather stripping to the bottom of front fascia as shown and trim any excess.

Attach front corner connectors as shown with 5/16" bolts and nuts, remembering not to place any bolts in the holes pointed at in image below. (hand tighten bolts but keep relatively loose)



Next, attach reinforcement spacers as shown on all 6 hole locations with provided bolts & nuts. There are three mounting hole locations on each side.





Next, assemble load bars with provided end mounts using nuts and bolts. Keep hand tight but loose.



Flip roof rack on its back and attach load bars into desired locations as shown in photo. Using provided nuts and bolts, you may begin tightening down each load bar with two bolts/nuts for each side of load bars as shown.



Flip over roof rack after all load bars are tightened down with tools and begin tightening all other rack bolts to prepare to mount onto vehicle.

### Mount Installation

Attach clips onto support brackets as shown in photo to right. Also shown is where the bolts go when mounted to roof.

Remove stripping on each side of vehicle and cut a small portion of it to allow fitment for mount as shown below.



Peel off and place provided 3M strips, covering the holes as shown.



Place the mount back into place and push the bolts through the holes and 3M tape. The exception to this for the bolts are the front mounts. These are held into place with the same bolts that hold the rack onto the brackets

\*NOTE\* - when placing mount brackets, be sure to slide all 4 mounts towards center of vehicle before completely tightening down bolts. This helps provide clearance from the body of vehicle and the roof rack.

Begin tightening down both bolts for the rear brackets. Place weather stripping back on, making sure you had cut a small section of it shown in previous page.

Once all mounts are in place, carefully place the roof rack onto the roof with a friend to line up with the mount brackets. Begin placing the provided bolts and washers into the front brackets first as these bolts are the same ones that also secure the bracket down into the roof rack. The rear use smaller bolts to secure the rack onto the brackets only.



Your all set!

If you have any further questions, please email us at [info@expeditionone.biz](mailto:info@expeditionone.biz) and we'll be happy to help!