



RAM Front Bumper

## SHIPPED ITEMS

- 1-RAM front bumper
- 2-frame mounting brackets
- 2-bumper mounting brackets
- 16-1/2 bolts 11/2" long
- 32-1/2 washers
- 16- 1/2 locking nuts

## NEEDED TOOLS

- Socket Set
- Wrench Set

## LEVEL OF DIFFICULTY



- 1- ALL NEEDED TOOLING INCLUDED IN SHIPMENT
- 2- SOME TOOLS REQUIRED TO ASSEMBLE
- 3- SOME DRILLING REQUIRED
- 4- SOME DRILLING, LIGHT WELDNG AND GRINDING REQUIRED
- 5- HEAVY FABRICATION REQUIRED

Removing the factory bumper (excluding the Turbo Diesel models):

Under the vehicle:

- 1) Unplugged the factory fog lights if equipped.
- 2) Remove the 4-nuts from the factory frame mounts and the slide the bolts out (this hardware will be reused).
- 3) Lift and remove the factory front bumper.



Removing the factory bumper (Turbo Diesel models):

Under the hood: (removing the grille is the easiest way to unbolt the four bumper mounting bolts.)

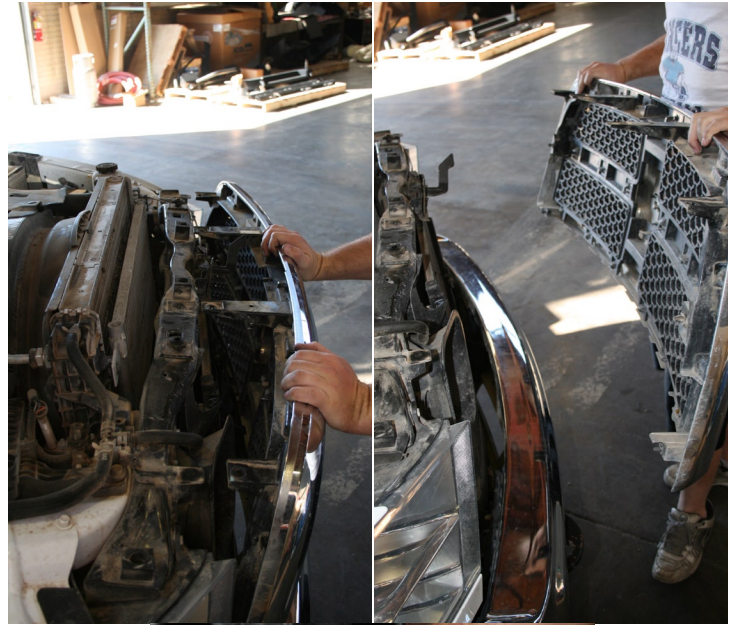
- 1) Remove the (heavy duty) cover that is between the grille and the upper radiator support. By releasing the four pins.



- 2) Remove the four bolts that hold the grille in place.



3) Remove the grille by pulling it towards the front of the vehicle to release the retaining clips. (easiest way is to give a quick hard pull.)



Under the vehicle:

- 4) Unplug the factory fog lights if equipped.
- 5) Remove the 8-bolts that hold the bumper to the factory frame mounts.
- 6) Lift and remove the bumper.



7) Remove the Passenger side intercooler hose clamp and disconnect the hose from the intercooler.



8) Remove the 4-bolts mounting the intercooler to the frame.

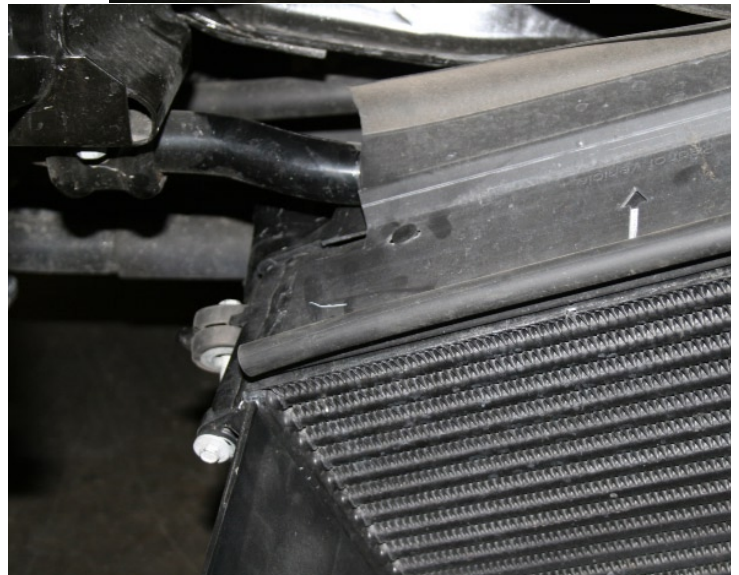


9) Remove the 4-nuts from the factory (bumper to frame) mounts.



10) Move the intercooler as needed to be able to remove the frame mounting hardware. (this hardware will be reused) Positioning the intercooler as shown will allow for the easiest removal and install of the driver side frame mounting bracket.

11) Remove the frame mounts from the vehicle.

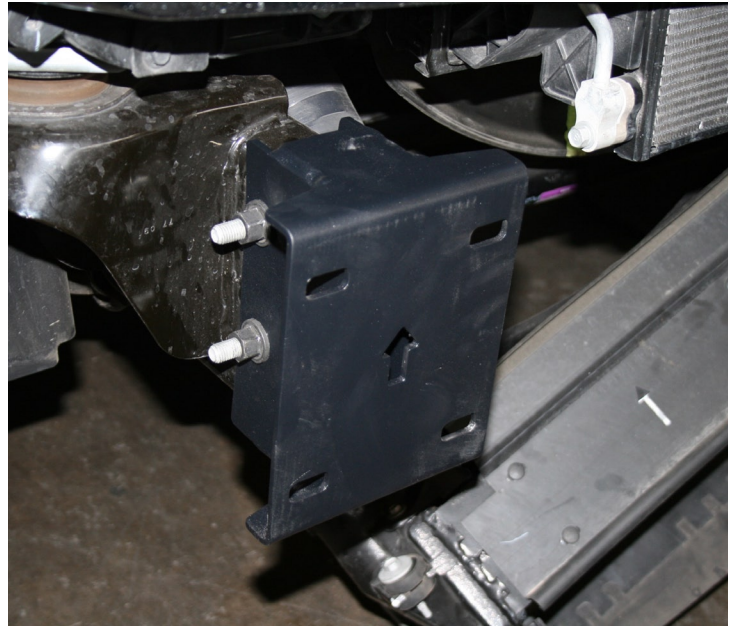


Installing the New bumper:

Notice: during the installation of the bumper it is recommended to only tighten the hardware mounting the bumper and brackets hand tight as to allow for centering and leveling the bumper.

12) Install the Expedition One Frame mounting brackets with the arrow pointing up. Using the factory hardware (hand tight only).

If you are not working on a turbo diesel please skip to step # 18



13) Remount the intercooler to the frame.

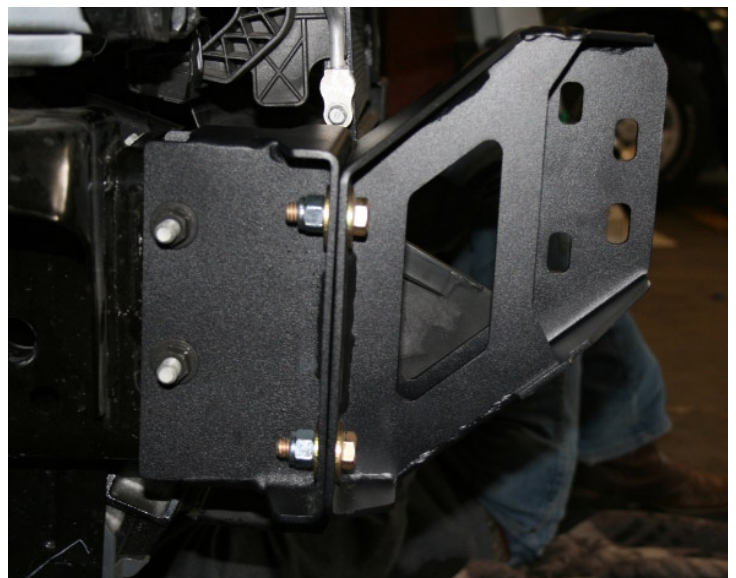
14) Reconnect the intercooler hose and tighten the hose clamp.

15) Remove the shroud on the front of the intercooler by removing the four bolts.

16) Install the grille by aligning the 4 -push retainers and pushing them into place and install the 4-bolts on the top of the grille.

17) Install the (heavy duty) cover using the 4-christmas tree pins removed earlier.

18) Install the New bumper mounting Brackets with washers on both sides of the brackets (hand tight only).



- 19) With help lift the bumper into place and start a bolt on each side of the bumper to hold it in place while starting the rest of the hardware.
- 20) With help lift and center the bumper on the truck.
- 21) Tighten all the bolts on the bumper.
- 22) The bolts need to be checked and retightened after your first off-road journey or 100 miles.



POST INSTALLATION INSTRUCTIONS

REGULARLY REQUIRED MAINTANANCE

LEGAL DISCLAIMER