

SLIM REAR BUMPER

20+ JEEP GLADIATOR JT

RBGL-12



TOOLS REQUIRED

- T-50 Torx Head Socket
- #4 Allen Head Sockets
- 15, 16, 18, 21mm Socket
- 10, 21mm Wrenches
- Snips/Scissors
- File/grinding tool
- Trim Clip Tool

SKILL LEVEL

- Novice/Intermediate
- 2-3 Persons

Little skill level required, however, assistance is required for removal and installation of bumpers.

TIME REQUIRED

- 3.5 Hour

Time to install this should only take about three and a half hours.

WARNINGS/CAUTIONS BEFORE STARTING INSTALLATION

Before you install this kit – Read and understand all instructions, warnings, cautions, and notes contained in this installation instruction guide. Consult your vehicle owner's manual for proper disconnection of electrical and lifting of vehicle if required for installation of this product.

This install may require some technical skills and knowledge of basic mechanical work. If you do not feel that you are capable of performing this install please take this product to a trained professional.

After reading this guide please contact us with any questions or concerns before installing product.
Customer Service: 855-680-9595

DV8 Offroad is not responsible for any bodily injury or harm to you or your vehicle as a result of an improper install.

Proper installation of this kit required knowledge of the factory recommended procedures for removal and installation of original equipment components. We recommend that the factory shop manual and any special tools needed to service your vehicle be on hand during the installation. Installation of this kit without proper knowledge of the factory recommended procedures may affect the performance of these components and the safety of the vehicle

- Always wear eye protection when operating power tools

Inspect all contents of this package to make sure product is not damaged and all installation hardware has been included. If parts are missing from kit, please be prepared to provide the following information

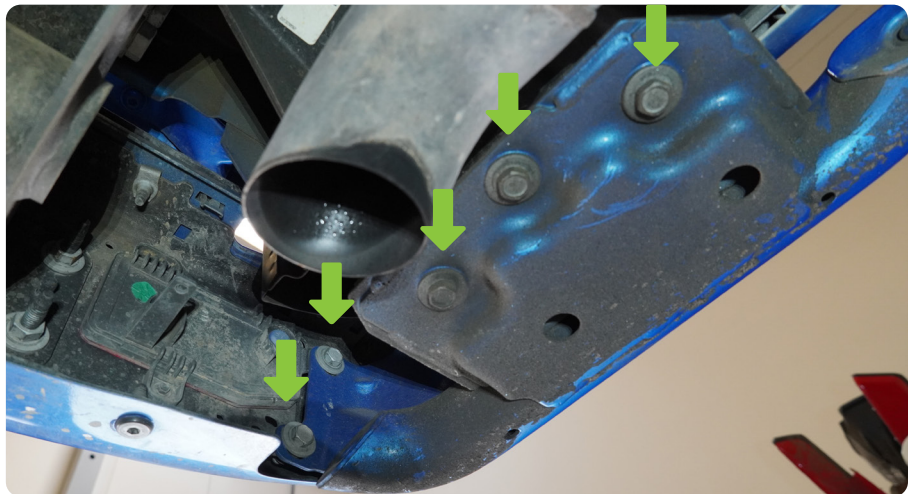
1. Name of purchase location
2. Bar Code on side of box
3. Date above bar code
4. Date inside box cover



INSTALLATION MANUAL

STEP 1 | If equipped with factory bed sliders, use a 15mm socket to remove the bottom bolts dropping bottom part of slider.

If the truck is not equipped with these, skip to step 3.



STEP 2 | Repeat on other side.



INSTALLATION MANUAL

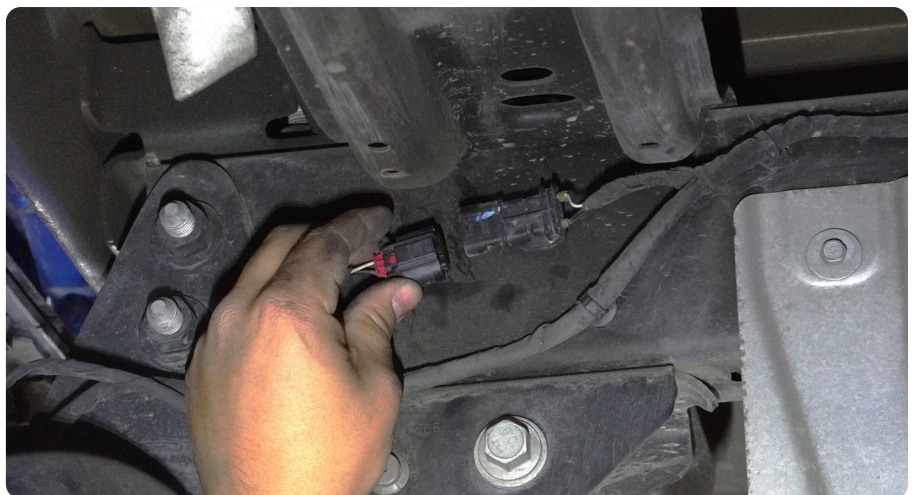
STEP 3 | Remove trailer plug wiring. Squeeze tab on plug and pull away. They can be difficult, so go slow and ensure no damage to plug.



STEP 4 | At the top of the driver side frame rail is the main bumper harness.

Remove by pulling the red locking clip back and gently pulling the plug so as not to damage the wiring.

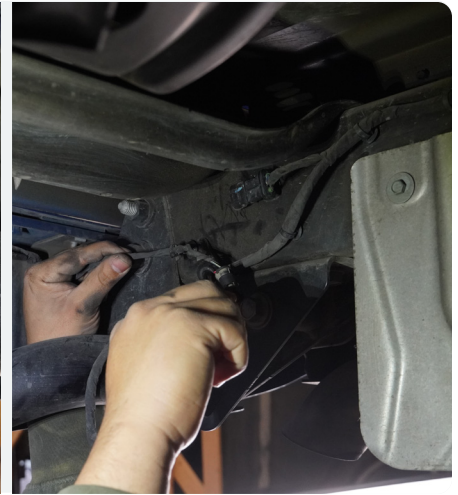
Use a trim clip tool if necessary.



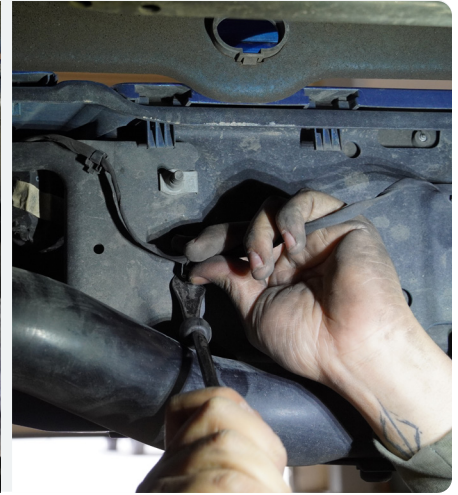
INSTALLATION MANUAL

STEP 5 | Unclip the main harness from the frame or any other mounting points that may get caught in the bumper removal process.

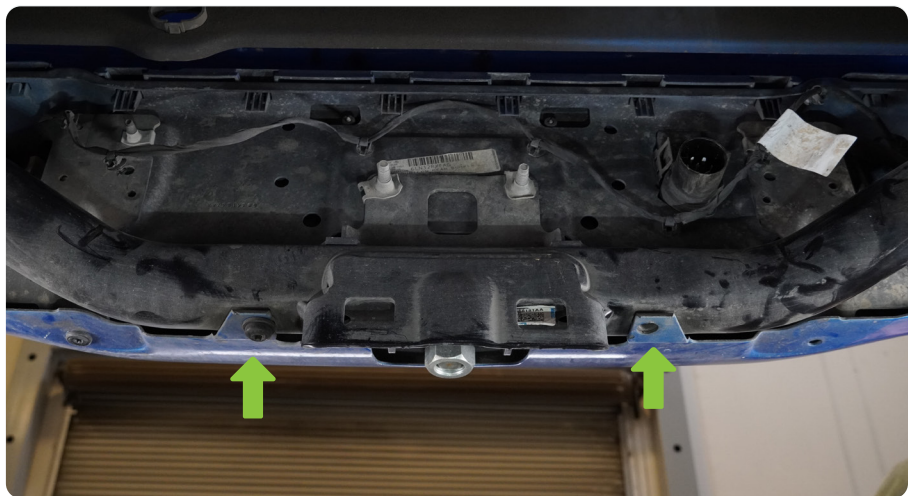
This will vary depending on the options the truck has (sensors, towing package, etc.).



STEP 6 | If the vehicle does not have parking sensors, remove the wiring harness and set it off to the side for preparation of the installation onto the DV8 bumper.



STEP 7 | Remove the two T50 torx bolts on the bottom of the bumper.



INSTALLATION MANUAL

STEP 8 | Remove the rear license plate to access the two 16mm bolts attaching the bumper to the hitch.



STEP 9 | If equipped with a bumper mounted hitch ball, remove this at this time.

If equipped with the factory Class III hitch, you can skip this step.



STEP 10 | Using the 16mm socket, remove the four bolts ((2) on each side), holding the bumper to the hitch.

Note: The bumper will become loose from the vehicle. Use extra caution to prevent damage or possible injury.

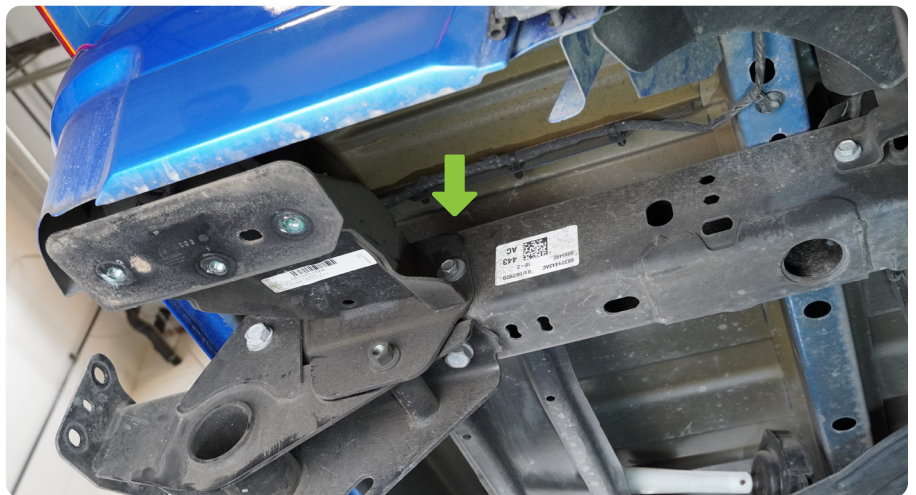


INSTALLATION MANUAL

STEP 11 | With assistance, remove the bumper from the vehicle and set off to the side on a soft surface.



STEP 12 | If equipped with factory bed slider mounts, use a 16mm and 18mm socket to remove the bolts securing the mounting brackets.



INSTALLATION MANUAL

STEP 13 | Using a push pin removal tool, remove the harness from the bumper. The amount of pins will vary depending on if equipped with sensors or not.



STEP 14 | Remove factory 4/7pin trailer plug by pushing in both sides of the metal clip to release the plug.



INSTALLATION MANUAL

STEP 15 | Use an allen bit to remove the hardware securing the bumper to the hitch.

Tool required may vary based on vehicle.



STEP 16 | Use a 21mm socket with a 22mm wrench to remove the hardware securing the hitch to the vehicle. Use assistance to support the hitch while the hardware is being removed.

Note: Assistance is recommended to prevent injury and damage to the product or vehicle.



INSTALLATION MANUAL

STEP 17 | If you are running the RBGL-12H accessory hitch, remove the spare tire and heat shroud from the factory tire carrier location.

This must be re-located.

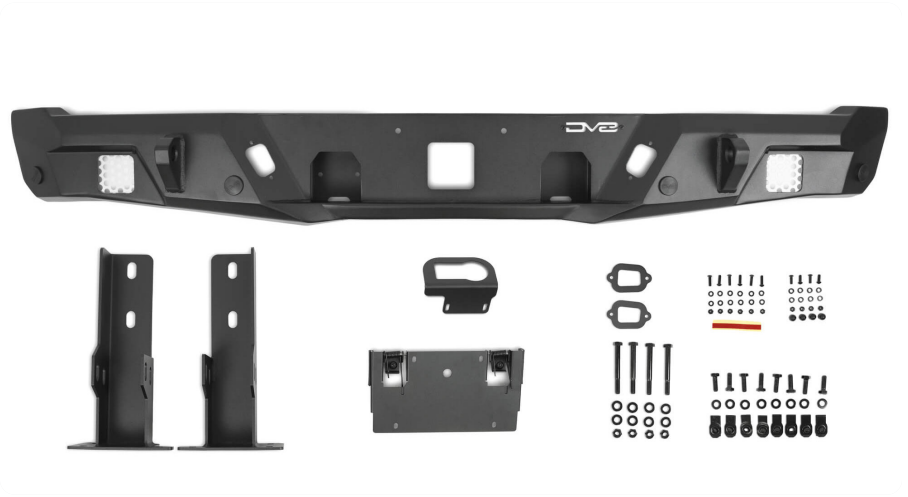


INSTALLATION MANUAL

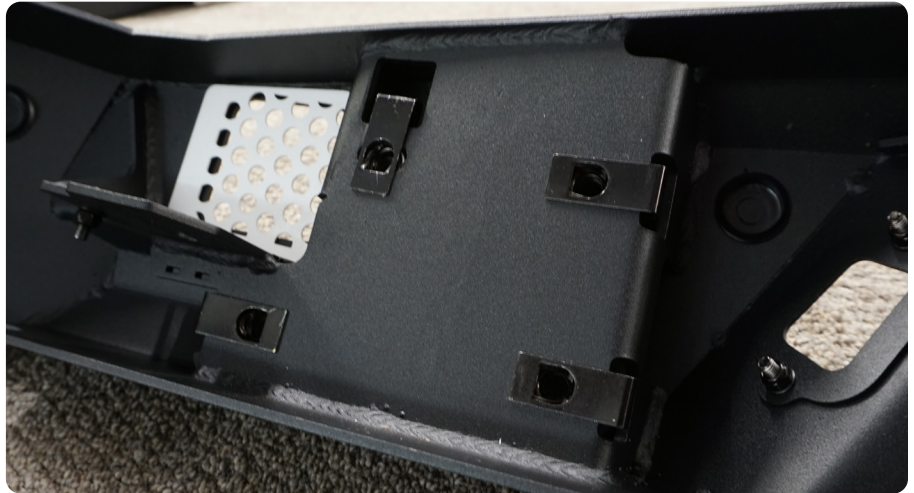
Begin by unpacking all items and inspecting for missing pieces or damage. If you have any concerns, please contact the company the product was purchased from. Extra hardware may be included with the product.

HARDWARE INCLUDED

- (8) M10x30 Hex Bolt
- (8) M10 Nut Clips
- (8) M10 Flat Washers
- (6) M6x20 Allen
- (4) M6x16 Allen
- (20) M6 Flat Washers
- (10) M6 Nylon Lock Nuts



STEP 18 | Install the (8) M10 provided nut clips on to the bumper by pressing them into place.



INSTALLATION MANUAL

Loosely secure the bumper mounts to each side using the provided M10 hardware and a 16mm socket.

Transfer the bumper wiring harness onto the vehicle by routing it through/over the mounts as necessary.

Use zip ties to secure the wiring using the welded-in zip tie tabs.



STEP 19 | Using a 10mm wrench, #4 allen bit and the provided M6 hardware, attach the trailer plug mount (if equipped).

If running pod lights, install them at this time using the hardware provided with the lights.



INSTALLATION MANUAL

STEP 20 | Disconnect the wiring connector from the license plates on the factory bumper.

Press the release tab and pull to remove.

Use a trim clip tool if necessary.



STEP 21 | There are four tabs on the outside of the license plate light. Three of four need to be lifted for light to be removed.

Once three of the four tabs are pulled back like shown, push the light towards the face of the bumper to remove.



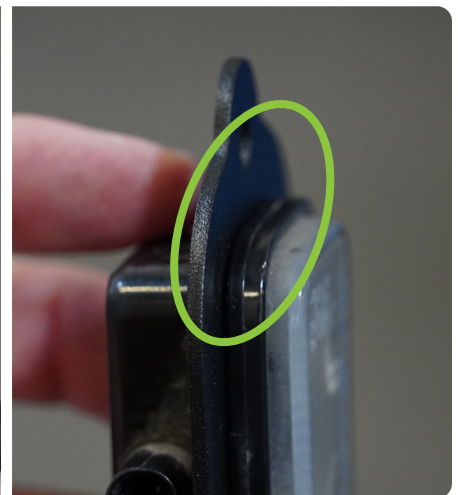
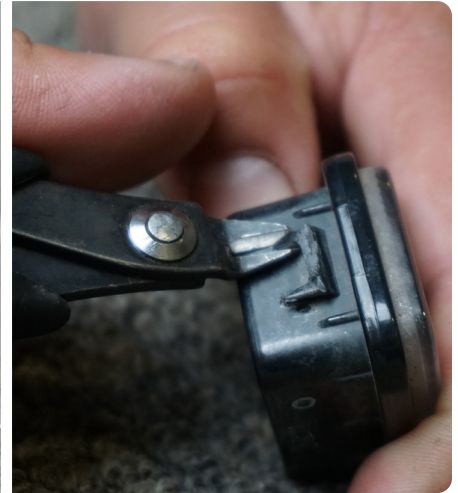
STEP 22 | Push on tap to release light from housing.



INSTALLATION MANUAL

STEP 23 | Use snips or a blade to trim down the tab on the top of each light.

Then use a file to remove any remaining material. The tab must ground down completely flush with the light assembly.



INSTALLATION MANUAL

STEP 24 | Install the factory license plate lights on the DV8 bumper by pressing them into place.



STEP 25 | Using a #4 allen bit and the provided M6 hardware, install the license plate holder.



INSTALLATION MANUAL

STEP 26 | If you are not installing the RBGL-12H accessory hitch-- With assistance, lift the bumper to the vehicle and loosely secure using the provided M14 and factory hardware.

If you are installing RBGL-12H along with the bumper it is recommended that two people assist.

- One person will hold bumper/frame horn assembly up to the frame rails
- One person will lift the acc. hitch up from below the vehicle, sandwiching the bumper/frame horn and against the frame rails
- The last person will slide the M14 hardware through the frame and then loosely thread the M14 hardware into the bottom of the frame rail.

Note: Assistance is recommended to prevent injury and damage to the product or vehicle.



STEP 27 | Adjust the in-out position of the bumper/hitch and secure all (4) provided M14 hardware using a 21mm socket and 22mm wrench.



INSTALLATION MANUAL

STEP 28 | Secure the lower portion of the bumper using a 21mm socket and factory hardware.



INSTALLATION MANUAL

STEP 29 | Align the bumper to your preference and secure the hardware holding the bumper to the frame horns using a 16mm socket.



INSTALLATION MANUAL

STEP 30 | Install trailer plug housing and reconnect trailer plug and rear license plate lights.



STEP 31 | Double Check that all hardware is secure.

Congratulations, installation of the DV8 Slim Rear Bumper is complete.

