

# INSTALLATION MANUAL

## Level of Difficulty

Easy

Installation difficulty levels are based on time and effort involved and may vary depending on the installer level of expertise, condition of the vehicle and proper tools and equipment.

## Parts List

Qty	Description
1	Driver / left running board
1	Passenger / right running board
14	Hex bolt, M8
21	Flat washers, M8
7	Lock washers, M8
7	Clips, M8
7	Nylock nut, M8

## Tools Required

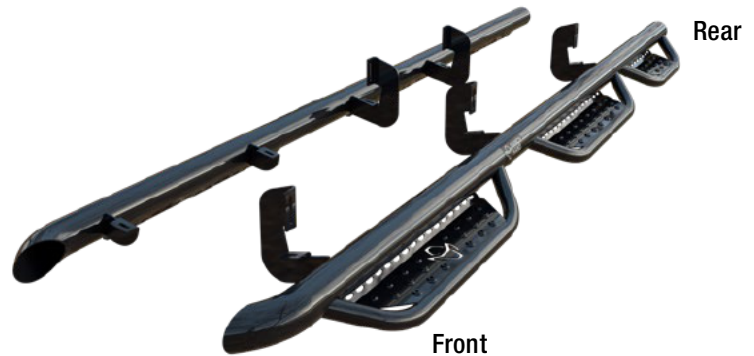
Socket, 1/2"	Torque wrench
Wrench, 1/2"	Screwdriver
Ratchet, 3/8"	--

## Torque Specifications

M8 bolt	30 ft-lbs.
---------	------------

Use above torque setting unless otherwise noted

## Product Photo



## Product Photo



## NOTICE

Visit [www.ranchhand.com](http://www.ranchhand.com) for a full-color copy of this instruction manual, as well as helpful videos, guides and much more!

Before you begin installation, read all instructions thoroughly.

Proper tools will improve the quality of installation and reduce the time required.

Periodic inspection of your product should be performed to ensure all hardware and / or components remain secure.

To help prevent damage to the product or vehicle, refer to the specified torque specifications when securing hardware during the installation process.

## Maintenance

Mild automotive detergent may be used to clean the product. Do not use dish detergent, abrasive cleaners, abrasive pads, wire brushes or other similar products that may damage the finish.

## Product Registration and Warranty

Ranch Hand stands behind our products with industry-leading warranties. To get copies of the product warranties, register your purchase or provide feedback, visit: [warranty.curtgroup.com/surveys](http://warranty.curtgroup.com/surveys)

### Step 1

Remove factory running boards and hardware (if applicable).

---

### Step 2

Begin by locating the driver-side running step. The largest step will be placed towards the front of the vehicle.

---

### Step 3

With the correct step placed on each side of the vehicle, take note of where the brackets are located. Look under the vehicle and locate the factory supplied mounting positions.

**Note:** Some vehicles require the use of clips and nuts, which are supplied in the hardware kit.

---

### Step 4

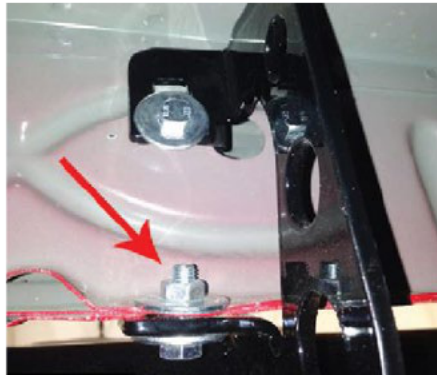
If your vehicle requires the use of clips, install them now. This will require the removal of a plastic body plug. Using a screwdriver, remove the plug and install one of the supplied clips.



### Step 5

Align the steps with the mounting holes. Beginning from the front, install the steps using an M8 hex bolt and fender washer for each mounting hole location.

**Note:** Some vehicles require the use of an additional nut and washer for the lower portion of the mounting bracket as seen in the photo to the right. The nuts and washers are supplied with the bolt kit.



### Step 6

After final positioning, start at the front of the vehicle and tighten the lower part of the bracket to the recommended torque specifications listed on page 1. Continue this until all of the lower bolts have been tightened, then move to the top bolts and repeat the process.

---

### Step 7

Repeat steps 2 through 6 on the passenger side of the vehicle.

To protect your investment, see the 'Notes and Maintenance' section on page one.

Congratulations on the installation of your new Ranch Hand™ running steps.

---