

INSTALLATION MANUAL

Level of Difficulty

Easy

Installation difficulty levels are based on time and effort involved and may vary depending on the installer level of expertise, condition of the vehicle and proper tools and equipment.

Parts List

Qty	Description
1	Driver / left running board
1	Passenger / right running board
6	Bolt plate
24	Bolt, M8
24	Flat washer, M8
12	Serrated flanged nut, M8
12	Lock washer, M8

Tools Required

Socket, 1/2"	Wrench, 1/2"
--------------	--------------

Torque Specifications

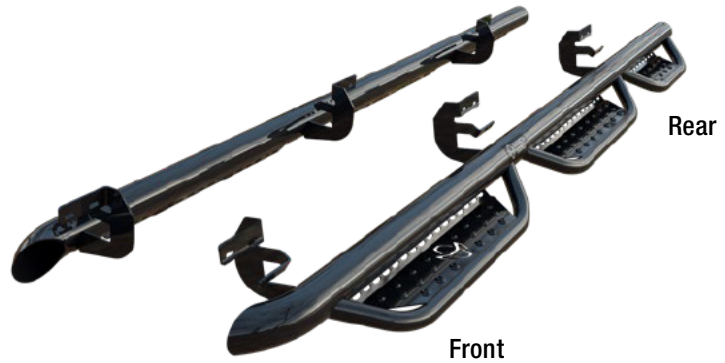
M8 bolt	15 ft-lbs.
---------	------------

Use above torque setting unless otherwise noted

Product Registration and Warranty

Ranch Hand stands behind our products with industry-leading warranties. To get copies of the product warranties, register your purchase or provide feedback, visit: warranty.curtgroup.com/surveys

Product Photo



Product Photo



NOTICE

Visit www.ranchhand.com for a full-color copy of this instruction manual, as well as helpful videos, guides and much more!

Before you begin installation, read all instructions thoroughly.

Proper tools will improve the quality of installation and reduce the time required.

Periodic inspection of your product should be performed to ensure all hardware and / or components remain secure.

To help prevent damage to the product or vehicle, refer to the specified torque specifications when securing hardware during the installation process.

Maintenance

Mild automotive detergent may be used to clean the product. Do not use dish detergent, abrasive cleaners, abrasive pads, wire brushes or other similar products that may damage the finish.

Step 1

Locate the driver side running step.



Step 2

Locate the mounting holes underneath the body and remove the factory tape from the three locations.



Step 3

Insert the supplied threaded U-clips in each mounting location.

Note: Clip orientation will be the same for passenger side.



Step 4

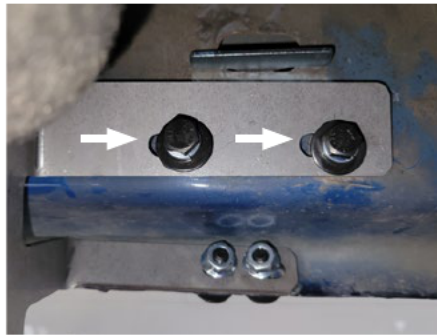
If installing the 6-step, the plastic bed molding may have to be removed if there is contact with the main tube. The bed mount has a 1/4" side-to-side variance from factory on some models. Perform a test fit to determine if this is necessary before proceeding to step 5.



Step 5

Carefully place the step into position and start the upper M8 bolt and flat washer in the center bracket and hand tighten to secure in place.

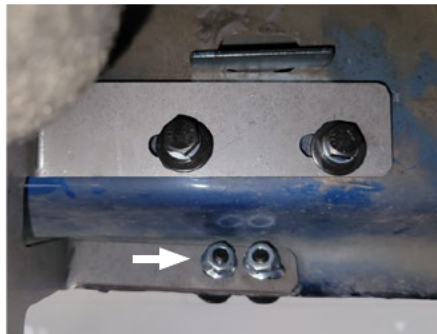
Next, install the remaining M8 bolts and flat washers in the front, rear brackets. Snug the hardware, but do not fully tighten.



Step 6

Insert the M8 x 25mm flanged bolts and M8 flanged nuts in the pinch weld holes. Snug the hardware, but do not fully tighten.

Note: Some older models require drilling.



Step 7

Begin tightening the lower attachment points to 20ft-lbs. starting with the rear bracket working your way up to the front bracket.



Step 8

Finish by tightening the upper attachments points to 20 ft-lbs. from front to back.

Repeat steps 2 through 8 on the passenger side of the vehicle.

To protect your investment, see the 'Notes and Maintenance' section on page one.

Congratulations on the installation of your new Ranch Hand™ running steps.