

## TRAILING ARM SKID PLATES

21-23 FORD BRONCO

SPBR-06



### TOOLS REQUIRED

- T25 "L" Shaped Torx Key (Supplied)
- #6 Allen Head Sockets
- 13mm Socket
- Power Drill
- 25/64" Drill Bit
- Min Sledge/Hammer
- Safety Glasses

### SKILL LEVEL

- Novice/Intermediate
- 1 (you)

Little skill level required, you can easily install it by yourself however, additional help will be useful

### TIME REQUIRED

- 1 Hour

Time to install this should only take about an hour

## WARNINGS/CAUTIONS BEFORE STARTING INSTALLATION

Before you install this kit – Read and understand all instructions, warnings, cautions, and notes contained in this installation instruction guide. Consult your vehicle owner's manual for proper disconnection of electrical and lifting of vehicle if required for installation of this product.

This install may require some technical skills and knowledge of basic mechanical work. If you do not feel that you are capable of performing this install please take this product to a trained professional.

After reading this guide please contact us with any questions or concerns before installing product.  
Customer Service: 855-680-9595

*DV8 Offroad is not responsible for any bodily injury or harm to you or your vehicle as a result of an improper install.*

Proper installation of this kit required knowledge of the factory recommended procedures for removal and installation of original equipment components. We recommend that the factory shop manual and any special tools needed to service your vehicle be on hand during the installation. Installation of this kit without proper knowledge of the factory recommended procedures may affect the performance of these components and the safety of the vehicle

- Always wear eye protection when operating power tools

*Inspect all contents of this package to make sure product is not damaged and all installation hardware has been included. If parts are missing from kit, please be prepared to provide the following information*

1. Name of purchase location
2. Bar Code on side of box
3. Date above bar code
4. Date inside box cover



# INSTALLATION MANUAL

Begin by unpacking all items and inspecting for missing pieces or damage. If you have any concerns, please contact the company the product was purchased from. Extra hardware may be included with the product.

## HARDWARE INCLUDED

- (4) M10x35mm Bolts
- (4) M10 Flat Washers
- (4) M10 Split Washers
- (4) Aluminum Spacers
- (1) T25 "L" shaped Torx Key

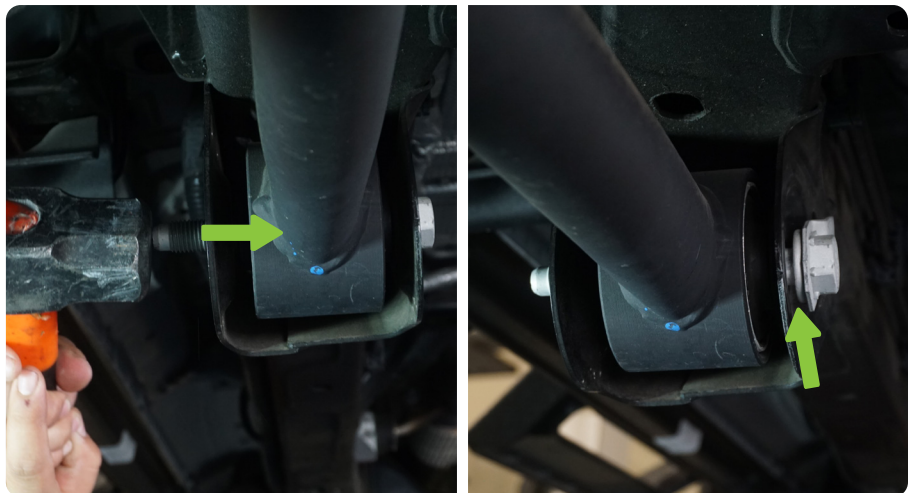


**STEP 1** | Driverside installation--Use a 24mm socket to remove the trailing arm nut.



**STEP 2** | Use a Mini Sledge Hammer to hit the Torsion Bar bolt out a quarter of the way.

Do not remove Torsion Bar bolt.



# INSTALLATION MANUAL

**STEP 3** | Using a 25/64" drill bit, bore out the smaller hole on the factory trailing arm mount.

Keep drill as straight as possible.



**STEP 4** | Loosely secure the DV8 Trailing Arm Skid Plate to the trailing arm bolt.





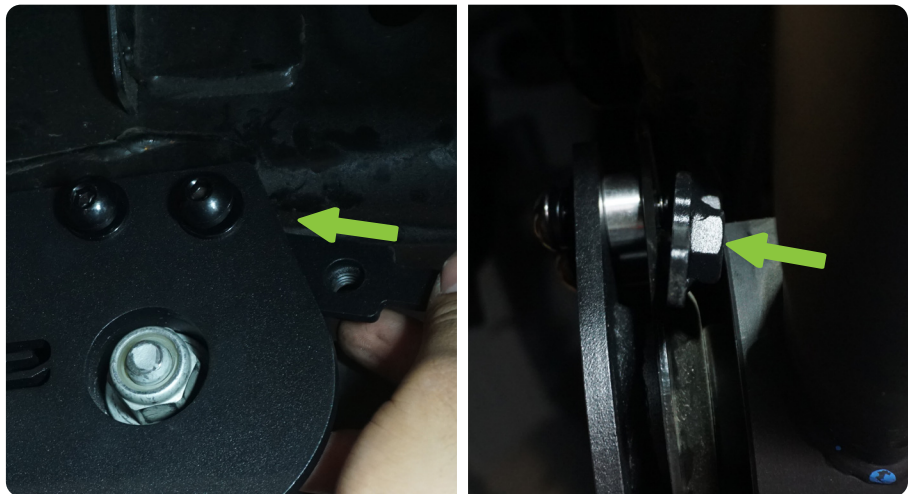
# INSTALLATION MANUAL

**STEP 5 |** Using provided spacers, Place the spacers between the factory trailing arm mount and the DV8 Trailing Arm Skid Plate.

Pro tech tip: Use provided M10 Hardware to hold spacers in place.



**STEP 6 |** Slide the provided Nut Plate behind the factory trailing arm mount.



**STEP 7 |** Secure the M10 Allen head bolts to the Nut Plate using a #6 Allen bit.



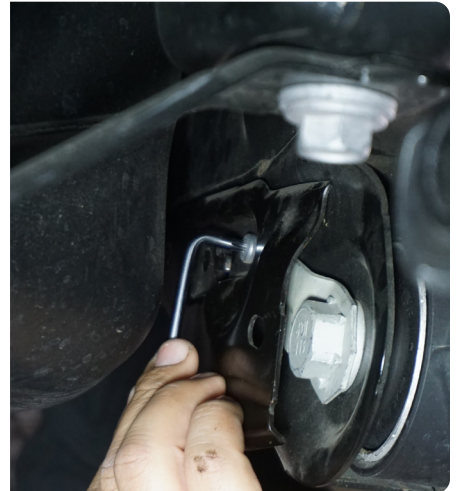
# INSTALLATION MANUAL

**STEP 8 |** Secure factory torsion bar nut to factory torque specs.

Torque to 159 FT-LBS



**STEP 9 |** Passenger side installation  
---(Plastic fuel tank skid plate equipped):  
Using the provided T25 Torx key remove the (2) factory torx screws and plate.





# INSTALLATION MANUAL

**STEP 10** | Passenger side installation (Metal Fuel Tank Skid Plate Equipped): Remove the factory plate gusset located on the inside face of the frame rails.

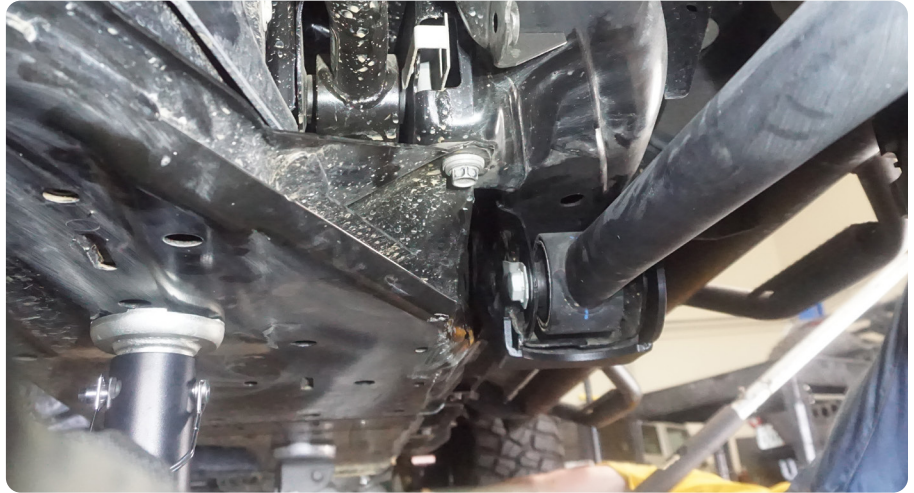
On the passenger side it is located between the frame rail and the gas tank.

To access the bolts, the gas tank will be slightly lowered down and slightly swung towards the driver-side.

Identify the bolt that will stay in place to support the gas tank (circled in green). While lowering the tank, swing the tank towards the driver-side.

If the vehicle has gas tank straps instead of a skid plate, the method for lowering the gas tank may differ. Be sure the gas tank is supported with a floor-jack before removing any tank straps.

**IT IS POSSIBLE TO INSTALL THIS WITH A FULL TANK OF GAS, BUT WE HIGHLY RECOMMEND HAVING THE GAS TANK AS CLOSE TO EMPTY AS POSSIBLE.**



**STEP 11** | Use an 18mm socket to remove (3) bolts along the passenger frame rail and (2) bolts securing the skid plate to the front cross member.





# INSTALLATION MANUAL

**STEP 12** | Use an 18mm socket to remove the bolt securing the gas tank skid plate located **under** the rear driveshaft.

Set all hardware off to the side for re-installation.



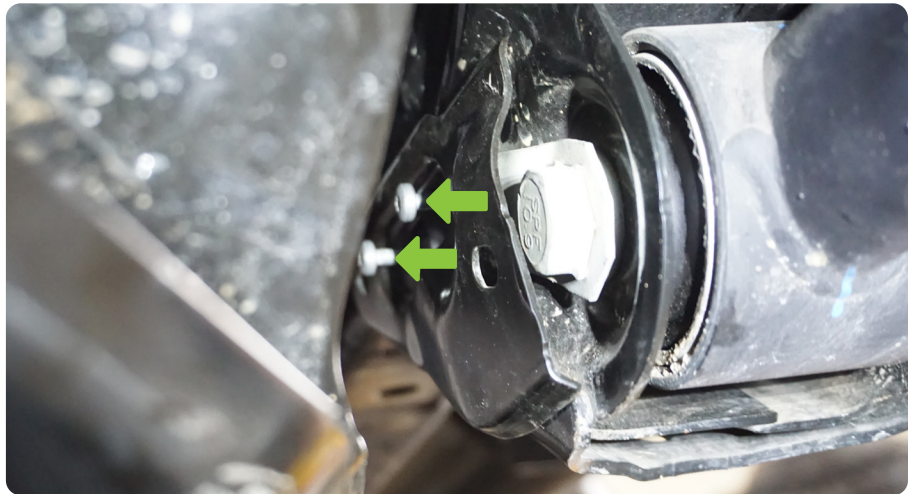
**STEP 13** | Ensure the bolt above the rear drive shaft is secure, then carefully lower the floor-jack(s) allowing the gas tank/skid to come down and swing to the driver-side slightly.

Lower the tank/skid-plate until there is enough clearance to use the provided T25 tool.



# INSTALLATION MANUAL

**STEP 14** | Use the provided “L” shaped T25 Torx key to remove the (2) factory bolts and then remove the factory plate.





## INSTALLATION MANUAL

**STEP 15** | Use the floor-jack to lift the gas tank/skid-plate back into place, loosely thread all factory tank/skid-plate hardware back into place.

There are (6) factory bolts in total to reinstall.

Once all hardware is threaded loosely, secure all tank skid-plate hardware using an 18mm socket.

Torque all bolts to 59 ft-lbs.



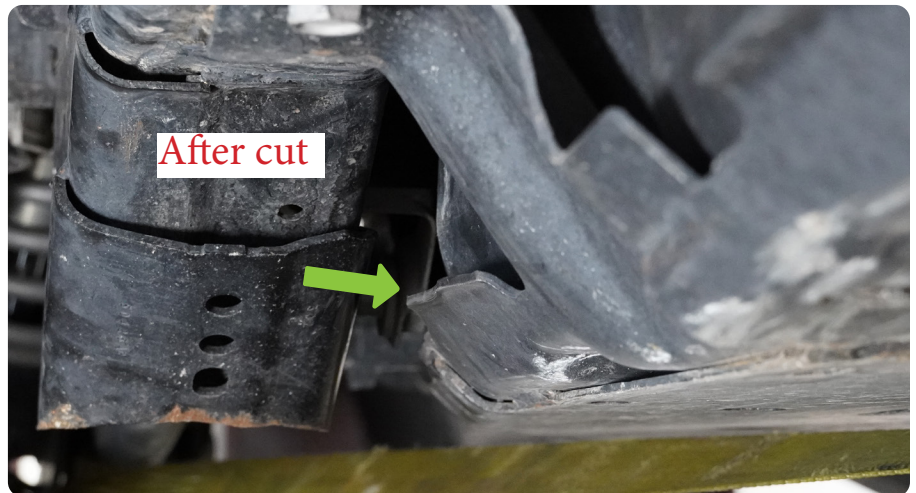
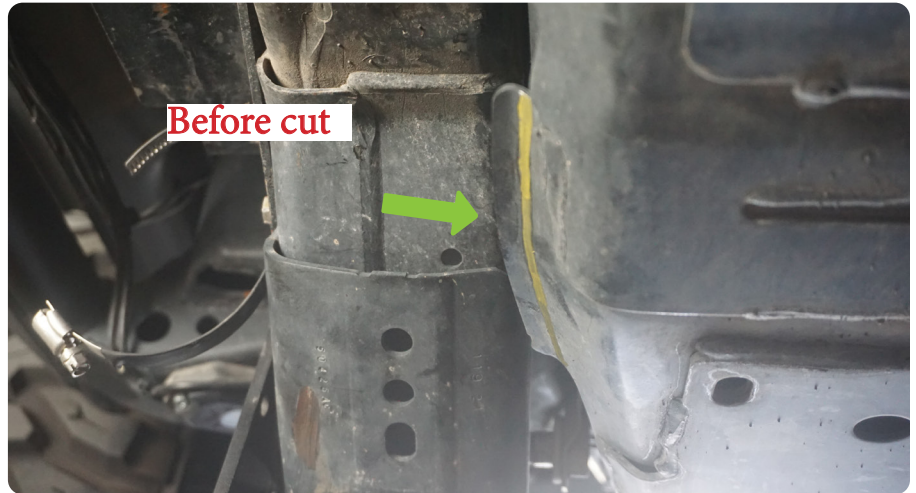
## INSTALLATION MANUAL

**STEP 16** | Some gas tank skid-plates have a lip that sticks out in front of the frame-side control arm mount, this will vary based on the vehicle.

This lip will need to be removed prior to installation.

Mark a line similar to what is shown and trim down the lip using your preferred cutting tool. Use spray paint to cover any exposed metal to prevent corrosion.

The goal is to remove the flared lip.





# INSTALLATION MANUAL

**STEP 17** | Follow steps 1-8 to complete installation of the DV8 Trailing Arm Skid Plate on the passenger side.



**STEP 18** | Double check at all hardware is secured and both torsion bar nuts are torqued to 159FT-LBS.

Congratulations, installation of the DV8 Bronco Trailing Arm Skid Plates is now complete.

