

# INSTALLATION GUIDE

5-15 Tacoma Standard/High-Clearance Rear Bumper



**EXPEDITION ONE**  
OFF-ROAD RESEARCH & EQUIPMENT

SKIP TO STEP 7 IF RUNNING STANDARD/DUAL REAR (NON-HIGH CLEARANCE)

1

We'll first start by cutting off the bottom portion of the rear and sides of the stock bumper. Mask off where the bumper plastic angles outwards (see below) as your cutting line. We will be cutting the top of the blue masking tape. You will also angle the tape at a 45 degree angle towards the rear as shown.



We will also need to remove some of the plastic clips inside the fender well to pull away the inner fender flap so we don't cut into it.

2



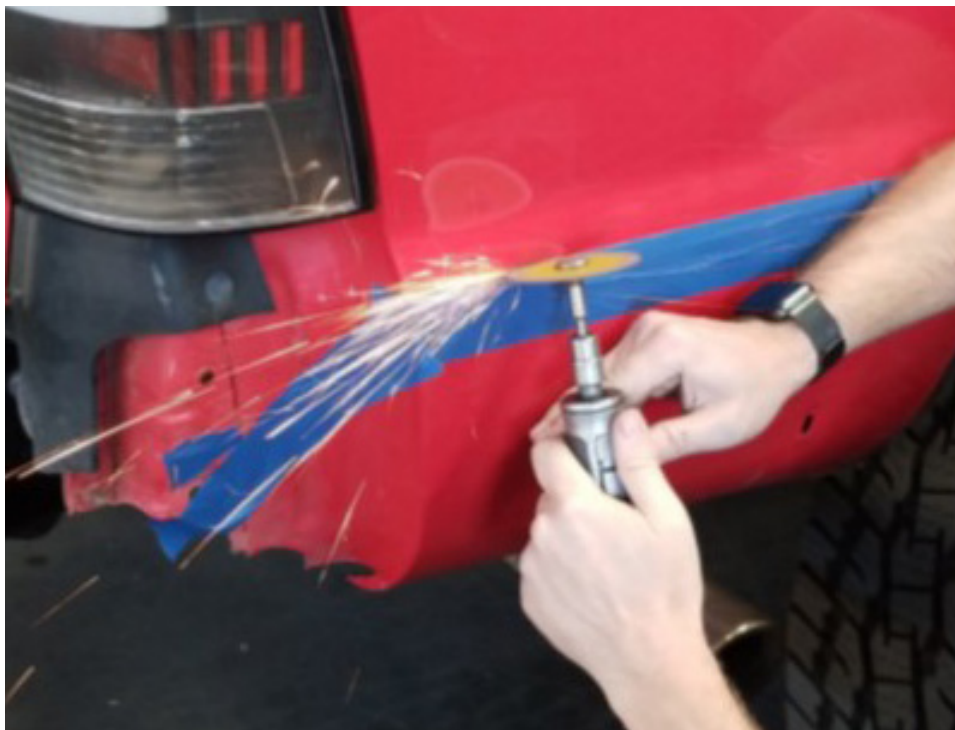
3

Reference photo of the inner fender pulled away so we can begin trimming bumper.



We can now begin cutting the lower portion of the bumper off. Carefully follow the top of the masking tape.

4



5



We will also need to remove this reinforcement piece inside each fender well

6



7

At this point, you can now remove the stock bumper from vehicle.



Next, we'll take the frame reinforcement brackets starting with the driver's side and attach to the frame of vehicle. You'll be re-using two stock frame bolts you removed to take stock bumper off and (1) provided 1/2" bolt, nut and washer.

8



9

Below is another reference shot with the frame bracket loosely attached to vehicle frame. You will want to keep these hand-tight but still fairly loose to allow for bumper adjustment. Repeat step 2 for passenger side bracket.



We're now ready to place the bumper onto the frame brackets. From here, you'll use 1/2" bolts, washers and nuts on each side to secure bumper into place. You can tighten down these bolts once you are happy with proper spacing all around. Go ahead and tighten down the internal frame bracket bolts as well. (pictured above)

10



## STEPS 11 & 12 FOR HIGH-CLEARANCE REAR BUMPER ONLY

11

Next, we'll need to take the side frame brackets starting with the drivers side rear wheel well. Attach with (2) 1/2" bolts, washers and nylock nuts (see below)



On the other end of the bracket (shown below) we'll need to secure that to the bumper that wraps around the side of vehicle. Secure these with the included 3/8" bolts, nuts and washers.

12

Once all brackets are loosely secured, go ahead and tighten all frame and bumper bolts down while having someone check for proper bumper placement and spacing from the vehicle.



## Swing Arm Tire Mount Install

Lay your spare tire on the ground and set the tire mount into place. Now set the arm on top of it, marking the height when the arm is flat across it.



Flip arm over and position your tire mount into position. Tighten into place 1/4" past where you marked your lines.

\*You'll add the tire after the entire install process is complete and everything is secure.



Using marine-based lithium grease, grease your bearings.





Place your greased bearing into the bottom of the arm as shown.



Now place grease seal as shown inside the bottom of the arm.



Place arm into position, holding the bearing/grease seal with hands, onto the spindle.

You will need to wiggle until it drops into place. You may also swing it back and forth a few times to get it to set properly into place.



Add your top bearing and drop it into the arm as shown.



Drop provided washer into place



Drop your large bolt into place and tighten down into place till its nice and tight. Then nudge it back a hair so it won't bind.



Repeat these steps for the other arm.



Using anti-seize provided, paste it around the threaded area of cap.



Attach cap onto spindle and tighten down. You may need to twist counter clockwise while applying pressure until you hear a click -- then tightn down clockwise.



LATCH SYSTEM INSTALL & ADJUSTMENT (SEE SEPARATE GUIDE) OR VISIT --

[WWW.EXPEDITIONONE.COM](http://WWW.EXPEDITIONONE.COM) > RESOURCES > INSTALL GUIDES > DUAL SWING LATCH SYSTEM

[https://www.exp-one.com/wp-content/uploads/2018/12/latch\\_install\\_v1.pdf](https://www.exp-one.com/wp-content/uploads/2018/12/latch_install_v1.pdf)