

UNIVERSAL BED MOUNT

UNBM-01



TOOLS REQUIRED

- 10,15,17,19mm Sockets
- Drill bit (15/16"--1-1/8")
- #4,5 Allen tool/Bit
- Safety Glasses
- Gloves

SKILL LEVEL

- Novice/Intermediate
 - 1 (you) to 2 persons
- Little skill level required, you can easily install it by yourself however, additional help will be useful

TIME REQUIRED

- 1.5 Hours
- Time to install this should only take about an hour and a half

WARNINGS/CAUTIONS BEFORE STARTING INSTALLATION

Before you install this kit – Read and understand all instructions, warnings, cautions, and notes contained in this installation instruction guide. Consult your vehicle owner's manual for proper disconnection of electrical and lifting of vehicle if required for installation of this product.

This install may require some technical skills and knowledge of basic mechanical work. If you do not feel that you are capable of performing this install please take this product to a trained professional.

After reading this guide please contact us with any questions or concerns before installing product.
Customer Service: 855-680-9595

DV8 Offroad is not responsible for any bodily injury or harm to you or your vehicle as a result of an improper install.

Proper installation of this kit required knowledge of the factory recommended procedures for removal and installation of original equipment components. We recommend that the factory shop manual and any special tools needed to service your vehicle be on hand during the installation. Installation of this kit without proper knowledge of the factory recommended procedures may affect the performance of these components and the safety of the vehicle

- Always wear eye protection when operating power tools

Inspect all contents of this package to make sure product is not damaged and all installation hardware has been included. If parts are missing from kit, please be prepared to provide the following information

1. Name of purchase location
2. Bar Code on side of box
3. Date above bar code
4. Date inside box cover



INSTALLATION MANUAL

Begin by unpacking all items and inspecting for missing pieces or damage. If you have any concerns, please contact the company the product was purchased from. Extra hardware may be included with the product.

HARDWARE INCLUDED

- (5) M12x40 Carriage Bolts
- (5) Carriage Bolt Plate
- (5) Plastic Retainer
- (4) M12 Flat Washers
- (4) M12 Nylon lock Nuts
- (4) M12 But Caps
- (8) M8x20 Allen Head Bolts
- (8) M8 Lock Washers
- (8) M8 Flat Washers
- (4) M6x20 Allen Head Bolts
- (4) M6 Nylon Lock Nuts
- (8) M6 Flat Washers



STEP 1 | Lay out all pieces of the carrier as shown.



STEP 2 | Use the provided M8 hardware and a 5mm Allen to loosely secure side onto the base plate.

Note: The mount is adjustable, you can set your tire or other object into the center to decide where you will mount your sides.



INSTALLATION MANUAL

STEP 3 | Once both side are set, using a 5mm Allen tool, secure the side onto base plate.



STEP 4 | Set the carrier in the desired place on the bed of the truck. Mark each of the (4) mounting holes on the raised parts of the bed.

Note: If your bed has ribs, it is recommended to mounting on top of a rib.

Check the underside of your vehicle before drilling to make sure you will not hit anything below the bed.



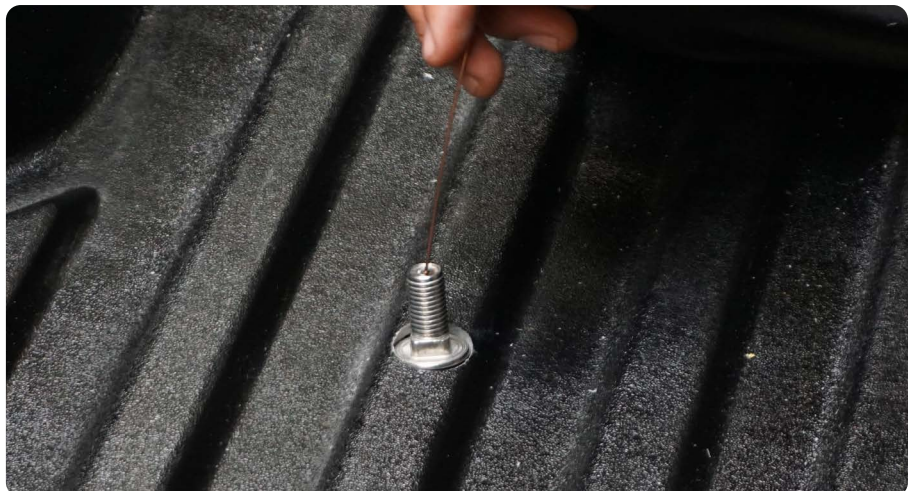
INSTALLATION MANUAL

STEP 5 | Drill a minimum 15/16" (size of the head of the carriage bolt) hole into the bed. Do not exceed 1-1/8" in diameter hole for most secure mounting.

Double check before drilling.



STEP 6 | Using the wire attached to the carriage bolt, drop the carriage bolt into the hole. Do not let go of the wire.



INSTALLATION MANUAL

STEP 7 | Take the bolt plate and drop it over the wire. Slide it down the wire and into the whole.

Angle the plate to allow it to drop inside the hole.



STEP 8 | Once the plate is in the hole align the plate and the carriage bolt.

Rotate until the plate is in line with the bed rib.



STEP 9 | Insert the plastic retaining plate and drop it down the wire. Spin plastic until bolt is secured to the bed.

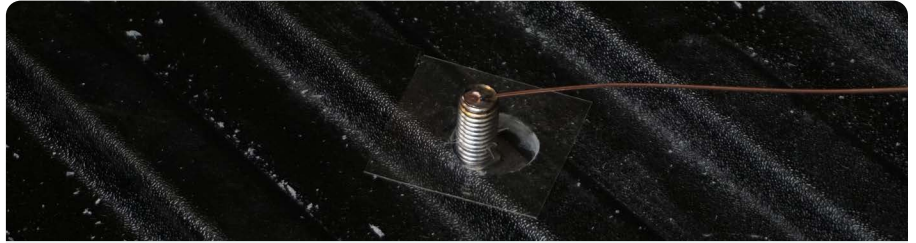
The plastic is only to secure the bolt in place until the carrier and nut is installed.



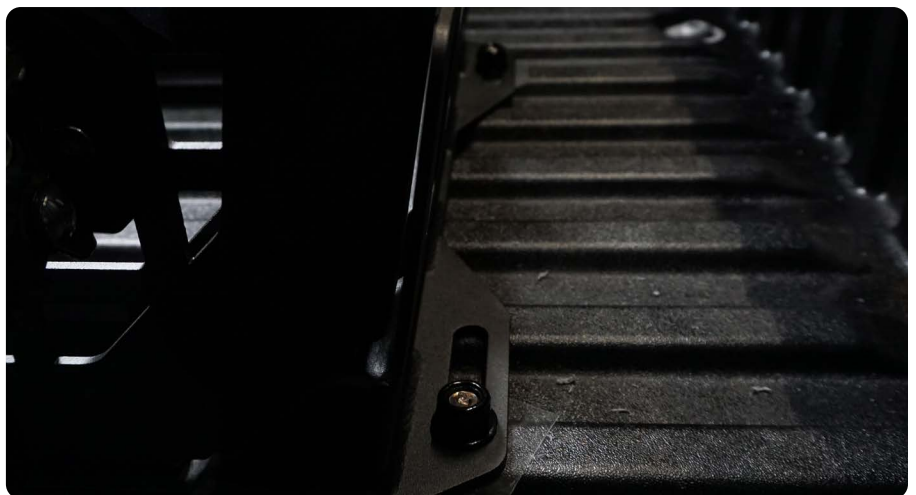
INSTALLATION MANUAL

STEP 10 | Snap the wire off by bending it at the end of the bolt or cutting it with flush cuts.

Note: You can leave the wire on until the nut is installed or remove it now.



STEP 11 | Place the carrier over the bolts. Secure the carrier in place using the provided M12 washer and nylon locking nut using a 19mm socket.





STEP 13 | Once all the nuts are hand tight place the nut caps to cover the bolts. Push the caps down onto the bolt.



STEP 12 | If running the provided Rotopax mount, install the mount onto provided bracket using the hardware provided with the Rotopax system.

Using the provided M6 hardware, install the mounting bracket with the top holes in the slot, and the bottom holes in the molle grid as shown. The hardware using a #4 Allen and 10mm wrench/socket.

Note: Rotopax can only be mounting when carrier is at full width adjustment. If sides are mounted inward, the Rotopax can hit the base plate.



INSTALLATION MANUAL

STEP 14 | To insert the optional L-track mount, press in the pin in the center of the ring and lock it into the center of the cut out.



STEP 15 | If using the provided tire strap, install the tire onto the mount. Drape the strap over the tire so that the double hook are towards the front. Clip onto the two cutouts.



INSTALLATION MANUAL

STEP 16 | Check to make sure that the front hook is orientated correctly.



STEP 17 | If the hook is face the wrong direction or needs to be changed, remove the bolt on the tie down using a 15 and 17mm wrench, flip the strap around, and reinsert and secure the bolt.



STEP 18 | Tighten the strap until tight and tire is secure and double check strap tightness after 24 hours of driving.



INSTALLATION MANUAL

STEP 19 | Congratulations, you are finish with the install of the DV8 Bed Mount.

