

WINCH POCKET FAIRLEAD

WBPF-01



TOOLS REQUIRED

- Snap Ring Pliers
- 5/16" Allen Bit
- 3/4" Wrench

SKILL LEVEL

- Novice
- 1 (you)

Little skill level required, you can easily install it by yourself.

TIME REQUIRED

- .5 Hour

Time to install this should only take about half an hour.

WARNINGS/CAUTIONS BEFORE STARTING INSTALLATION

Before you install this kit – Read and understand all instructions, warnings, cautions, and notes contained in this installation instruction guide. Consult your vehicle owner's manual for proper disconnection of electrical and lifting of vehicle if required for installation of this product.

This install may require some technical skills and knowledge of basic mechanical work. If you do not feel that you are capable of performing this install please take this product to a trained professional.

After reading this guide please contact us with any questions or concerns before installing product.
Customer Service: 855-680-9595

DV8 Offroad is not responsible for any bodily injury or harm to you or your vehicle as a result of an improper install.

Proper installation of this kit required knowledge of the factory recommended procedures for removal and installation of original equipment components. We recommend that the factory shop manual and any special tools needed to service your vehicle be on hand during the installation. Installation of this kit without proper knowledge of the factory recommended procedures may affect the performance of these components and the safety of the vehicle

- Always wear eye protection when operating power tools

Inspect all contents of this package to make sure product is not damaged and all installation hardware has been included. If parts are missing from kit, please be prepared to provide the following information

1. Name of purchase location
2. Bar Code on side of box
3. Date above bar code
4. Date inside box cover



INSTALLATION MANUAL

Begin by unpacking all items and inspecting for missing pieces or damage. If you have any concerns, please contact the company the product was purchased from. Extra hardware may be included with the product.

HARDWARE INCLUDED

- (2) 1/2"x1.5"
- (2) 1/2" Nylon Lock Nuts
- (2) 1/2" Flat Washer



STEP 1 | Pull the winch line through the fairlead and secure the fairlead to the bumper using the provided 1/2" hardware with a 5/16" allen bit and 3/4" wrench.



INSTALLATION MANUAL

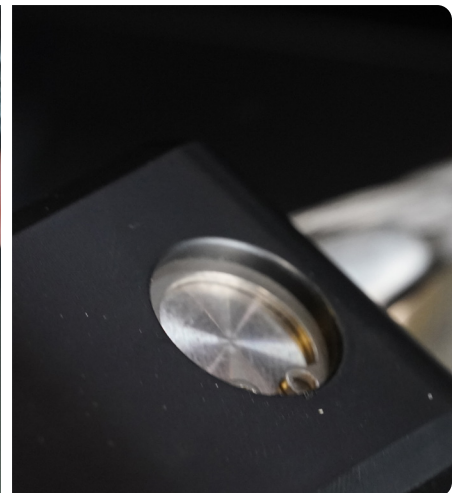
STEP 2 | Use snap ring pliers to remove the snap ring to release the pin.

Tip: Due to the tension on the snap ring, it is very easy to lose it during removal. Be careful when removing, not to let it off the pliers until you are ready.



STEP 3 | Slide the pin back into place through the winch line and re-secure the pin using the snap ring and snap ring pliers.

Ensure snap ring is set into groove fully on hook.



INSTALLATION MANUAL

STEP 4 | Use the winch remote to spool in the winch line and seat the hook.



STEP 5 | Congrats! You are finished with the install of the DVS Winch Pocket Fairlead.

